



**GLENCOE PARK DISTRICT  
SPECIAL PROJECTS AND FACILITIES MEETING  
Thursday, April 6, 2017 - 6:30 p.m.  
Takiff Center**

Consistent with the requirements of the Illinois Compiled Statutes 5 ILCS 120/1 through 120/6 (Open Meetings Act), notices of this meeting were posted.  
Meeting Location: Takiff Center, 999 Green Bay Road, Glencoe, IL 60022

**AGENDA**

- I. Call to Order
- II. Roll Call
- III. Matters from the Public
- IV. Review of Designs of Lakefront Park
- V. Public Input on Designs
- VI. Discussion on Jefferson and Vernon Playground
- VII. Other Business
- VIII. Adjournment

The Glencoe Park District is subject to the requirements of the Americans with Disabilities Act of 1990. Individuals with disabilities who plan to attend this meeting and who require certain accommodations in order to allow them to observe and/or participate in this meeting, or who have questions regarding the accessibility of the meeting or facilities, are asked to contact the Park District at 847-835-3030.  
Executive Director Email: [lsheppard@glencoeParkDistrict.com](mailto:lsheppard@glencoeParkDistrict.com)



# LAKEFRONT PARK

April 6<sup>th</sup>, 2017



# March 2<sup>nd</sup> Meeting

- Looked at History of the Park
- Local/Regional
- Brief Analysis of the Park and Existing Conditions
- Potential Projects that Should/Must Take Place

Most Important: We listened to Your Ideas  
You had many and you Stated that:  
The Park was for “All of Glencoe”





# However this was what you asked us to Examine

---

Multi-Use Tennis/Pickle Ball Two Courts (2)

Removal and replanning park with 1 Tennis Court removed

Fitness Components (Not large enough to create regional draw)

Potential of small natural looking fitness elements a possibility

Playground Concepts

- Dedicated Traditional 2-5 with swing similar size and scope to what's there

- Natural Material Concepts (Something Different than Discovery Area)

Drainage Improvements

Park Entry Concepts (How do we invite people in at the corners?)

Use Glencoe Limestone?

Interpretive Signage/Elements

- Stone Stepper Pathway like Mills with history of Glencoe etc?

- Signage Describing Plantings/Birds/Lakefront Ecosystem

Interior Park Pathways/Bluff Pathway

ADA Accessible Pathway

Concrete - Alternate Materials that are maintainable 365 and ADA Compliant?

Park Benches & Swing Benches

Curved Exterior Pathways to replace straight sidewalks

Bike Racks, Drinking Fountain (relocation?)

Donor Paver Area/Plaza Natural Plantings (Be Conservative)

Lakefront Deck

Examine potential opening up of spaces for tree quality

# Tonight

- **The Landscape Aesthetic of Lakefront Park**  
Uncovering and enhancing the “Spirit of Place”
- **Historic Importance of the Park (again)**
- **Barriers in the Landscape**
- **Proposals: From the ideal to moderate intervention**
- **Drainage**
- **A look at Potential Materials**
- **Potential Costs**

# Before Making an Intervention in Lakefront Park

---

## The Landscape Aesthetic of Lakefront Park



## Lakefront Park: Naturalesque Tradition/English Landscape Style





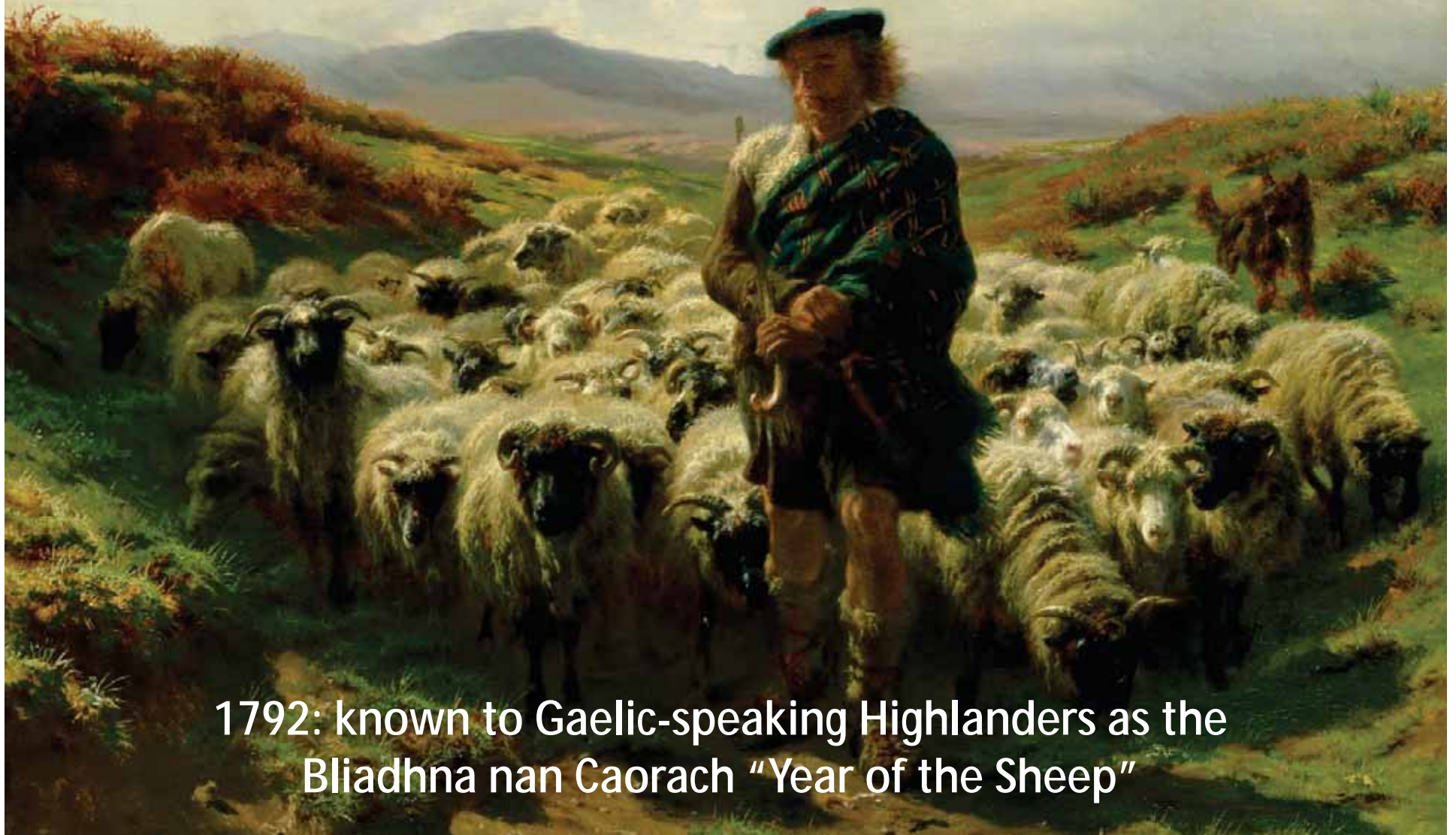
# Lakefront Park: Naturalesque Tradition

Beautiful but completely artificial. Agricultural progression was Woodland to Farmland with Hedgerows and Trees



## Lakefront Park: Naturalesque Tradition

Clearing the land: Gaelic: Fuadach nan Gàidheal, the “Eviction of the Gael”, 18th /19th Centuries



1792: known to Gaelic-speaking Highlanders as the Bliadhna nan Caorach “Year of the Sheep”



# Lakefront Park: Naturalistic Tradition



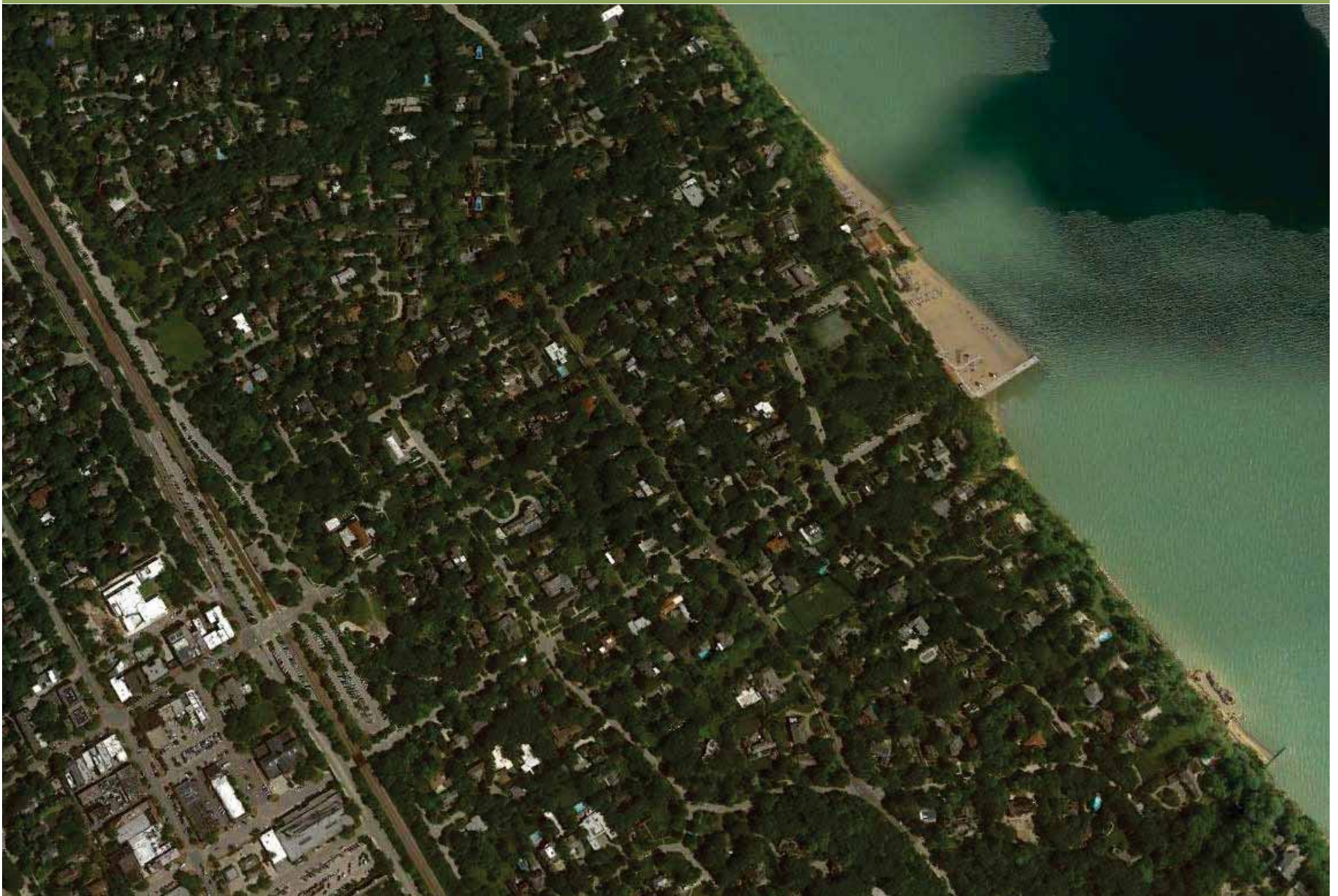
Sheep eat saplings, shrubs & grass to the nub leaving only larger mature trees & few hedgerows

# Capability Brown turned it into an Exquisite Aesthetic





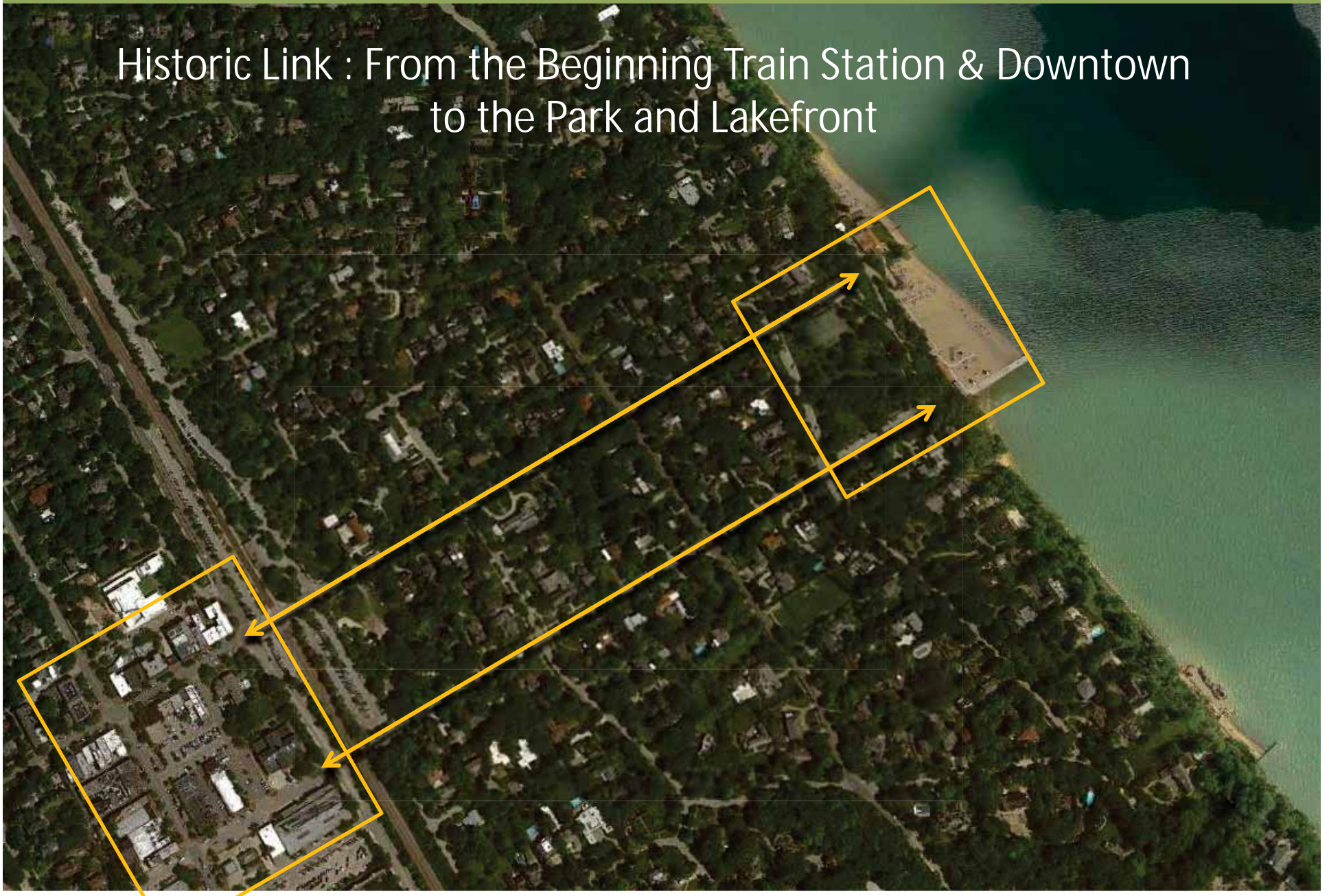
# Lakefront Park: Importance of the Park





## Lakefront Park: Dedicated in 1867

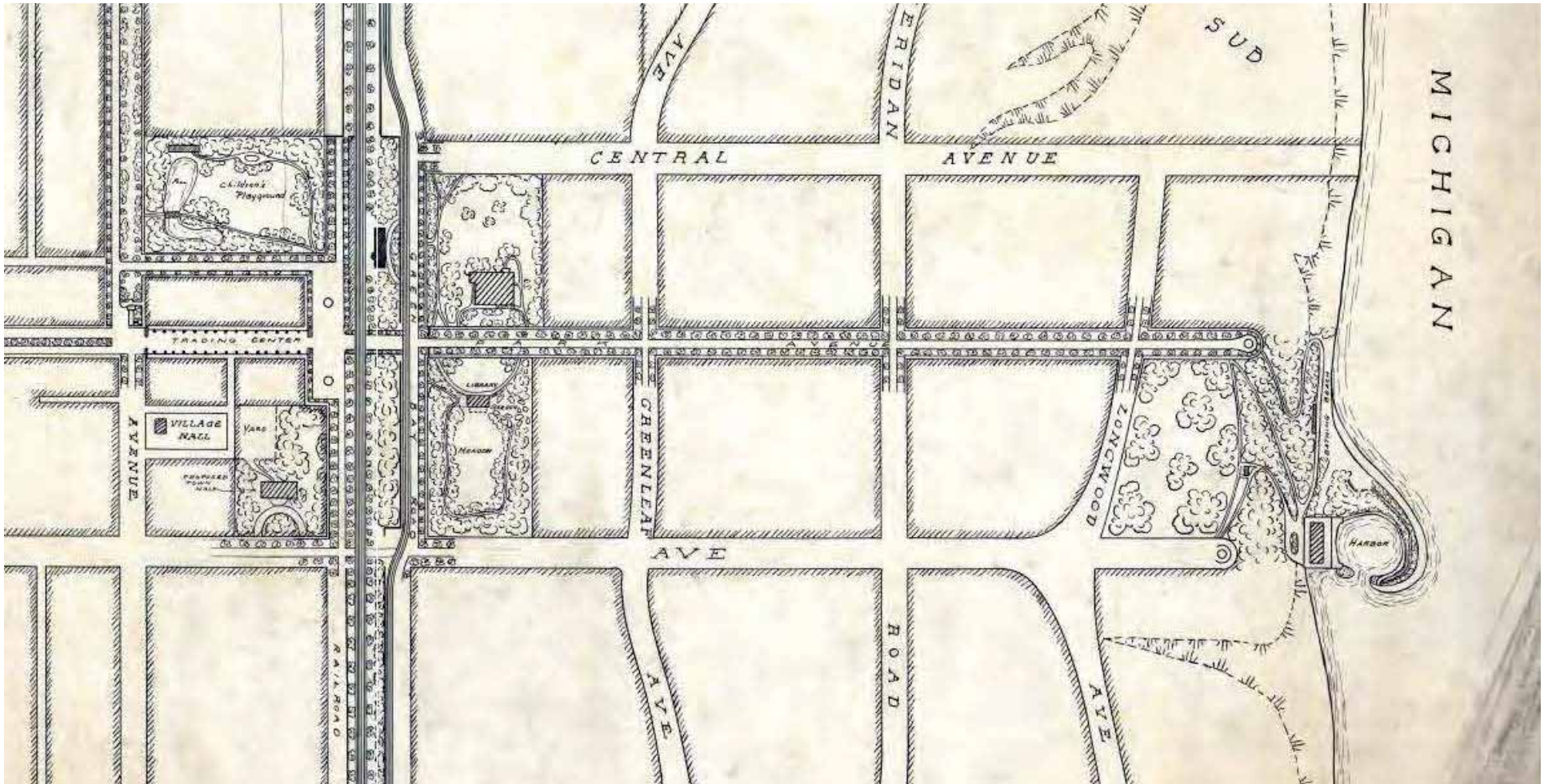
Historic Link : From the Beginning Train Station & Downtown  
to the Park and Lakefront





# Lakefront Park: Importance of the Park

Frank Lloyd Wright and Jens Jensen worked together in Glencoe



Jens Jensen 1912



The Arrival on Park is Compromised so we are showing Hazel



View from Hazel



# Lakefront Park: Importance of the Park



Pre-Settlement Oaks



## Lakefront Park: Importance of the Park





## Lakefront Park: Importance of the Park



# Glencoe's Sesquicentennial (150<sup>th</sup> birthday) in 2019

---



**Feb. 22, 1940: Glencoe Park District workmen relocate a 60-foot elm tree from a school yard to its new home at Central School**



# Lakefront Park: Conflict of Styles





# Lakefront Park: Conflict of Styles



## Lakefront Park: Barriers in the Park

---

“A good park should allow you to both see and walk through it. In many new parks, I feel like a victim of planning, forced to navigate an obstacle course just to get through”.

Peter Kantz, Congress for the New Urbanism (CNU)



## Lakefront Park: Barriers in the Park



“forced to navigate an obstacle course just to get through”

## Lakefront Park: Barriers in the Park



“forced to navigate an obstacle course just to get through”



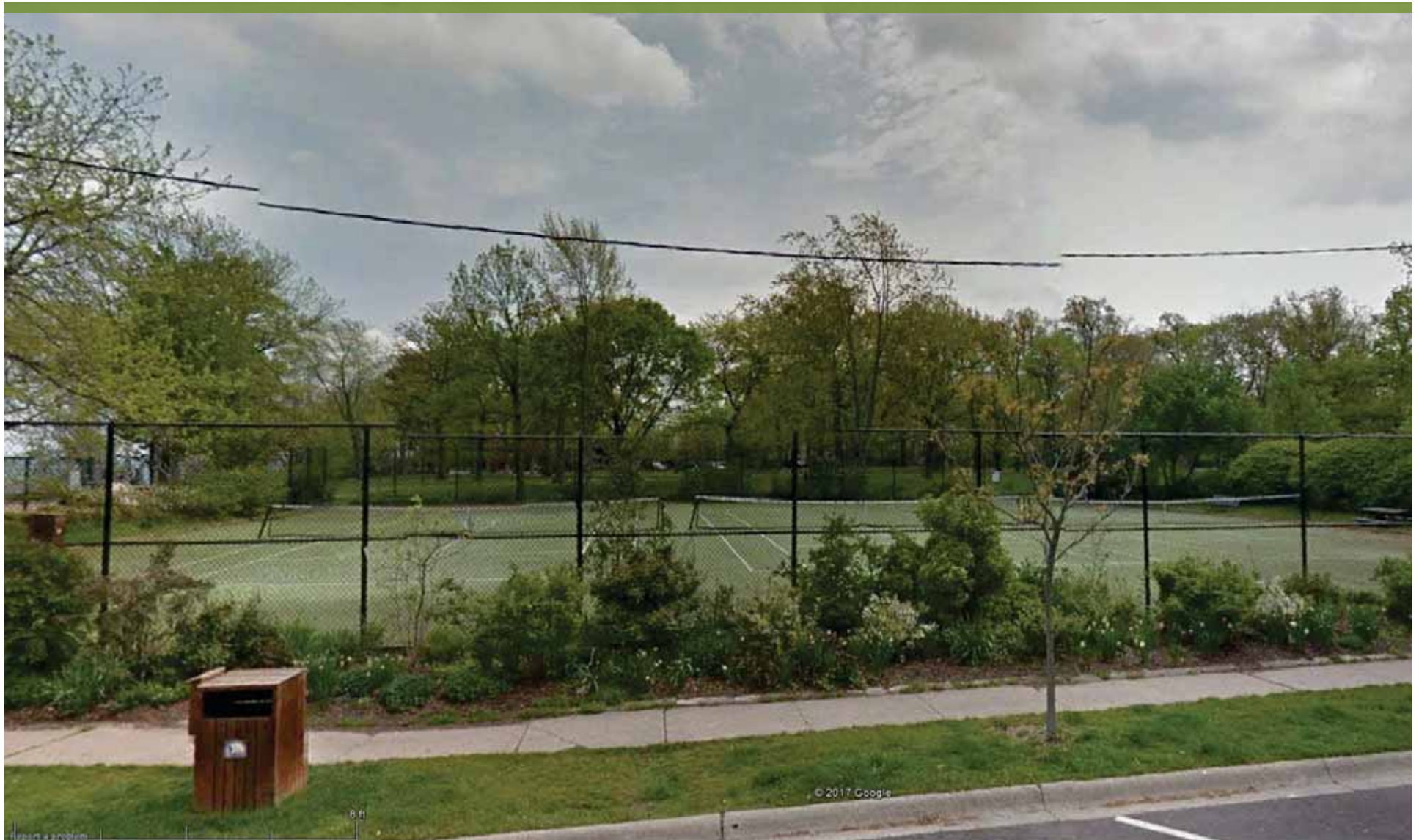
## Lakefront Park: Barriers in the Park



“forced to navigate an obstacle course just to get through”



# Lakefront Park: Barriers in the Park



# Lakefront Park: Barriers in the Park



The Park is Part of Glencoe History and Pre-settlement



# Public Tennis Courts National Parks & Recreation Association

---

The National Recreation and Park Association (NRPA)  
Recommends 1 tennis court per 2,000 people

Glencoe Population 8,900 in 2014 equals 4.45 tennis courts

There are 11 Park District tennis courts in Glencoe  
More than double the recommended number



# Public Tennis Courts Nationally Trust for Public Land

---

Tennis Courts per  
10,000 Residents

Tennis Courts per  
1,000 Residents

Minneapolis	4.5	.45
Omaha	4.4	.44
Greensboro	4.0	.4
Atlanta	3.9	.39
Boise	3.8	.38
Madison	3.8	.38
Virginia Beach	3.6	.36

Glencoe 1.27 per 1000 Residents





# Lakefront Park: Majority of Barriers





# "Rain-spotting" of Trees - Potential to Open Up Spaces





---

# THE IDEAL

# Today





# New Entryways, Curvilinear Paths, 0 Tennis Courts, Opening Up Spaces





# Lakefront Park: ADA Compliant Path



“Shouldn’t there be some access so we can experience the trees?”



# Lakefront Park: ADA Path





# Instead of the Courts: Kids love Mounds





# Lightweight block for Mounds



# Lakefront Park: Mounds very Low and Slightly Shaped



Events in the landscape





---

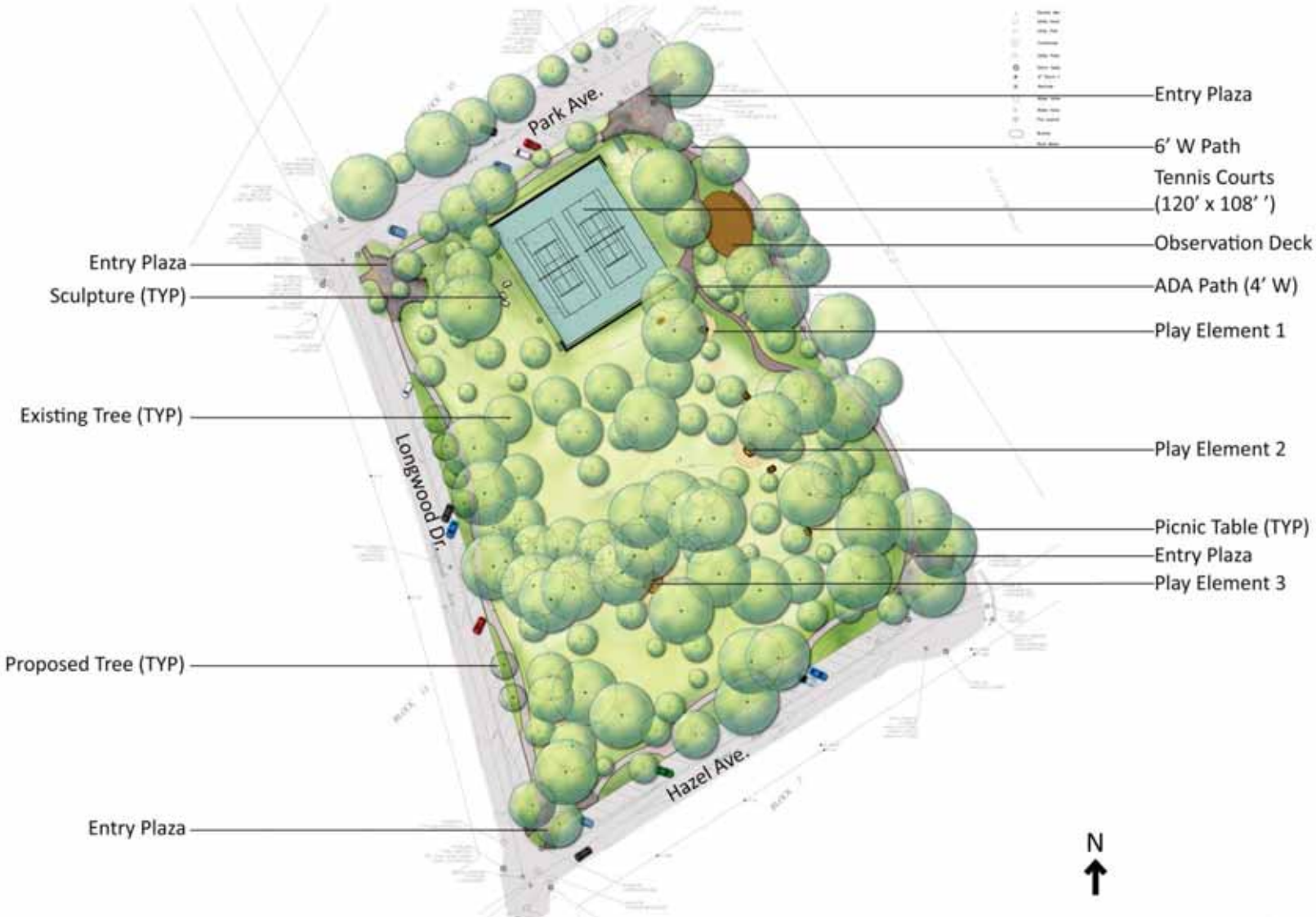
# More Moderate Intervention

# New Entryways, Curvilinear Paths, 2 Tennis Courts, Opening Up Spaces

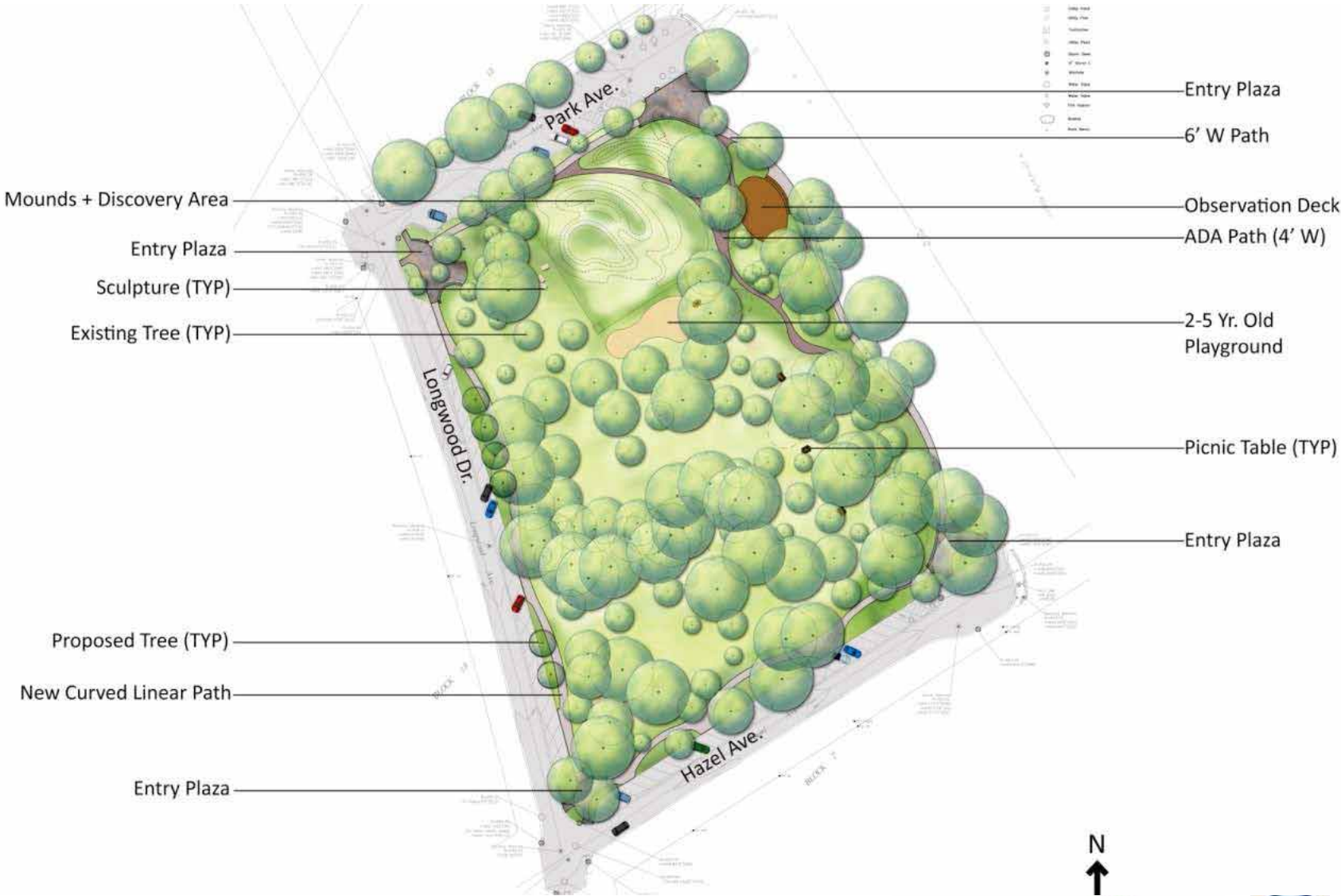




# Lakefront Park: Conceptual Plan A



# Lakefront Park: Conceptual Plan B



Mounds + Discovery Area

Entry Plaza

Sculpture (TYP)

Existing Tree (TYP)

Proposed Tree (TYP)

New Curved Linear Path

Entry Plaza

Entry Plaza

6' W Path

Observation Deck

ADA Path (4' W)

2-5 Yr. Old  
Playground

Picnic Table (TYP)

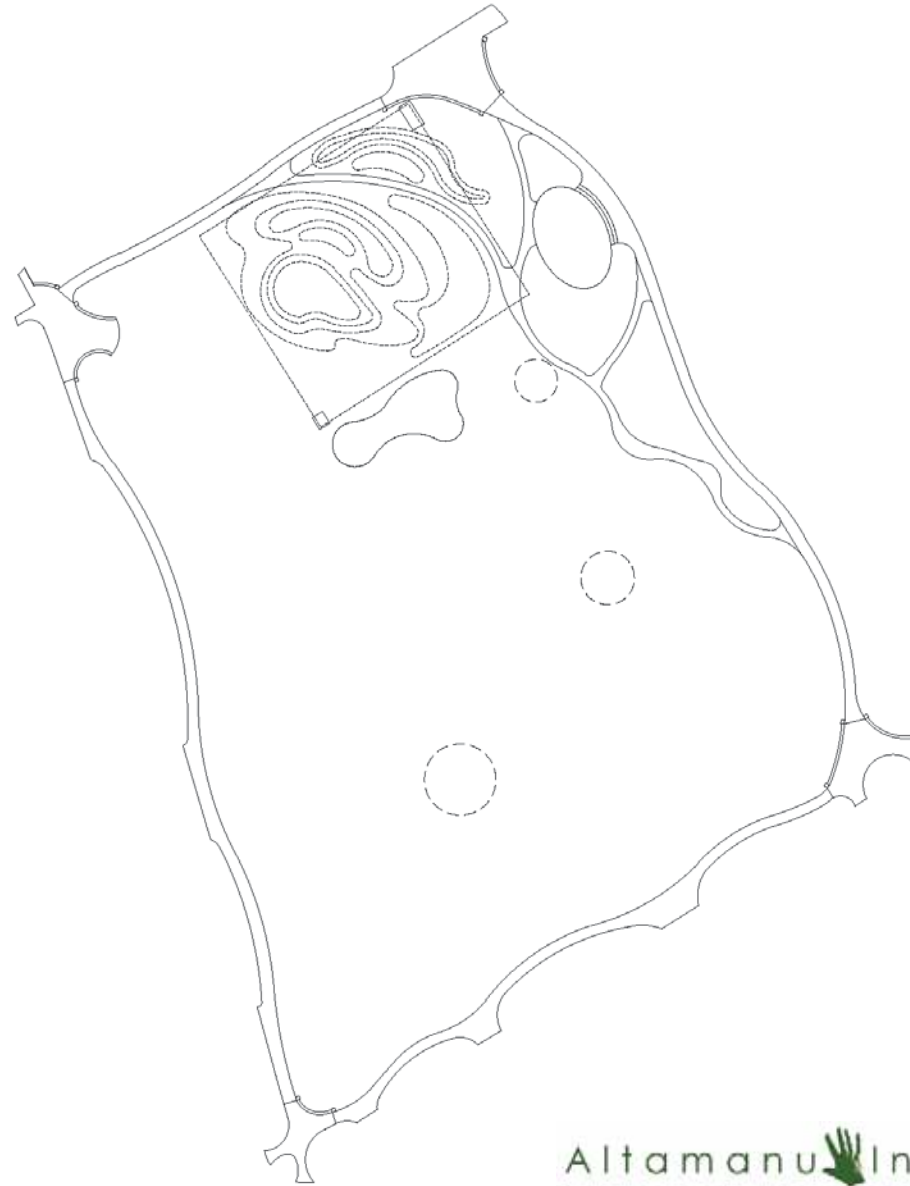
Entry Plaza



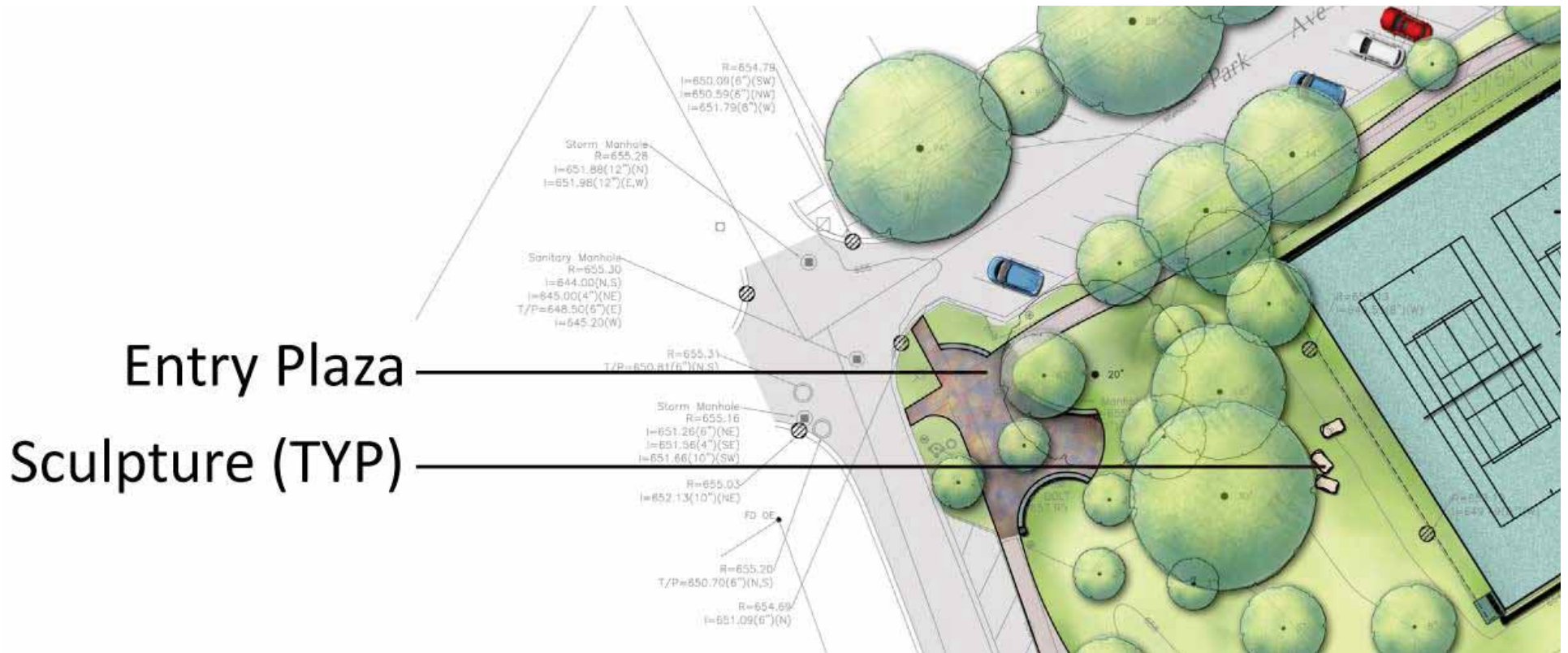


# Lakefront Park: Pathway System

---



# Lakefront Park: Tour of the Proposal North Side



Entry Plaza

Sculpture (TYP)



# Lakefront Park: Importance of Entryways



“OPEN ARMS AND ALSO A PLACE”

Altamanu  Inc.  
landscape architecture + urban design + planning

SMP GROUP  
Design Associates, LLC





# Lakefront Park: Importance of Entryways





# Open Arms of Welcome, Compression, Destination in View



Altamanu Inc.   
landscape architecture + urban design + planning

SMP GROUP  
Design Associates, LLC





# Open Arms of Welcome, Compression, Destination in View





# Lakefront Park: North West Entry Existing





# Lakefront Park: North West Entryway Scheme 1





# Lakefront Park: Donation Opportunities



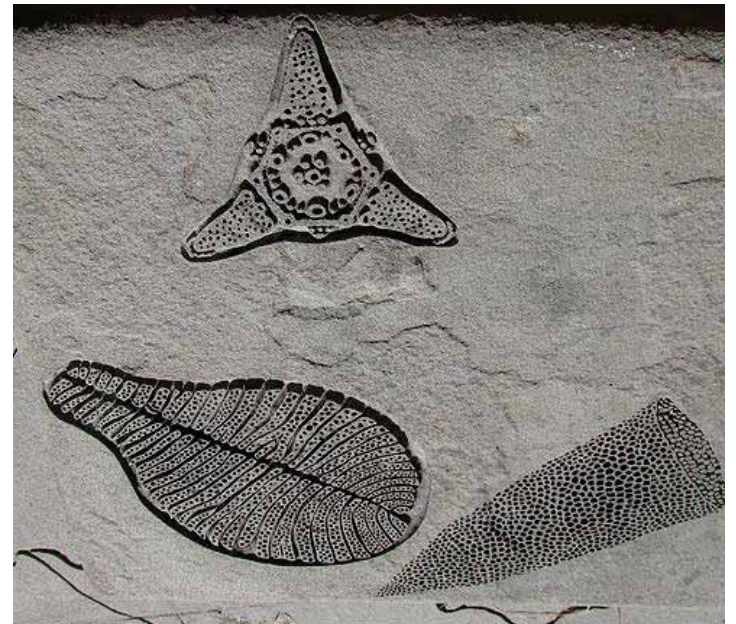
# Donor Opportunities in each Entry Plaza



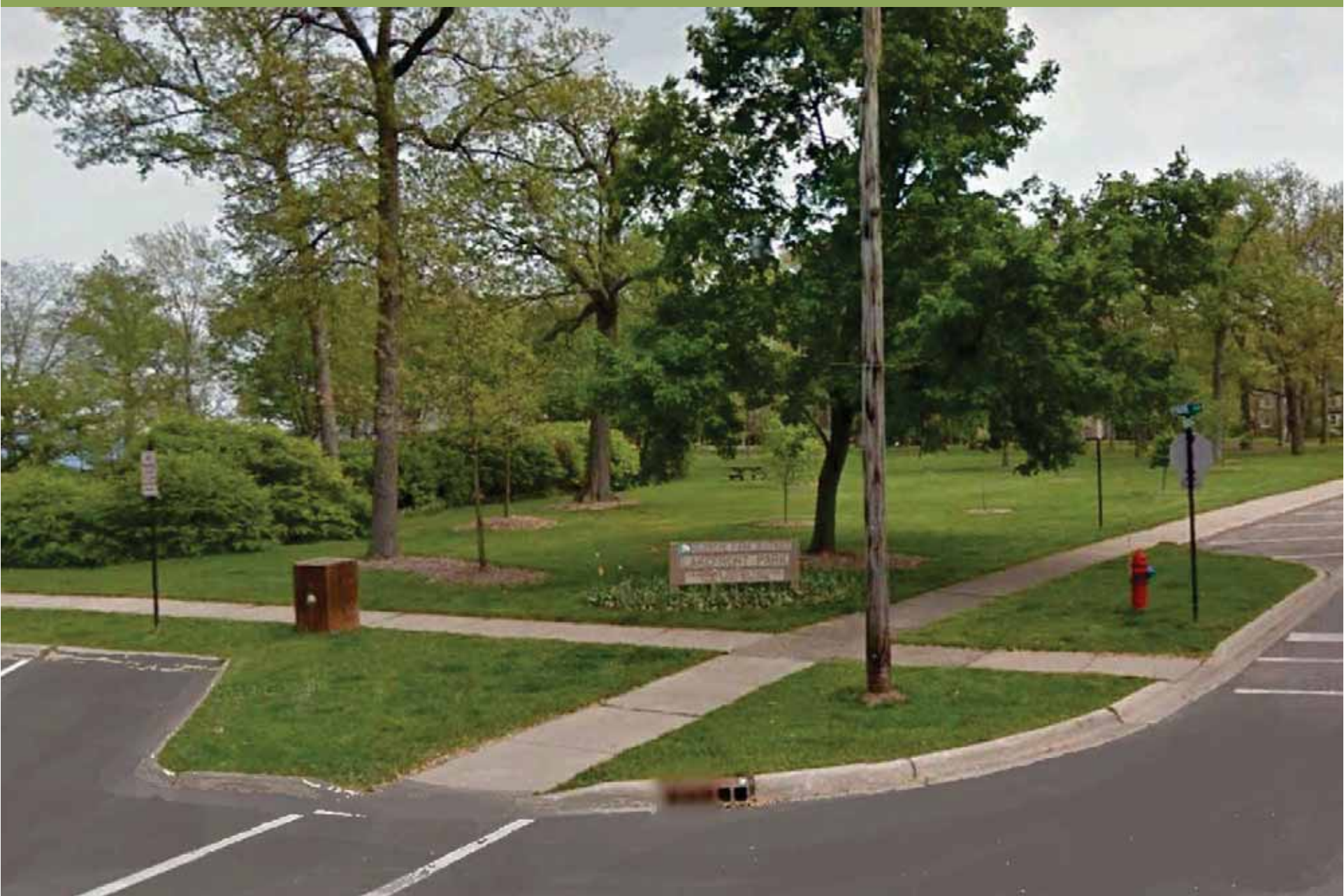


# Lakefront Park: Donor Opportunity

---



# Lakefront Park: North West Entryway Existing





## Lakefront Park: North West Entryway Scheme 2



# Lakefront Park: North West Entryway



Scheme 1



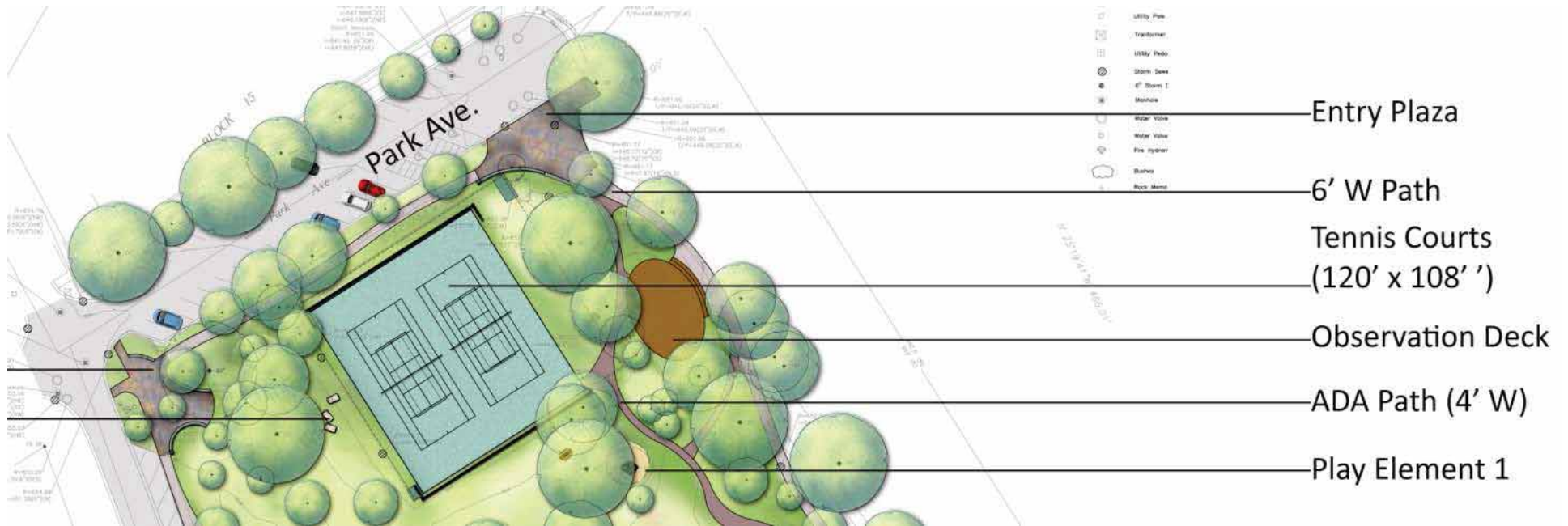
Scheme 2



## Lakefront Park: North Side Existing



# Lakefront Park: North Side Conceptual Plan A





# Lakefront Park: North East Entry



## Lakefront Park: North East Entry



“forced to navigate an obstacle course just to get through”



# Lakefront Park: North East Entry



Open Arms and a Place

# Lakefront Park: North East Entry





# Lakefront Park: Sign and Plaque



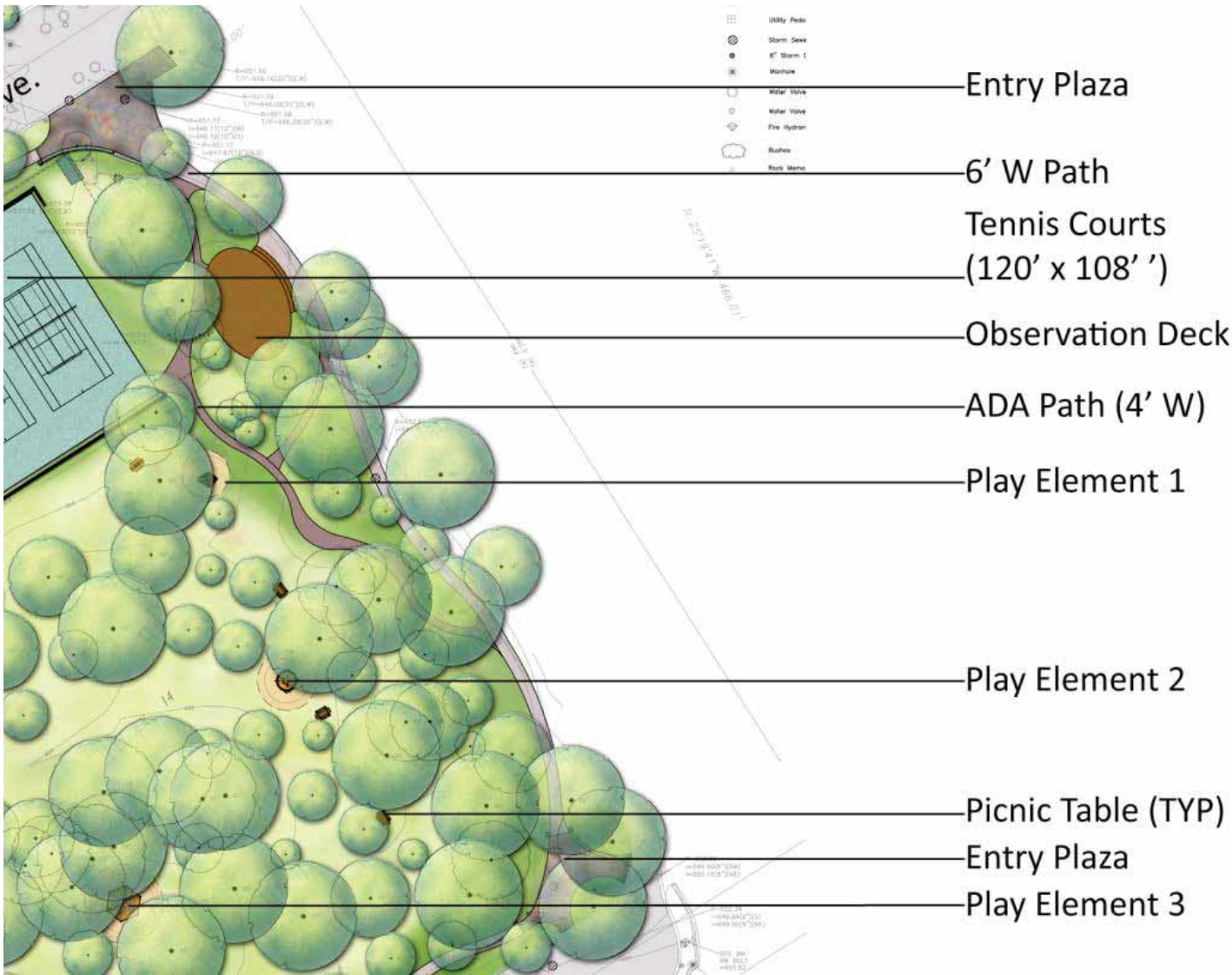


# Lakefront Park: North East Entry





# Lakefront Park: East Side Lakefront Path



## Lakefront Park: Pull Path Back from Edge





# Lakefront Park: Deck Composite Material and Stone Edge

---





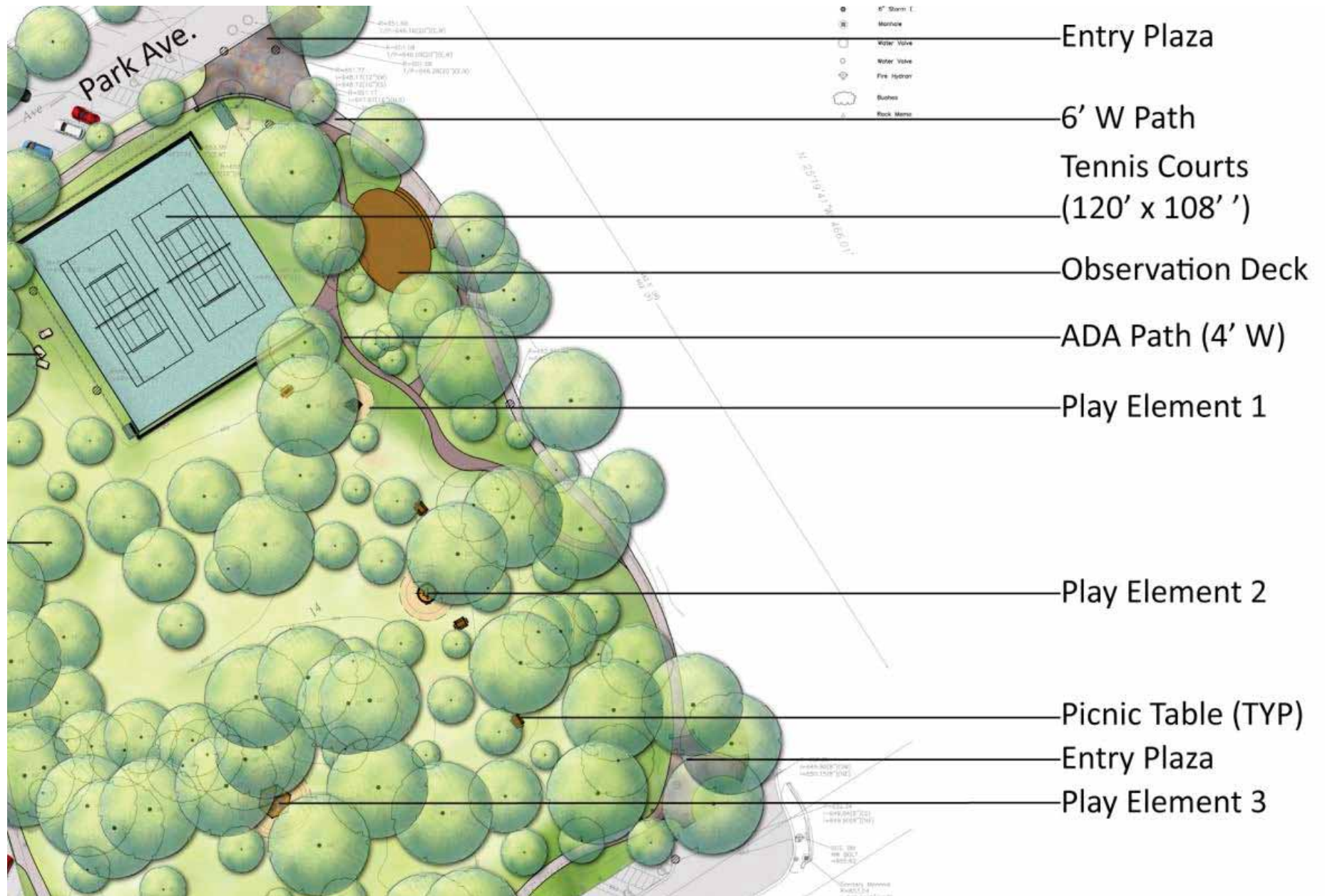
## Lakefront Park: Mini Decks

---





# Lakefront Park: Play Elements in the Landscape

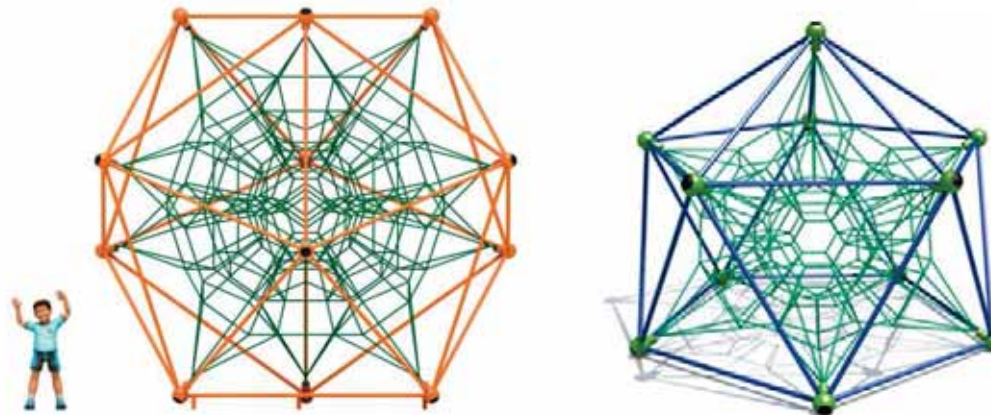


# Lakefront Park: Play Elements





# Lakefront Park: Sculptural Play Elements in the Landscape



LARGE PLAYWEB (PLAYWORLD)

Altamanu Inc.   
landscape architecture + urban design + planning

SMP GROUP  
Design Associates, LLC

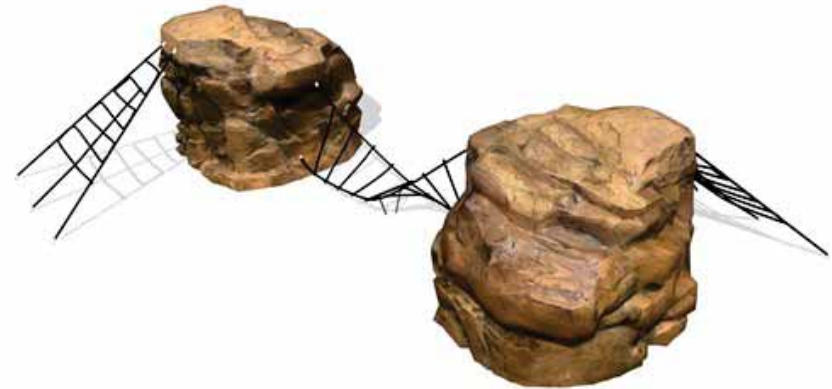


# Lakefront Park: Sculptural Play Elements in the Landscape





# Lakefront Park: Play (Nature Based)



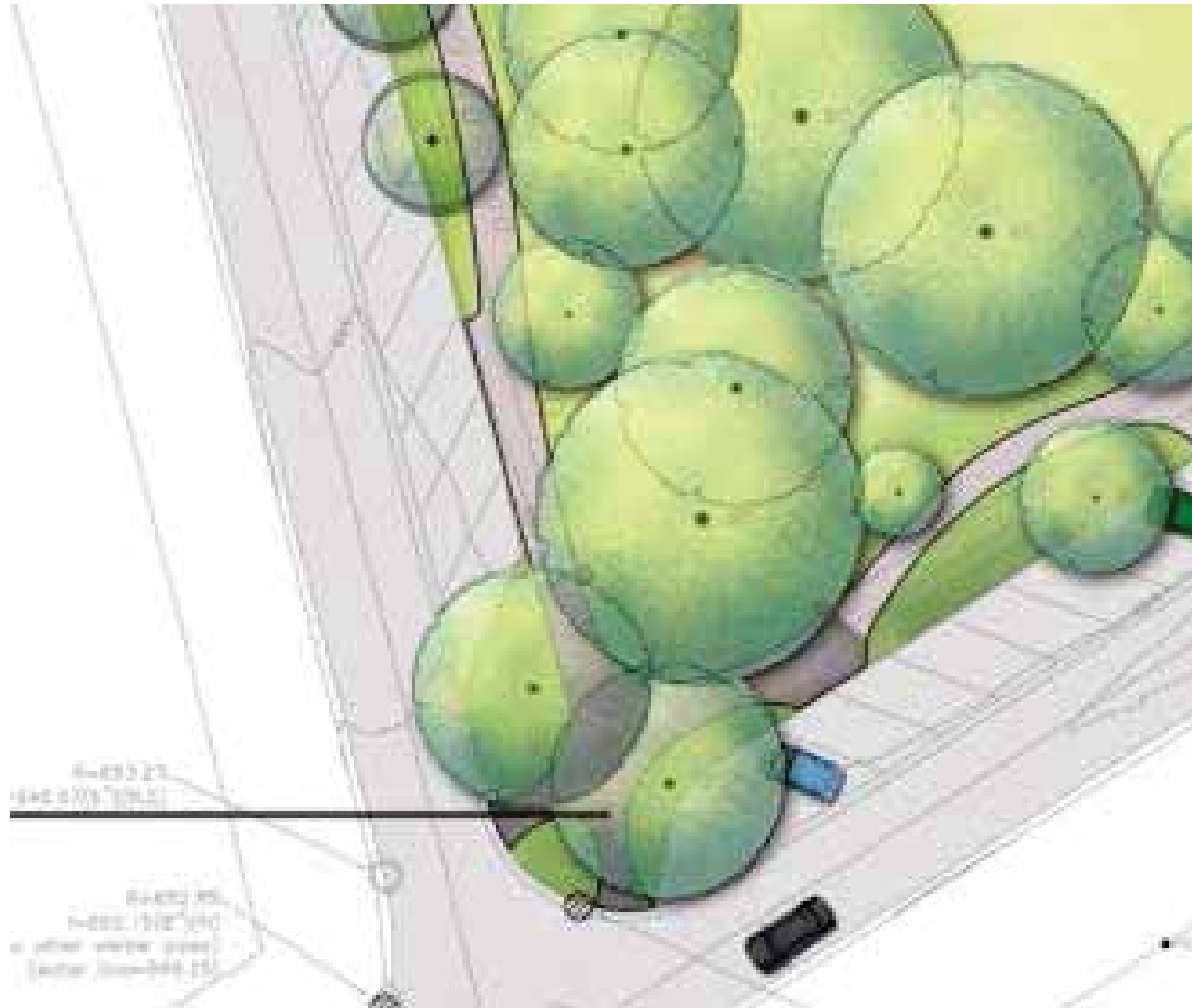
# Lakefront Park: Or more regular Playground 2 - 5

---





# Lakefront Park: South West Entry



# Lakefront Park: South West Entry





# Lakefront Park: South West Entry





# Lakefront Park: South West Entry

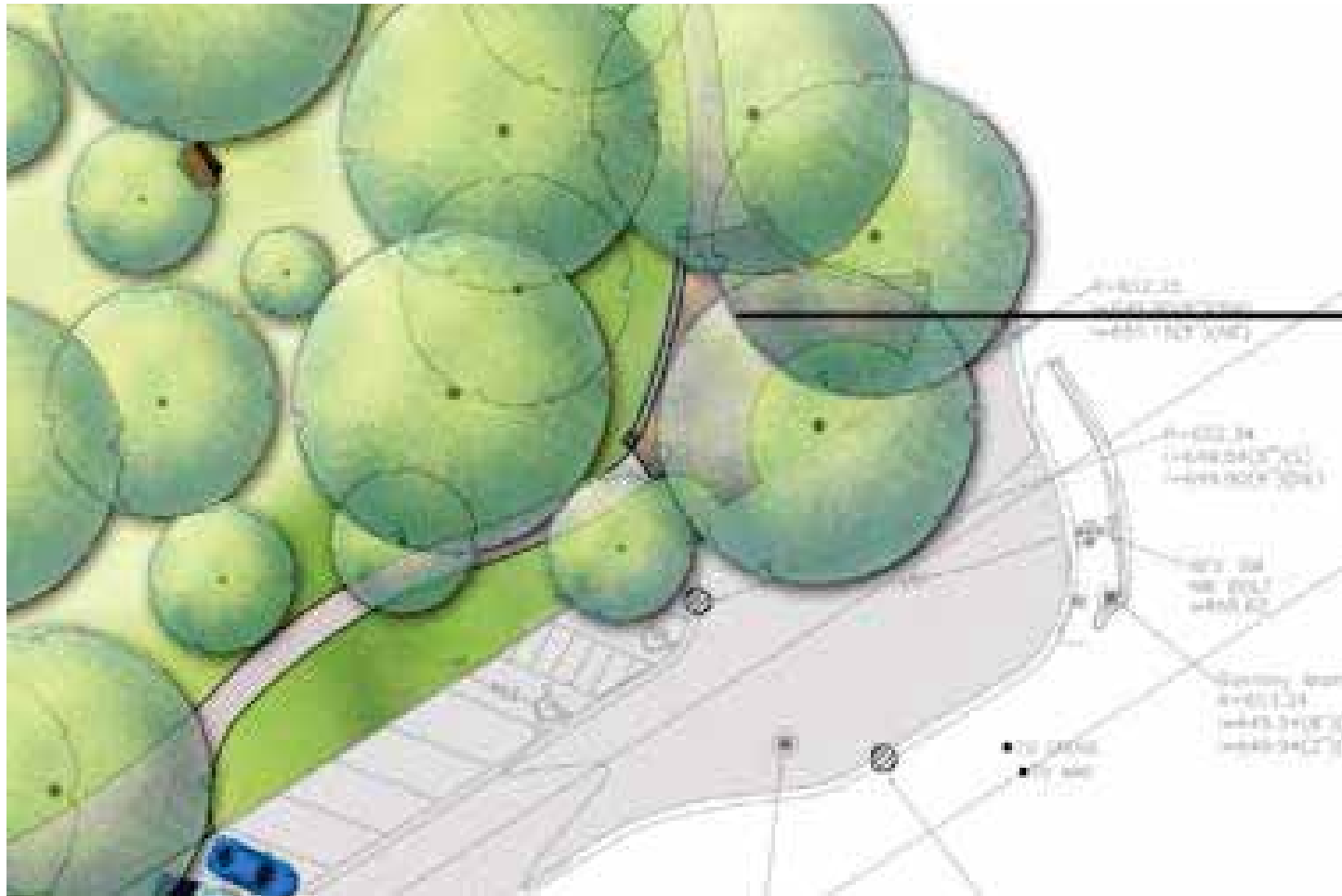




# Lakefront Park: South West Entry



# Lakefront Park: South East Entry





# Lakefront Park: South East Entry

---



Water Flows Across Paths in Park and Along Hazel Ave

# Lakefront Park: South East Entry





# Lakefront Park: South East Entry

Deal with drainage, make a pleasing entry/exit to the path system and make a "Place"





# Lakefront Park: South East Entryway



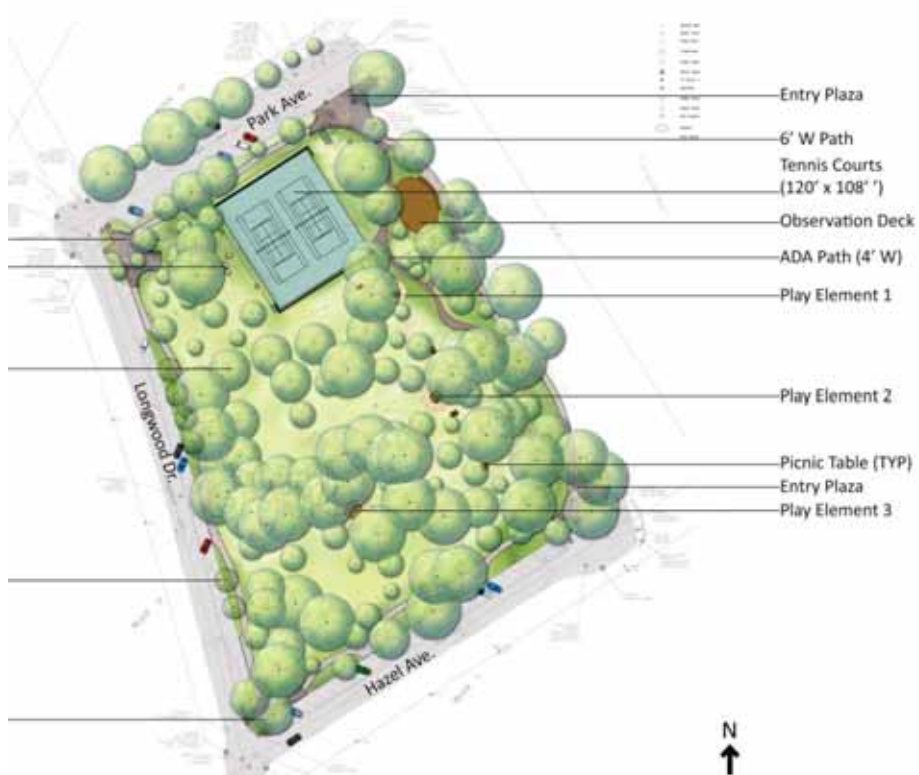


# Lakefront Park: South East Entryway





# Lakefront Park: Conceptual Plans A & B



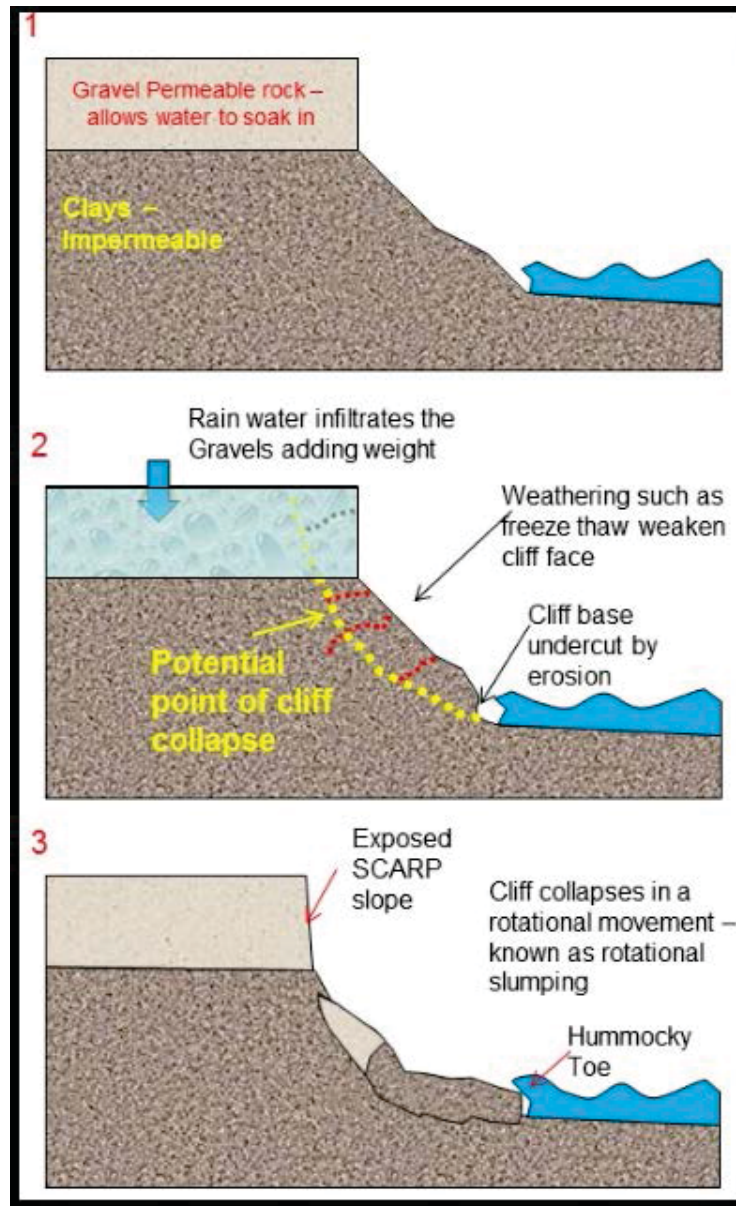


# Lakefront Park: Drainage

---



# Lakefront Park: Drainage





# Lakefront Park: Engineering Recommendation

---

- Reinforce the toe of the bluff and to add wick-drains
- Wick-drains carry water from the top directly to the bottom
- Relieve water pressure acting on the face of the bluff
- Reinforce the toe of the bluff to stop the bluff from sliding
- Improve existing storm sewers; help carry water away from the bluff
- Limit infiltration.

## Lakefront Park: Interpretive Signage

---





# Lakefront Park: Interpretive Signage





## Lakefront Park: Winter Color and Form

---





## Lakefront Park: Butterfly Station



# Lakefront Park: Pathway Materials

---





# Lakefront Park: Pathway Materials

## ROMPOX® - PROFI-DEKO



The professional grit and gravel hardener

2 component synthetic resin binding agent  
for washed, dried and dustfree gravel and grit (grainsize from approx. 2-10mm)<sup>1)</sup>



### PROPERTIES

- for pedestrian loads
- for joint depths from 30mm
- highly water permeable
- ideal for pathway construction and tree pits
- water resistant
- for professional use
- strengthens gravel and grit (grainsize from approx. 2-10mm)<sup>1)</sup> (not suitable for white stones)
- high strength
- can be applied from > 0°C surface temperature

Colour: transparent



CELL-TEK  
Geosynthetics

1-800-854-7622  
410-721-4544



LOAN SERIES | GRAVEL-LOK | PRODUCTS | CAD / DATA SHEETS | VISUAL | DEALERS | CONTACT | MORE

### Gravel-Lok™ Natural Pebbles

For your convenience, we also offer clean, washed pebbles for use with Gravel-Lok.

Call or e-mail for more information.  
NOTE: Natural stone color varies by lot.



PEBBLE STYLE: YORKTOWN  
SIZE: 3/8" or 3/4" P.E.A.  
GRAVEL-LOK CLEARBOND



PEBBLE STYLE: ROCKLEDGE  
SIZE: 1/8" or 3/8" REVERSE-JACK  
GRAVEL-LOK CLEARBOND

# Lakefront Park





