



**GLENCOE PARK DISTRICT
SPECIAL PROJECTS AND FACILITIES MEETING
Tuesday, March 7, 2017 - 6:30 p.m.
Takiff Center**

Consistent with the requirements of the Illinois Compiled Statutes 5 ILCS 120/1 through 120/6 (Open Meetings Act), notices of this meeting were posted.
Meeting Location: Takiff Center, 999 Green Bay Road, Glencoe, IL 60022

AGENDA

- I. Call to Order
- II. Roll Call
- III. Matters from the Public
- IV. Discussion on Lakefront Park
- V. Discussion on Takiff Parking Lots
- VI. Other Business
- VII. Adjournment

The Glencoe Park District is subject to the requirements of the Americans with Disabilities Act of 1990. Individuals with disabilities who plan to attend this meeting and who require certain accommodations in order to allow them to observe and/or participate in this meeting, or who have questions regarding the accessibility of the meeting or facilities, are asked to contact the Park District at 847-835-3030.
Executive Director Email: lsheppard@glencoeParkDistrict.com

IV. Discussion on Lakefront Park

V. Discussion on Takiff Parking Lot

**Possible documents will be shared
at the Committee meeting.**

Glencoe Park District

March 7, 2017

Special Projects and Facilities Committee Meeting



LAKEFRONT PARK

March 2nd 2017





Delighted to be Here!!!

Tonight

- Start with: Who We Are?
- A Little History
- Brief Analysis of the Park and Existing Conditions
- Potential Projects that Should/Must Take Place
- Discussion

Most Important: Here to Listen to Your Ideas

Altamanu: Who are we?

Altamanu

Josephine Bell ALTA and John Mac MANUs

Planning, Urban Design, Landscape Architecture, Arboriculture, and Soils.



Josephine



John



Phil



Jane



Orenthal

Team for Glencoe

Who are we?



Jerry M. Pilipowicz
Principal & Managing Member

Education:

B.Sc. Civil Engineering, University of Manitoba, WPG, MB, CAN
B. Env. Design, Architecture, University of Manitoba, WPG, MB, CAN

Licenses/Certifications:

Professional Engineer, IL
Professional Engineer, OH
Professional Engineer, MD



SMP GROUP

Engineering and Storm Water Management

- Experienced in park design
- Creative and Accomplished at community outreach
- Worked together on multiple park projects

Origins

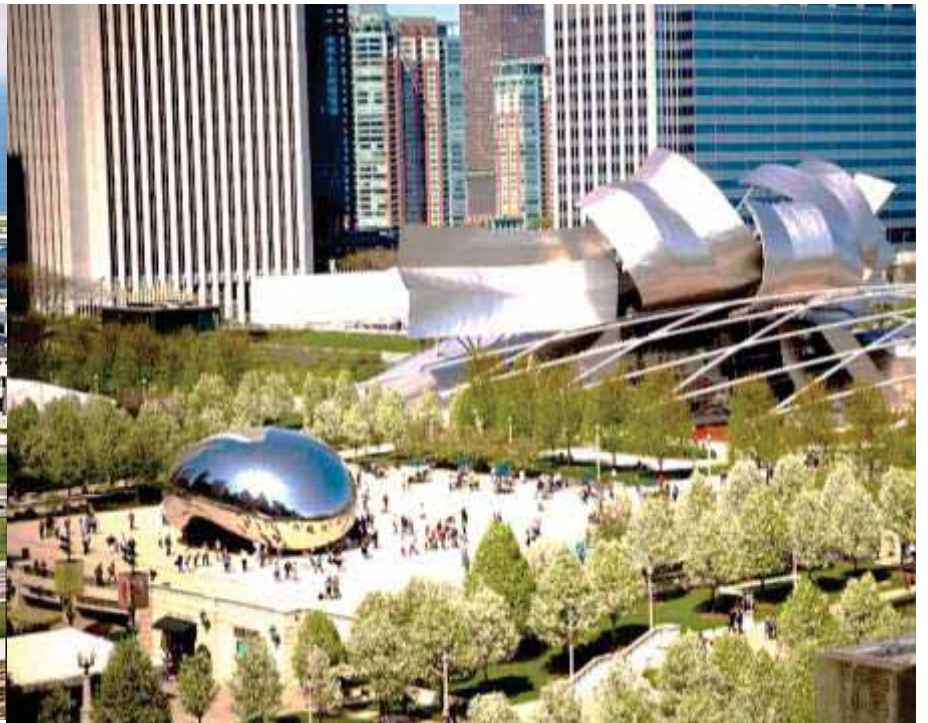


London and Santiago Chile



Ireland

Altamanu: All types of Public Open Space, Historic to Contemporary



Performance Spaces and Destination Skate and Dog Parks



Creating Places: New Award Fulton Market Congress for New Urbanism



And Last Year Batavia River Street Woonerf/Shared Street Congress for New Urbanism



Van Vlissingen Prairie Environmental Park



135 acre Park - Restoration and Natural Play

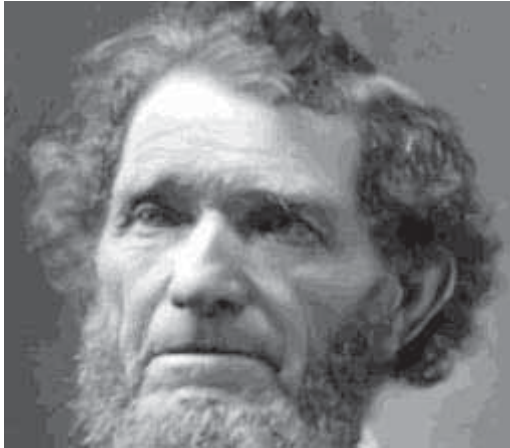
Altamanu Relevant Projects

12 Master Plans, 14 Park Projects & 4 Historic Parks in Oak Park Alone



Also streets, medians and planters for the Village

Lakefront Park Notes on History



Opinion about the origins of the village's name is divided; Some say it is named after Matthew Coe (Glen Coe); others say it is named for Glencoe of Scotland (*Gleann Comhann*)

“in 1835 a man named Anson Taylor, a carpenter from Connecticut, who traded in furs came north with his family and built a harbor into the lake”.

Development came in earnest with the arrival of Dr. Alexander Hammond who along with early founders set aside land for use as a park that was *dedicated Lakefront Park in 1867*

The Park District was established in 1912

The approaches and beach house were built in 1928 under the supervision of Paul Battey.

A two million gallon underground reservoir was added in 1961



Lakefront Park Notes on History



The original Reservoir project had a green asphalt top for tennis courts.

Tennis Courts redone in 1970's

The Artificial Turf to be seen today is the 2nd such covering

It cost \$4,000 to clean in 2012

Lakefront Park Previous Plans

A plan from 1997

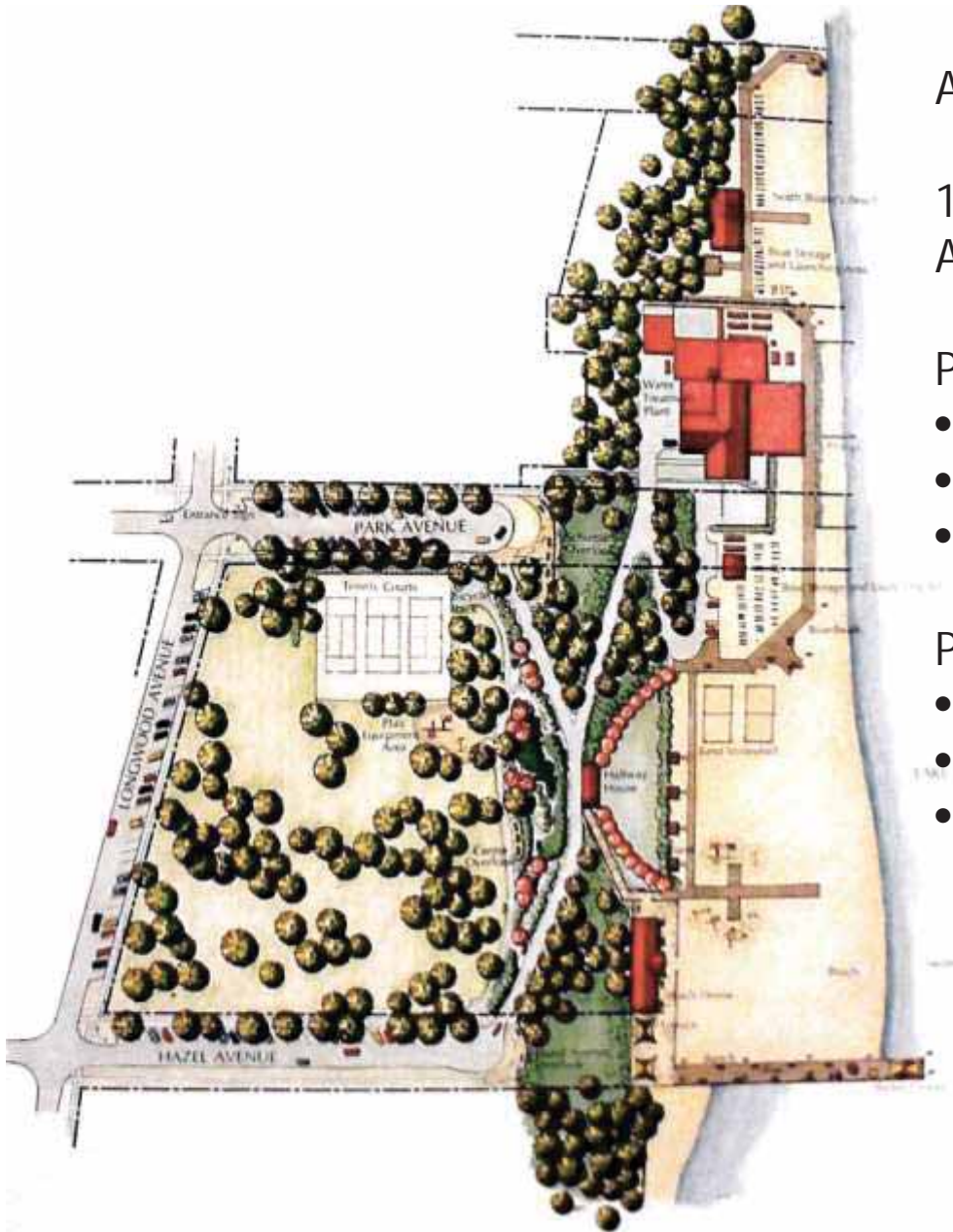
1st phase earned an Open Space Land Acquisition & Development Grant.

Phase 1

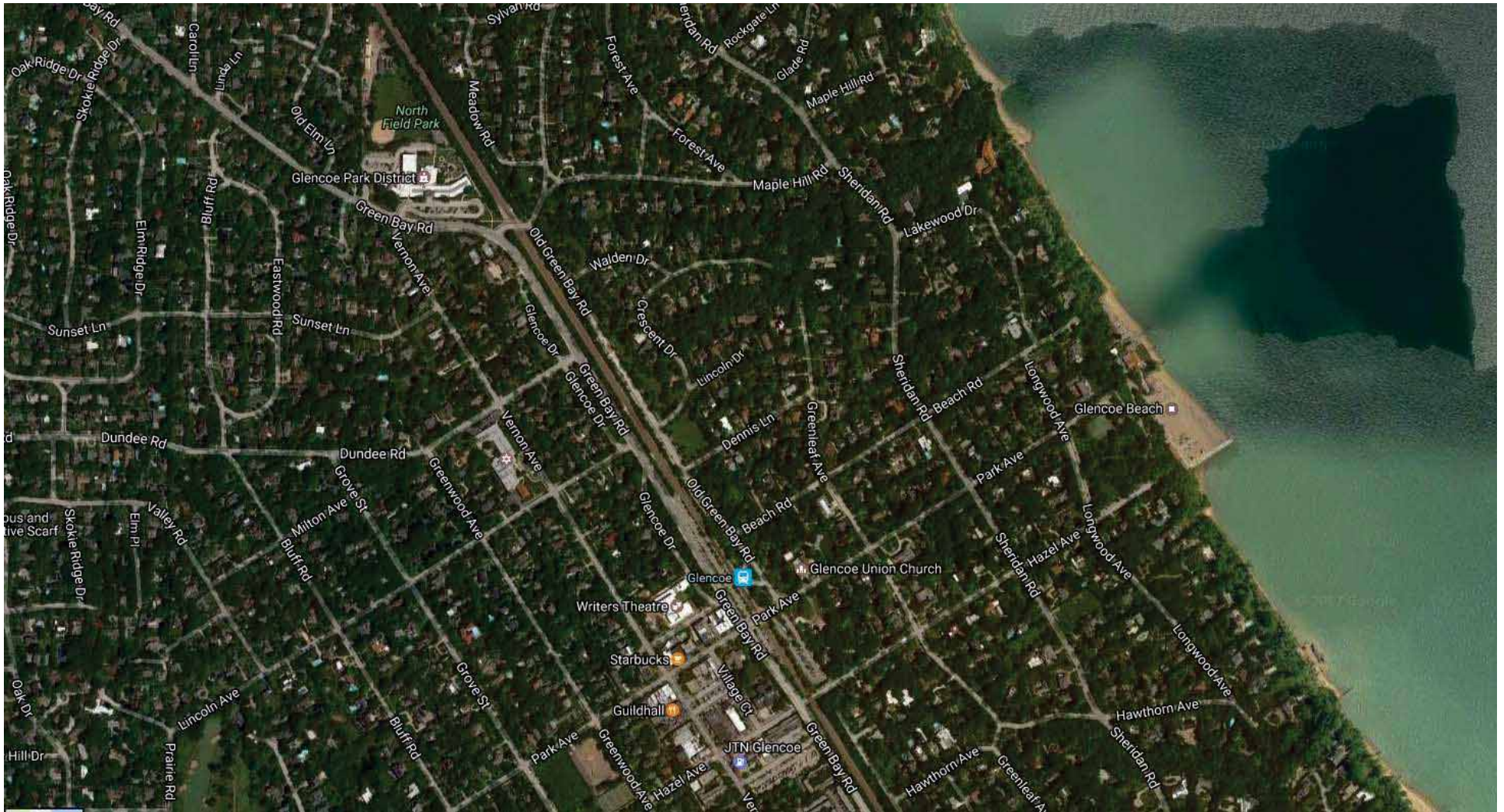
- 1928 beach house was updated/repaired
- Added playground and wood pergola,
- Added handicap access to the beach

Phase II

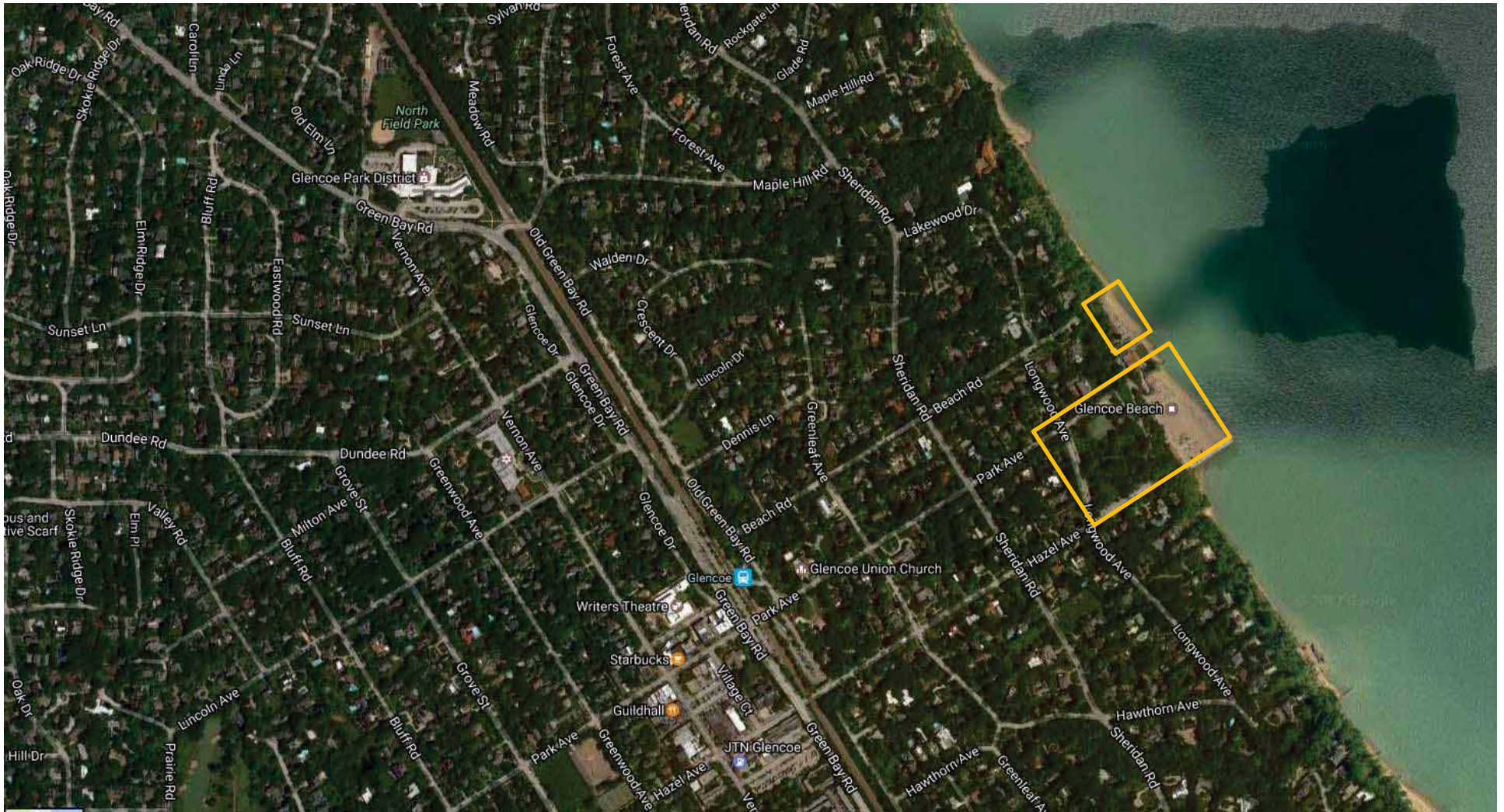
- Added native plants on the bluffs
- Added interpretive signs.
- Pathways updated and Play Equipment added



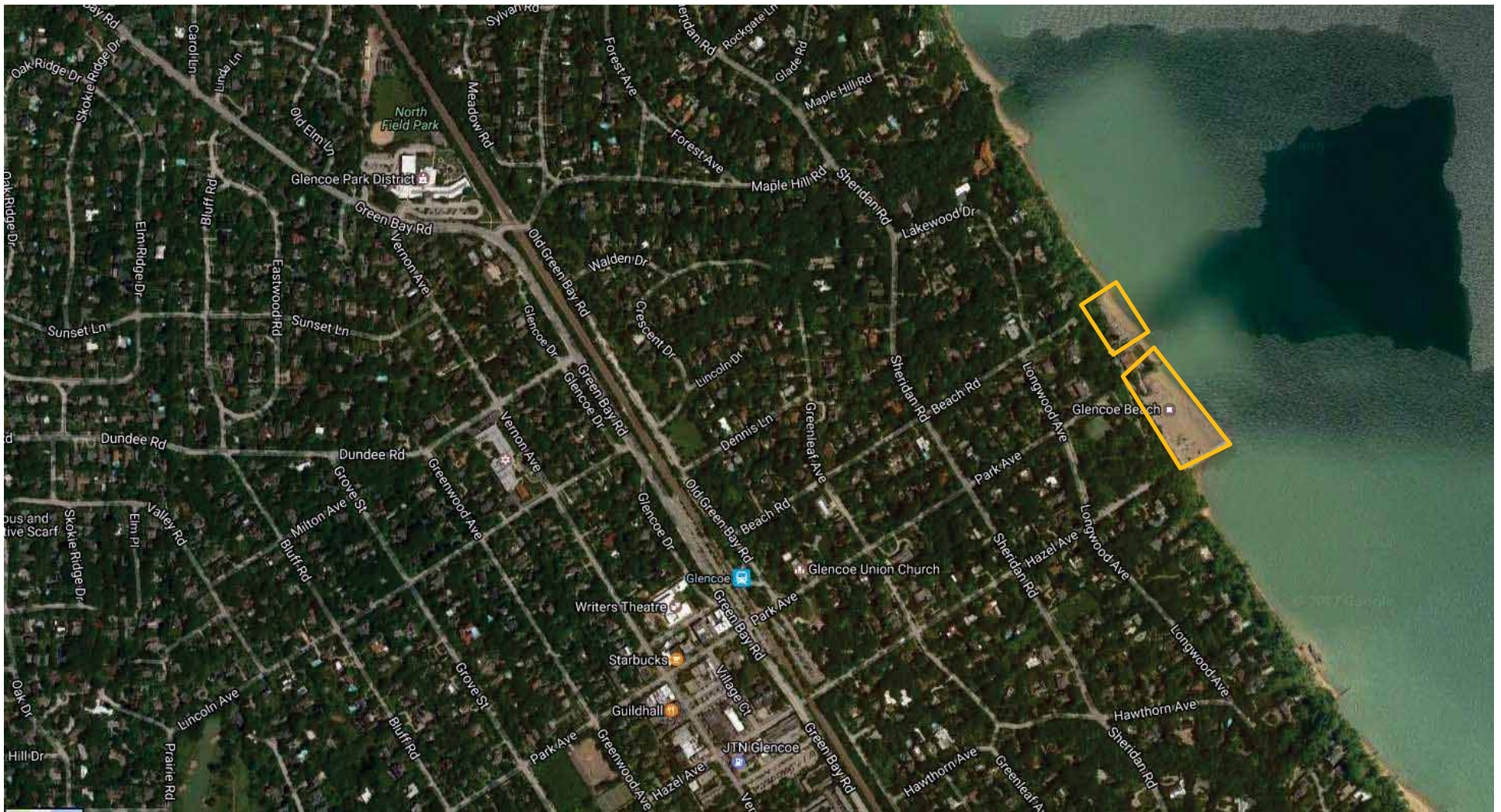
Lakefront Park Context



Lakefront Park Context



Lakefront Park Context: Major Public Beach



Lakefront Park Context: 2 Major Roadways Act as Boundaries



2 Regional Roadways, No Coastal Road, & Longwood is Local

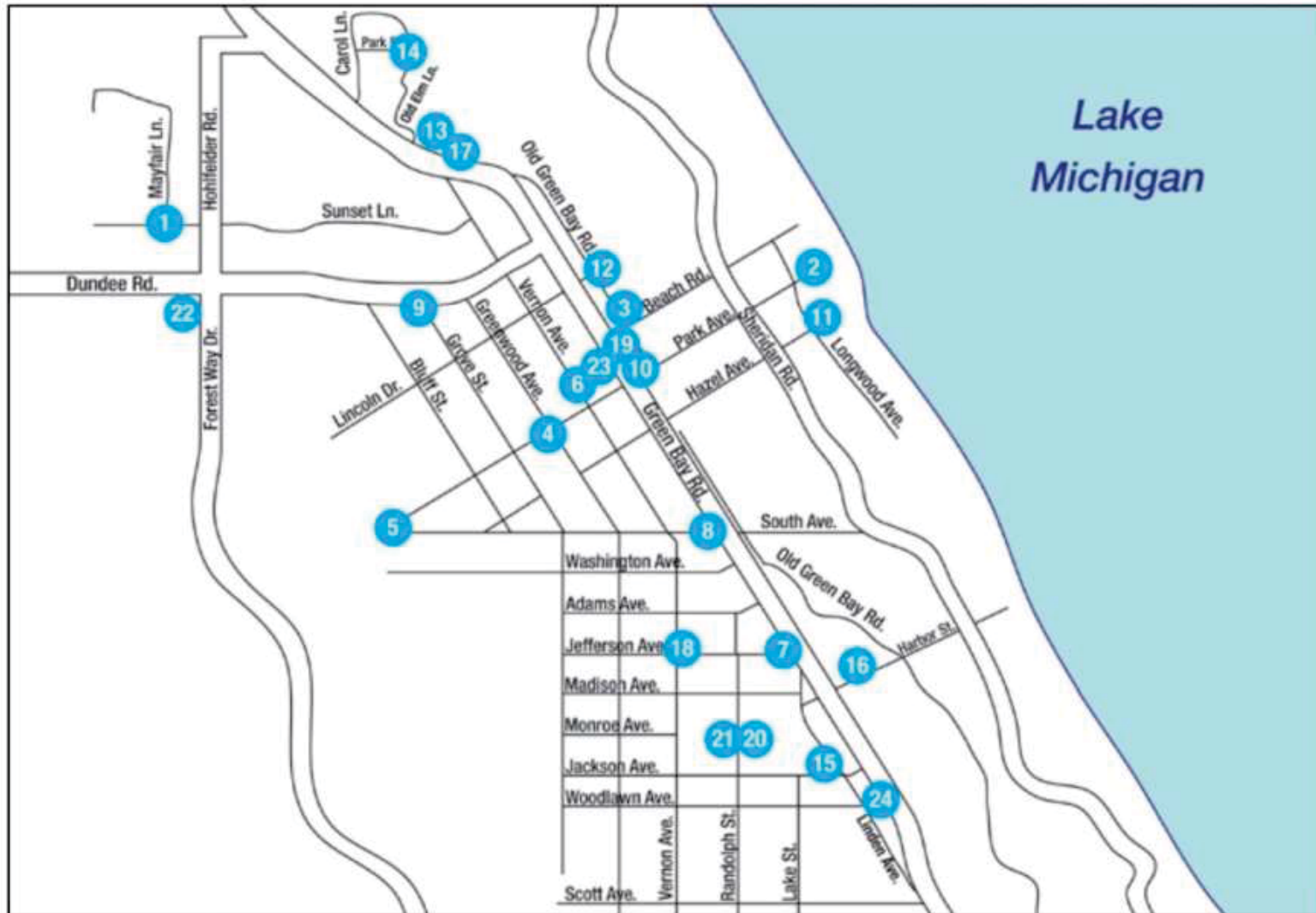


Lakefront Park Context: The Park is in a Local Location

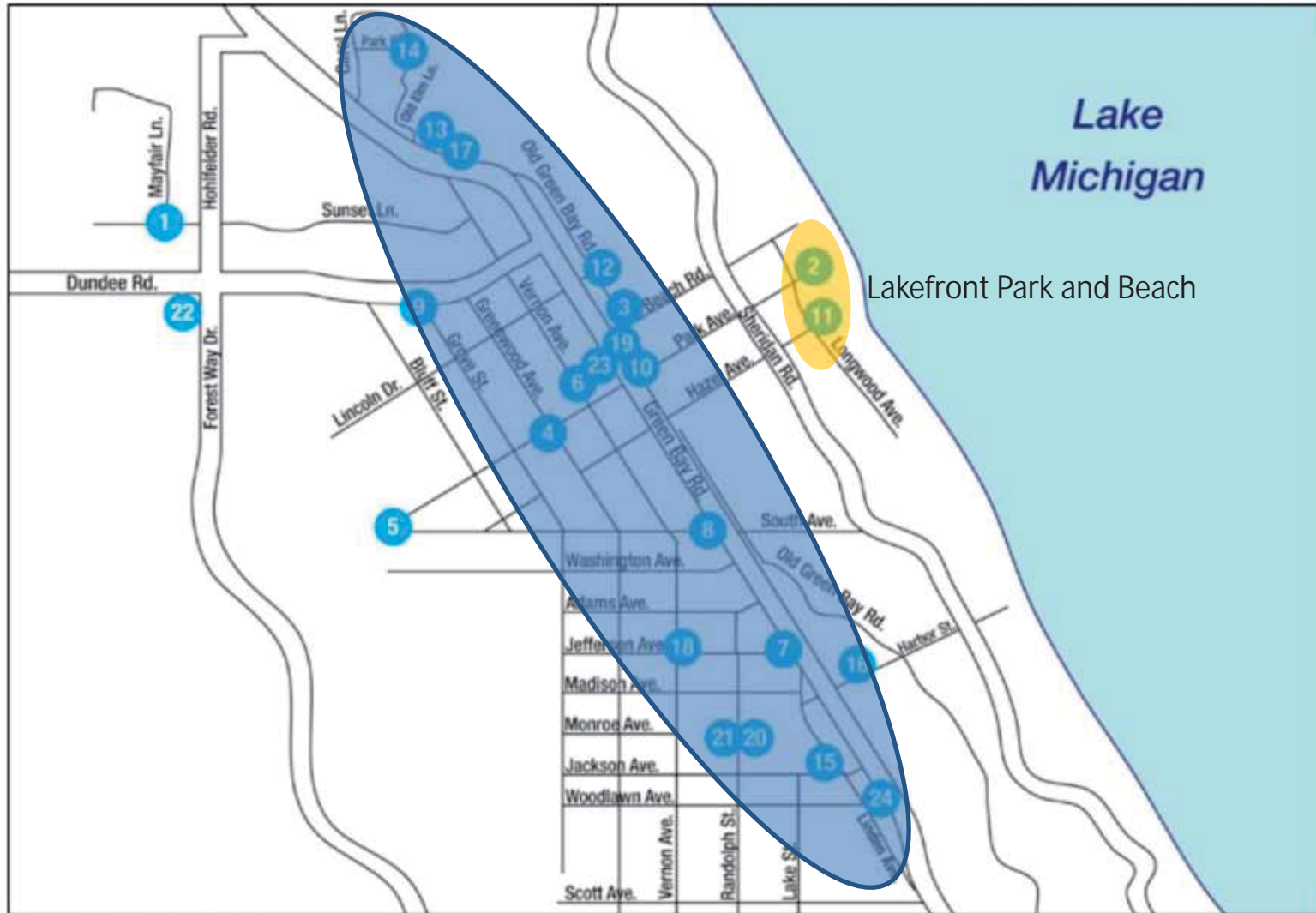
Local in Location But it is also a Regional Park



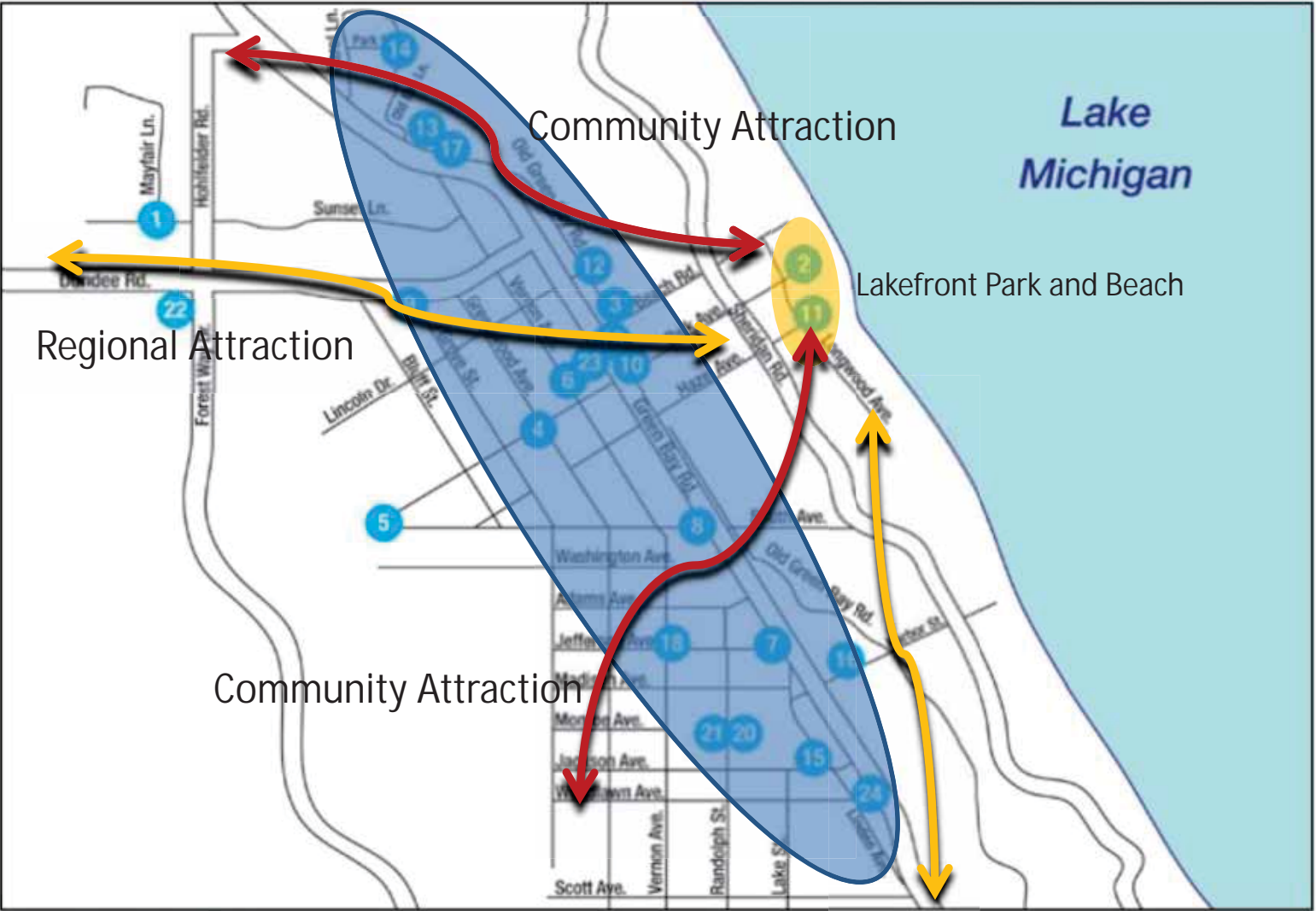
Lakefront Park Context: Other Park Locations



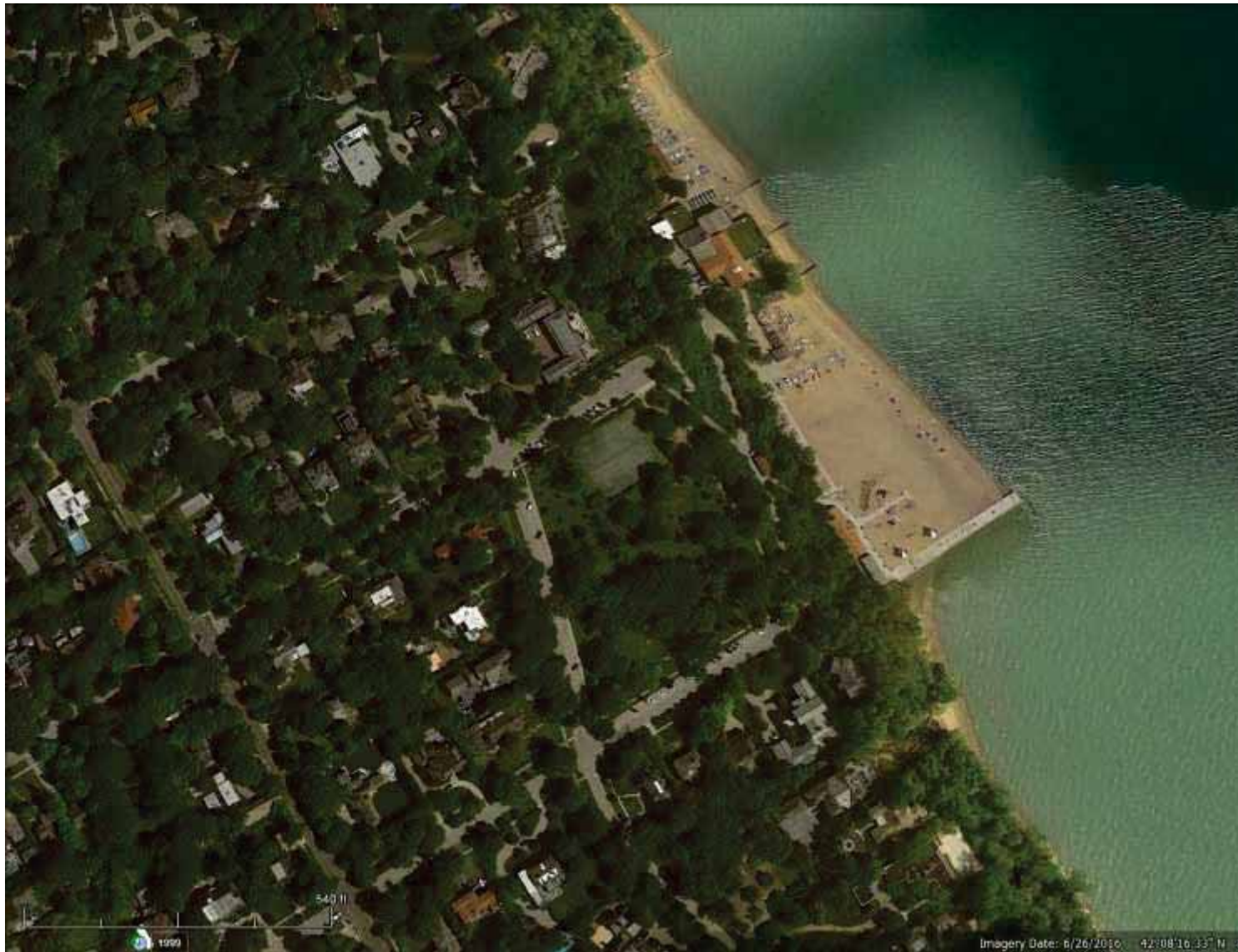
Lakefront Park Context: Nearly All are West of Sheridan Road



All of this Heightens Local v Regional Differing Perceptions



Lakefront Park: Local Context



Lakefront Park: Local Context



Lakefront Park: Local Context



12 Houses Face the Park Directly



12 Houses Also Face the Local Edge (Diagram is not Literal)



Lakefront Park Regional Use (Diagram is not Literal)



This Results in Rashomon

Akira Kurasowa:

Characters give alternate and contradictory views of the same incident



Locals:

It's Our Park!!!

**Region & Rest of
Glencoe:**

It's a Public Park!!!

Park District:??

Park District

**HARD
PLACE**



Lakefront Park: What's in the Park



Lakefront Park: trees layout "Rain Spotting"



Lakefront Park: Existing Conditions



Lakefront Park: Storm Water & Drainage



Lakefront Park: Storm Water & Drainage



Tennis Courts and Swing

Looking E to SE

Lakefront Park: Storm Water & Drainage



Looking SE from further into the park towards Entry Road on SE Corner

Lakefront Park: Storm Water & Drainage



Looking South along Bluff-Side Path Water Flows Across Paths at Bench

Lakefront Park: Storm Water & Drainage



Water Flows Across Paths in Park and Along Hazel Ave

Lakefront Park: Storm Water & Drainage



Water Flows Across Paths in Park and Along Hazel Ave

Lakefront Park: Storm Water & Drainage



Water Flows Across Paths and Mostly Passes Catch Basin in Park: Need a Delicate Regrade

Lakefront Park: Storm Water & Drainage



Water Flows Across Paths and Mostly Passes Catch Basin in Park: Need a Delicate Regrade

Lakefront Park: Tennis Courts

Reservoir is below the tennis courts



Views along Park Avenue

Lakefront Park: Tennis Courts



Views along Park Avenue

Lakefront Park: Storm Water & Drainage



View Looking SE



Storm Water Ponds Close to the Reservoir Access Hatch

Lakefront Park: Tennis Courts



Detail of planting along fence



View From Park

Lakefront Park Swing and Play Equipment



Lakefront Park Swing and Play Equipment



Lakefront Park Signage and Benches



Lakefront Park: ADA Compliant Path



“Shouldn’t there be some access so we can experience the trees?”

Lakefront Park: Potential Projects



Drainage and Concealing Paths in the landscape



How we could introduced paths as in other historic parks

Lakefront Park: Discussion





Something to think about in the Long Term : Small Exhibit Wetlands

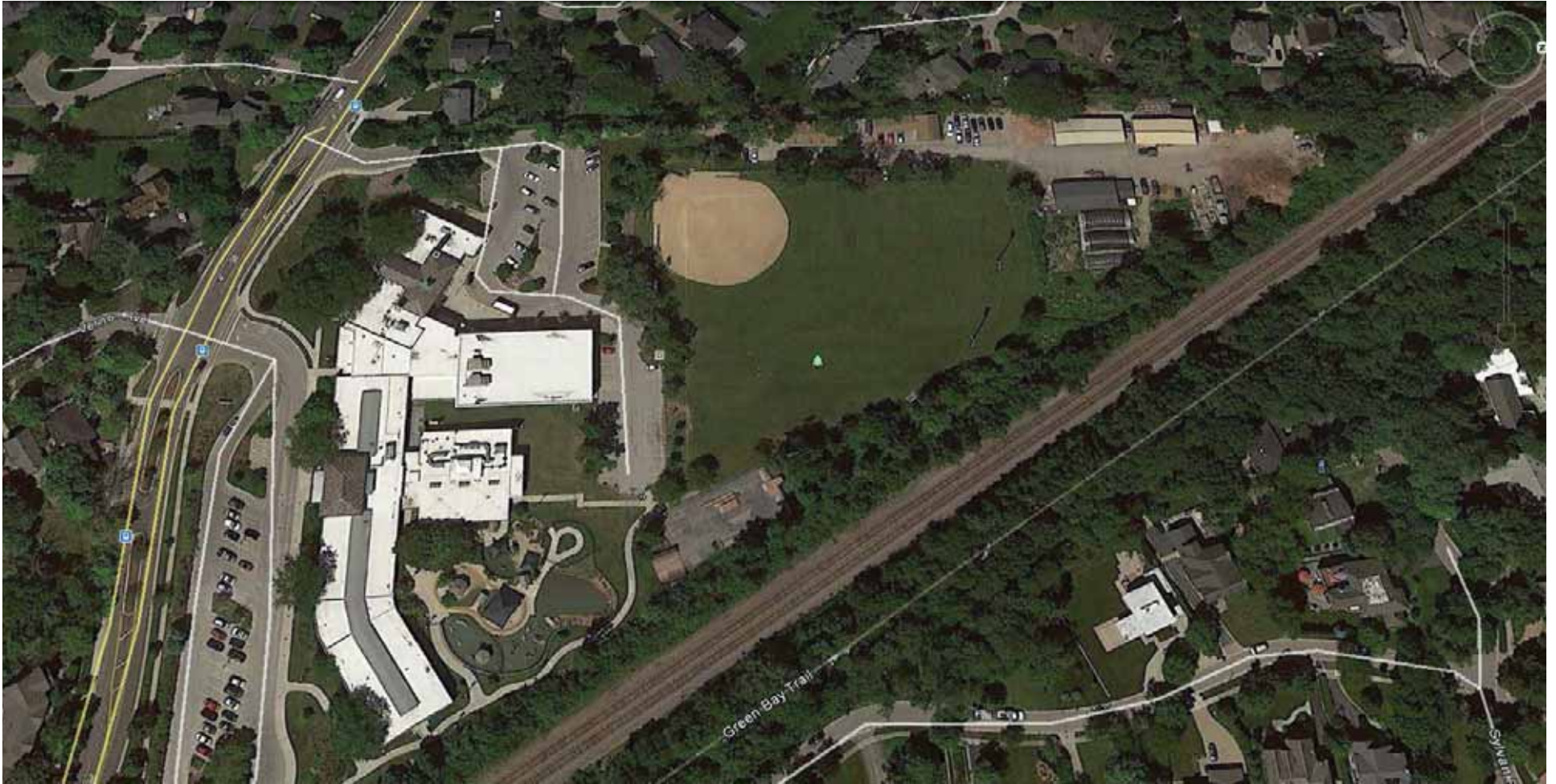


Consider adding a wetland for stormwater
and to provide a landscape exhibit for the kids
And habitat for birds and butterflies

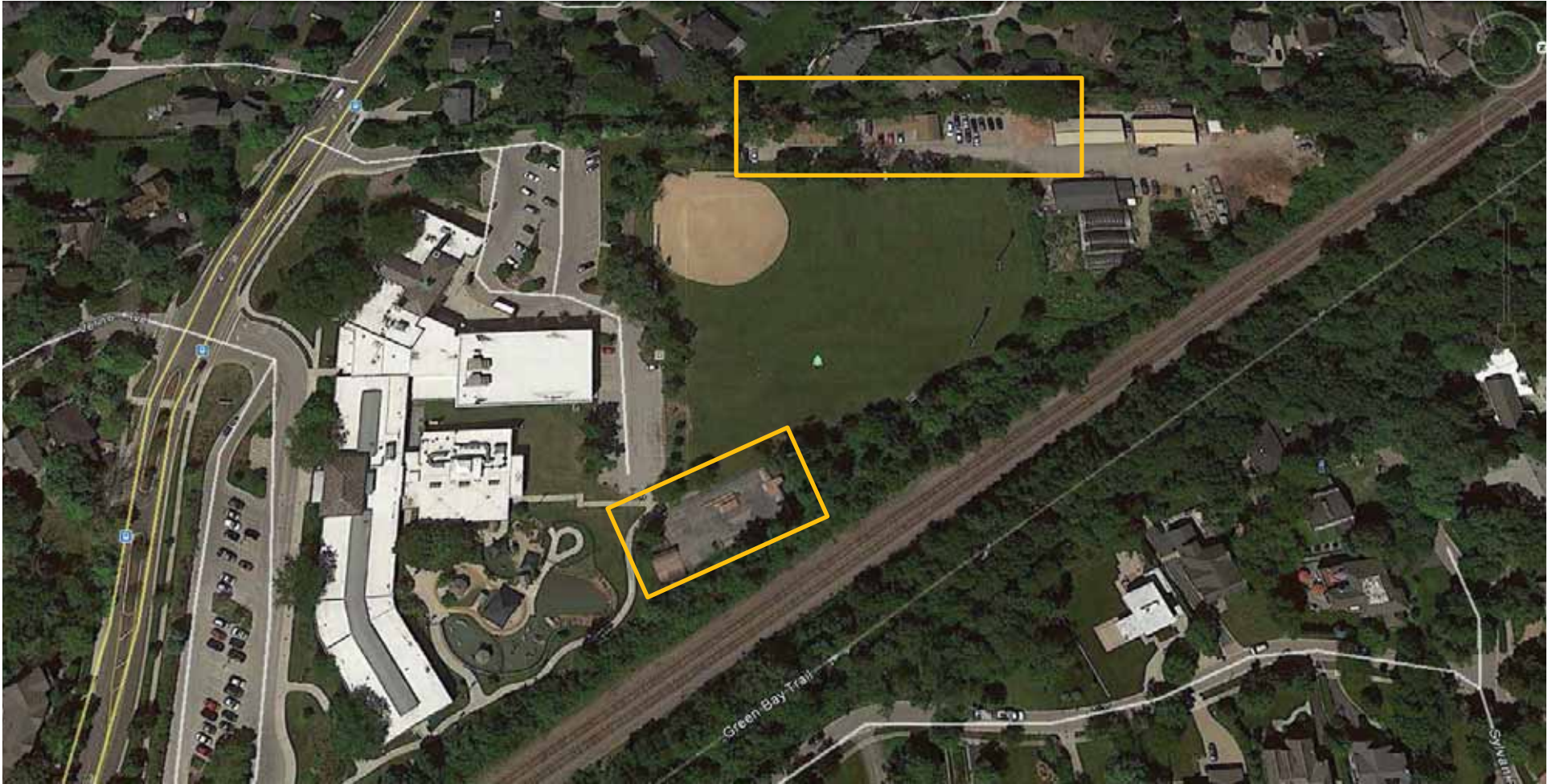


Board of Commissioners Meeting March 7th, 2017





Takiff Park



Potential Parking Areas: Takiff Park



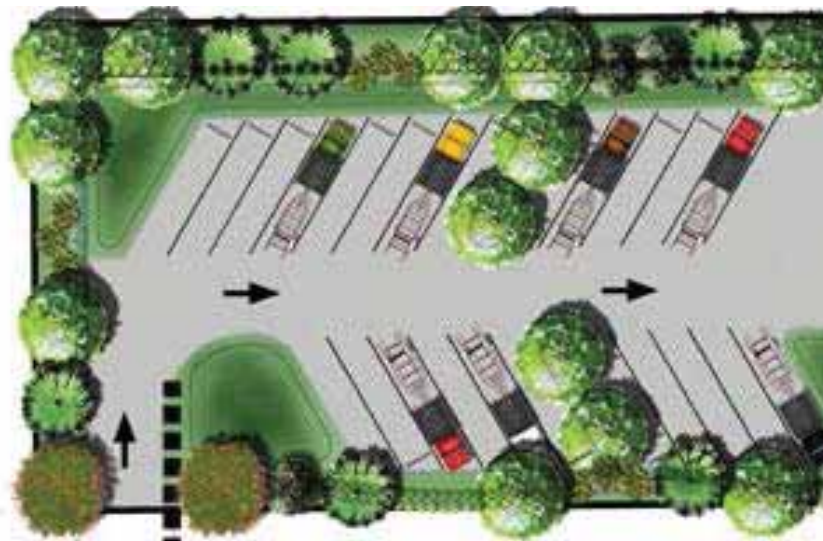
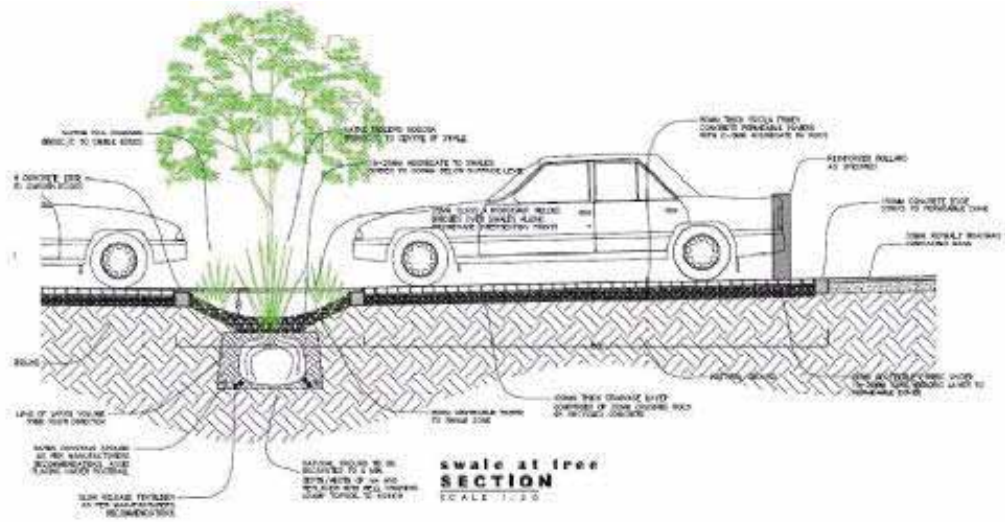
Potential Parking Areas: Takiff Park



View of Former Skate Park : Takiff Park

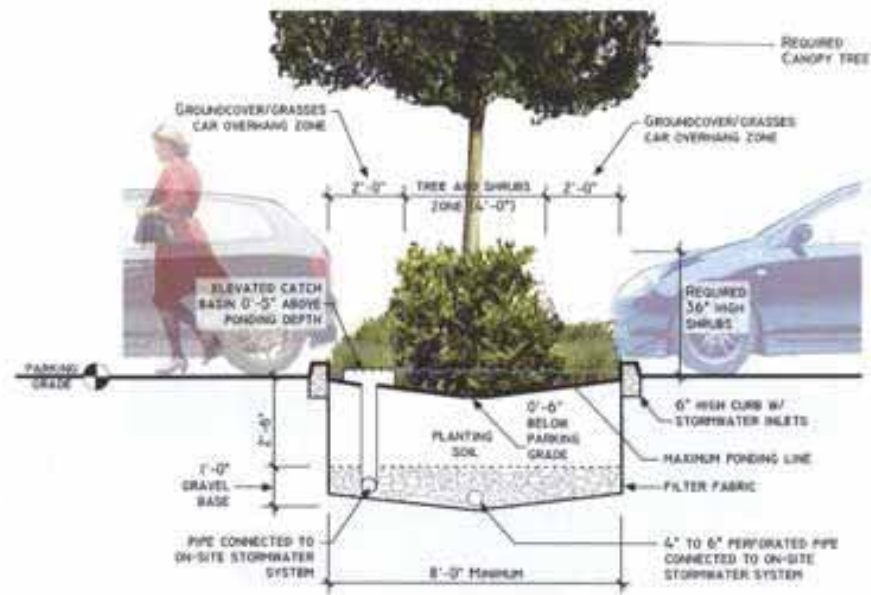


View of Maintenance Area: Takiff Park



Sustainable Parking Lots:
 Infiltration Permeable Pavement & Bio-Swales, Under Lot Storage Detention and Detention,
 High Albedo Pavement, Shade & Heat Islands, Native and Pollinator Planting

STORMWATER RETENTION CELL Interior landscaping



Sustainable Parking Lots: Infiltration Permeable Pavement & Bio-Swales, Under Lot Storage, High Albedo Pavement, Shade & Heat Islands, Native and Pollinator Planting