



**GLENCOE PARK DISTRICT
COMMITTEE OF THE WHOLE
Tuesday, June 6, 2017 - 6:30pm
Starts at Takiff Center**

Consistent with the requirements of the Illinois Compiled Statutes 5 ILCS 120/1 through 120/6 (Open Meetings Act), notices of this meeting were posted.
Meeting Location: Takiff Center, 999 Green Bay Road, Glencoe, IL 60022

AGENDA

- I. Call to Order
- II. Roll Call
- III. Matters from the Public
- IV. Tour of Park District Properties – Leave from Takiff Center Main Lobby
Tour via Park District Bus, Tour Includes (The order of visits may change):
 - Parks Maintenance Area
 - Old Elm and Park Place Park
 - Milton Playground
 - Clara Dietz Bird Sanctuary
 - Robert Everly Wildflower Sanctuary
 - Vernon and Jefferson Park
 - Sports fields at Watts
 - Sports fields at West Park
 - Woodlawn Park
 - Shelton Park
 - Lakefront Park
 - Old Green Bay Linear Parks – including sculpture
 - Lincoln Drive and Green Bay Park
 - Park 15N- WLC and Linear Park along Green Bay Road (SCP)
 - Takiff Playground
- V. Other Business
- VI. Adjournment

The Glencoe Park District is subject to the requirements of the Americans with Disabilities Act of 1990. Individuals with disabilities who plan to attend this meeting and who require certain accommodations in order to allow them to observe and/or participate in this meeting, or who have questions regarding the accessibility of the meeting or facilities, are asked to contact the Park District at 847-835-3030.
Executive Director Email: lsheppard@glencoeParkDistrict.com



TO: Board of Park District Commissioners

May 16, 2017

FROM: Lisa Sheppard

SUBJECT: Park Tour

Below is the lineup of parks we will be touring on Tuesday. I have also included information from the Master Plan for each park. We will have a lot of ground to cover, so we will keep each visit brief. Some parks we may stay on the bus and just give highlights to expedite the tour.

On Tuesday night, I will be providing every Board member with a clipboard and pen along with a note sheet for each park, so that you can take notes.

Tour Includes (The order of visits may change):

- Leave from Takiff Center Main Lobby at 6:30pm
- Parks Maintenance Area
- Old Elm and Park Place Park
- Milton Playground
- Clara Dietz Bird Sanctuary
- Robert Everly Wildflower Sanctuary
- Vernon and Jefferson Park
- Sports fields at Watts
- Sports fields at West Park
- Woodlawn Park
- Shelton Park
- Lakefront Park
- Old Green Bay Linear Parks – including sculpture
- Lincoln Drive and Green Bay Park
- Park 15N- WLC and Linear Park along Green Bay Road (SCP)
- Takiff Playground

Maintenance

Takiff Community Center Park

INVENTORY

Site Conditions

- Share site with ballfield and Takiff.
- Open material.
- Adjacent to residential.

Facility Conditions

- Multiple buildings occupied and constructed over time.
- Buildings generally in fair to poor condition.

Health, Safety, and Compliance

- Occupied buildings are not in compliance with current ADA code

Uses and Context

- Maintenance Staff

Additional Information

- Garage, break room and apartment - 30'x92'-2", 160 sq. ft. Built in 1930. This building has three bays, insulated overhead doors for vehicle storage, and washing capabilities. Employee break room for staff of seven with kitchen, laundry, and bathroom facilities. Parks supervisor office with bathroom. Main fire panel for entire area.
- Wood shop, 1,000 sq. ft. Approximate construction in 1960. Initially used as cold storage equipment storage. Renovated in 1980 as a woodshop and heated equipment storage.
- Parks Directors House, 1,500 sq. ft. Initially constructed in 1937 as a potting shed for a 5'x25' greenhouse. Potting shed portion changed to residence in 1950. Greenhouse was torn down and two bedrooms, a family room, and bathroom was constructed by parks staff in 1985. The house now has three bedrooms, two baths, a kitchen, family room, living room, dining room, and basement with laundry facilities.

- First brown garage, 160 sq. ft. Replaced a small cold storage garage in 1985. It is cold storage with dirt / gravel floor. Has five overhead roller garage doors and shelf storage.
- Second brown garage, 920 sq. ft. Constructed in 1982. It is cold storage with dirt / gravel floor. Has three overhead panel garage doors and shelf storage.
- Main maintenance garage and director of parks office, 2,500 sq. ft. Constructed in 1972. Garage is heated and has three insulated overhead garage doors, equipment lift, welding area, and is the main equipment repair area.
- Greenhouses. Constructed from a donation in 1989. There are two 18'x40' heated greenhouses, two cold storage greenhouses, and an area to store grown plants. Used to grow plants for parks, village, Glencoe Grow group and others.

Classification
Year Acquired
Year Built
Square Feet

Indoor facility

11,240

QTY	SQ FT	
		Restrooms
		Locker Rooms
1		Kitchen/Concessions
1		Offices
		Receptionist
		General
3		Storage
1		Maintenance
		Banquet/Community
		Classroom/Multi-purpose
		Auditorium
		Dance Room
		Teen Room
		Art Room
		Multi-purpose Rooms
		Gymnasium
		Indoor Turf Field
		Fitness/Weight Room
		Indoor Track
		Aquatics
		Indoor Activity Courts



Aerial



Old Elm & Park Place Park

Old Elm Lane & Park Place, Glencoe, Illinois 60022

Classification	Mir.
Year Acquired	01/01/1924
Acres	1.30
Tax Number	1909281040100000

INVENTORY

Context

Adjacent Land Use

- residential
- commercial / office
- institutional
- industrial
- open space

Street Classification

- arterial
- collector
- local
- alley

Pedestrian Connectivity

- sidewalk connections
- local trail connection
- regional trail connection
- none

Notes: Perimeter sidewalk present, no connections. Railroad tracks serve as a barrier to connections to the Green Bay Trail.

Natural Features

Hydrological Conditions

- floodplain / floodway
- wetland(s)
- open water
- none

Topographical Characteristics

- minimal
- moderate
- severe

Vegetation

- turf
- deciduous trees
- evergreen trees
- ornamental planting
- native plantings

Notes: Heavily wooded, inaccessible area on north side of property.

Site Characteristics

Playground Elements

- modular structure
- independent play elements
- swings
- none

Notes: Modular structure designed for 2-12 year age group. Independent play pieces include spinners, spring rockers, and sand digger / sand play area. Swings have two tot/two belt.

Sports Fields

- pony
- mustang
- bronco
- none / other

Trails

- asphalt
- concrete
- other
- none

Notes: No internal trail system or accessible routes to amenities.

Site Amenities

- picnic tables
- benches
- lighting
- trash receptacles
- drinking fountain

Notes: Fence is present along perimeter of park. Swing bench on site.

Utilities

- water
- electrical
- none

Notes: Along perimeter.

Uses & Programs

Uses

- drop-in neighborhood
- regional
- recreation programming
- affiliate organizations



Planning Area	2
Service Area	.25 mi.
Pop. Served	126

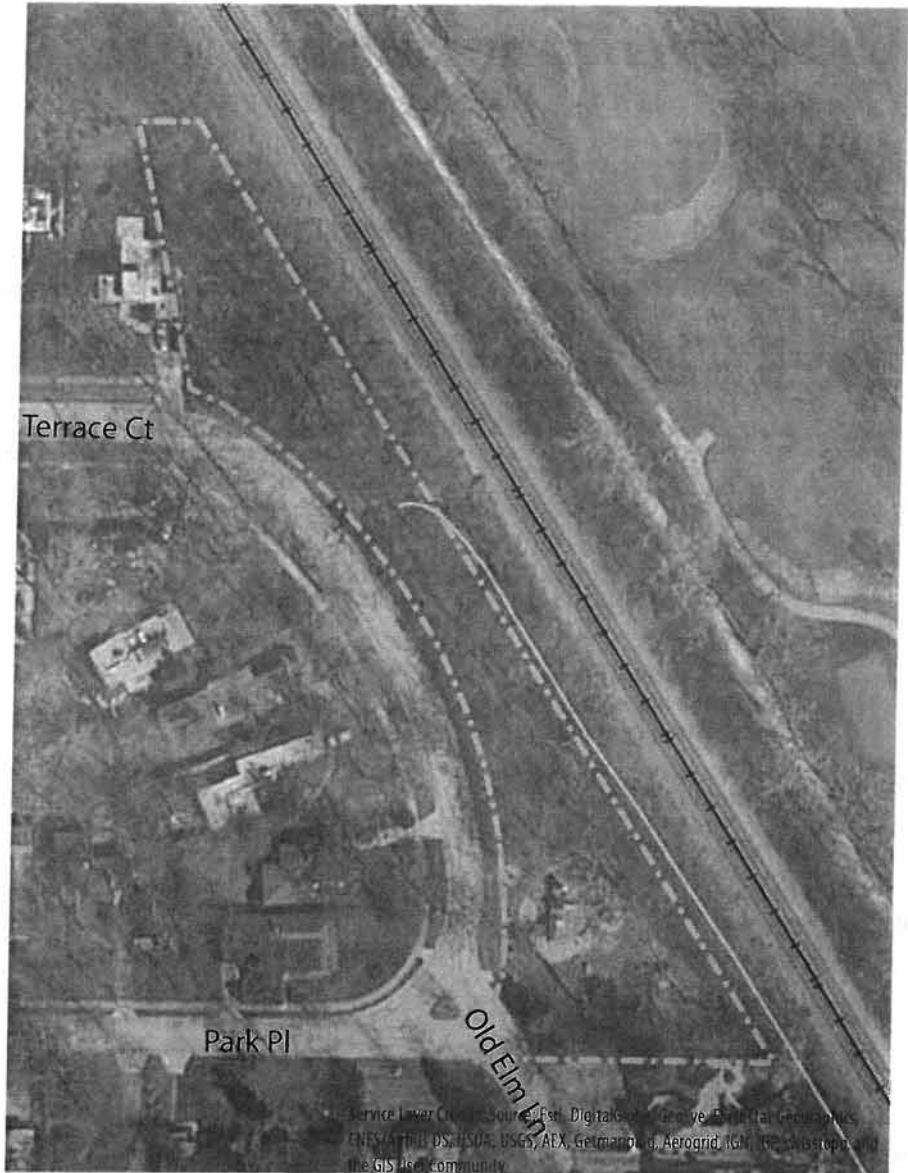
ANALYSIS

This small, mini park serves approximately 126 people in the surrounding area. Featuring a modular structure, spinners, spring rockers, swings, and a sand play area, the playground offers play opportunities for all ages between two and twelve. The playground has engineered wood fiber surfacing and a concrete curb. The equipment is nine years old and is in good condition. The planning team witnessed a plethora of toys at the playground, giving the impression that the park is heavily used by adjacent residents.

The inaccessible natural area offers the opportunity for additional passive recreation. There are not concrete pads under seating and picnic areas. The turf has been eroded beneath the seating areas due to use, and the lack of concrete pads hinders accessibility.

AMENITIES

QTY	Year	
		Trails-Multi-Use (miles)
		Restrooms
		Picnic Shelter
1		Picnic Area
1	2005	Playground
		Basketball
		Baseball / Softball
		Disc Golf (holes)
		Skate Park
		Soccer
		Tennis
		Volleyball
		Beach
		Boating / Sailing
		Swimming
		Splash Pad
		On-Street Parking
		Parking Lot
		Interpretive Elements
		Park Signage
		Stormwater Retention
		Wetland
1		Natural Area, Gardens



Milton Park

Dundee Road & Milton Avenue, Glencoe, Illinois 60022

INVENTORY

Context

Adjacent Land Use

- residential
- commercial / office
- institutional
- industrial
- open space

Street Classification

- arterial
- collector
- local
- alley

Pedestrian Connectivity

- sidewalk connections
- local trail connection
- regional trail connection
- none

Natural Features

Hydrological Conditions

- floodplain / floodway
- wetland(s)
- open water
- none

Topographical Characteristics

- minimal
- moderate
- severe

Vegetation

- turf
- deciduous trees
- evergreen trees
- ornamental planting
- native plantings

Site Characteristics

Playground Elements

- modular structure
- independent play elements
- swings
- none

Notes: One tot and one belt swing present along with a spinner and spring rocker play element. Modular structure is designed for 2-12 year age group.

Sports Fields

- pony
- mustang
- bronco
- none / other

Trails

- asphalt
- concrete
- other
- none

Notes: Trail on north side of site connects to perimeter sidewalk. Asphalt trail located near playground provides accessible route.

Site Amenities

- picnic tables
- benches
- lighting
- trash receptacles
- drinking fountain

Utilities

- water
- electrical
- none

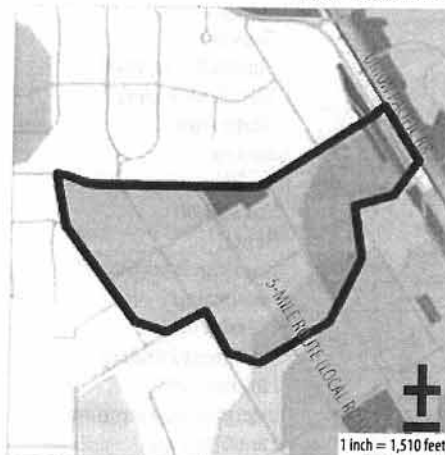
Notes: Along perimeter.

Uses & Programs

Uses

- drop-in neighborhood
- regional
- recreation programming
- affiliate organizations

Classification	Mit
Year Acquired	01/01/1923
Acres	1.60
Tax Number	05-07-106-004-0000, a portion of the right-of-way, 05-07-113-004-000, 05-07-019-004-0000, 05-07-106-004-0000



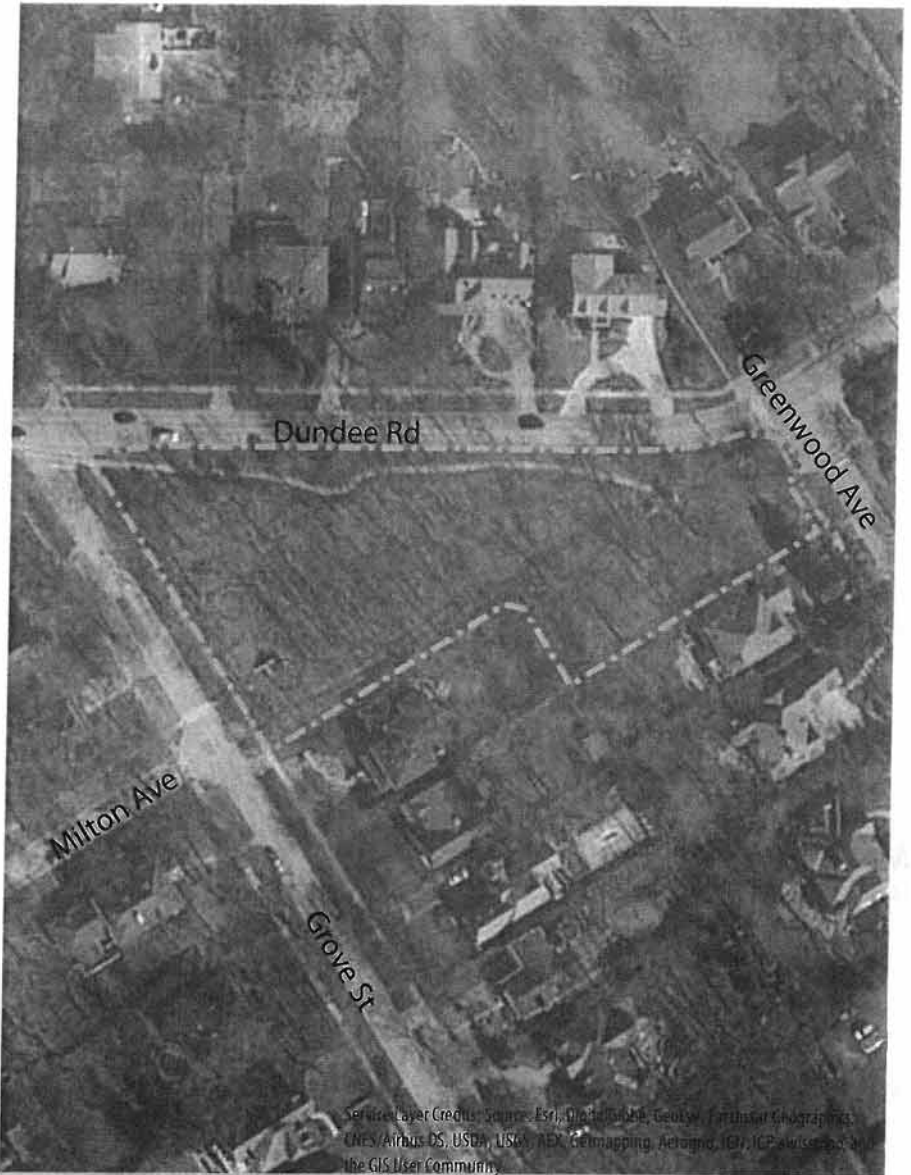
Planning Area	5
Service Area	.25 mi.
Pop. Served	308

ANALYSIS

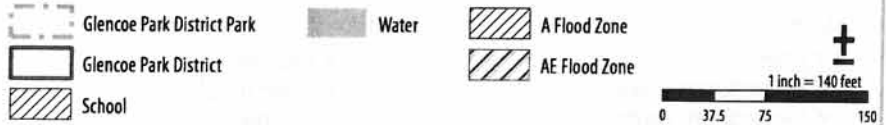
Milton Park serves approximately 308 people in planning area five. The park features a six-year old playground and 0.21 miles of trails. The playground is fenced in, offers an accessible route, and is built for the 2-12 age group. While highly visible and located along a major collector street, the park lacks identification signage.

AMENITIES

QTY	Year	
...		Trails-Multi-Use (miles)
		Restrooms
		Picnic Shelter
1		Picnic Area
1	2008	Playground
		Basketball
		Baseball / Softball
		Disc Golf (holes)
		Skate Park
		Soccer
		Tennis
		Volleyball
		Beach
		Boating / Sailing
		Swimming
		Splash Pad
		On-Street Parking
		Parking Lot
		Interpretive Elements
		Park Signage
		Stormwater Retention
		Wetland
1		Natural Area, Gardens



Legend



Clara Dietz Bird Sanctuary

Park Avenue & South Avenue, Glencoe, Illinois 60022

Classification
Year Acquired
Acres
Tax Number

Natural Area
01/01/1917
0.94
05071130010000

INVENTORY

Context

Adjacent Land Use

- residential
- commercial / office
- institutional
- industrial
- open space

Street Classification

- arterial
- collector
- local
- alley

Pedestrian Connectivity

- sidewalk connections
- local trail connection
- regional trail connection
- none

Natural Features

Hydrological Conditions

- floodplain / floodway
- wetland(s)
- open water
- none

Topographical Characteristics

- minimal
- moderate
- severe

Vegetation

- turf
- deciduous trees
- evergreen trees
- ornamental planting
- native plantings

Notes: Heavy tree cover.
Natural areas.

Site Characteristics

Playground Elements

- modular structure
- independent play
- swings
- none

Sports Fields

- pony
- mustang
- bronco
- none / other

Trails

- asphalt
- concrete
- other
- none

Notes: Mulch

Site Amenities

- picnic tables
- benches
- lighting
- trash receptacles
- drinking fountain

Notes: Seating and gathering areas present.
Interpretive elements throughout the site.

Utilities

- water
- electrical
- none

Notes: Along perimeter

Uses & Programs

Uses

- drop-in neighborhood
- regional
- recreation programming
- affiliate organizations

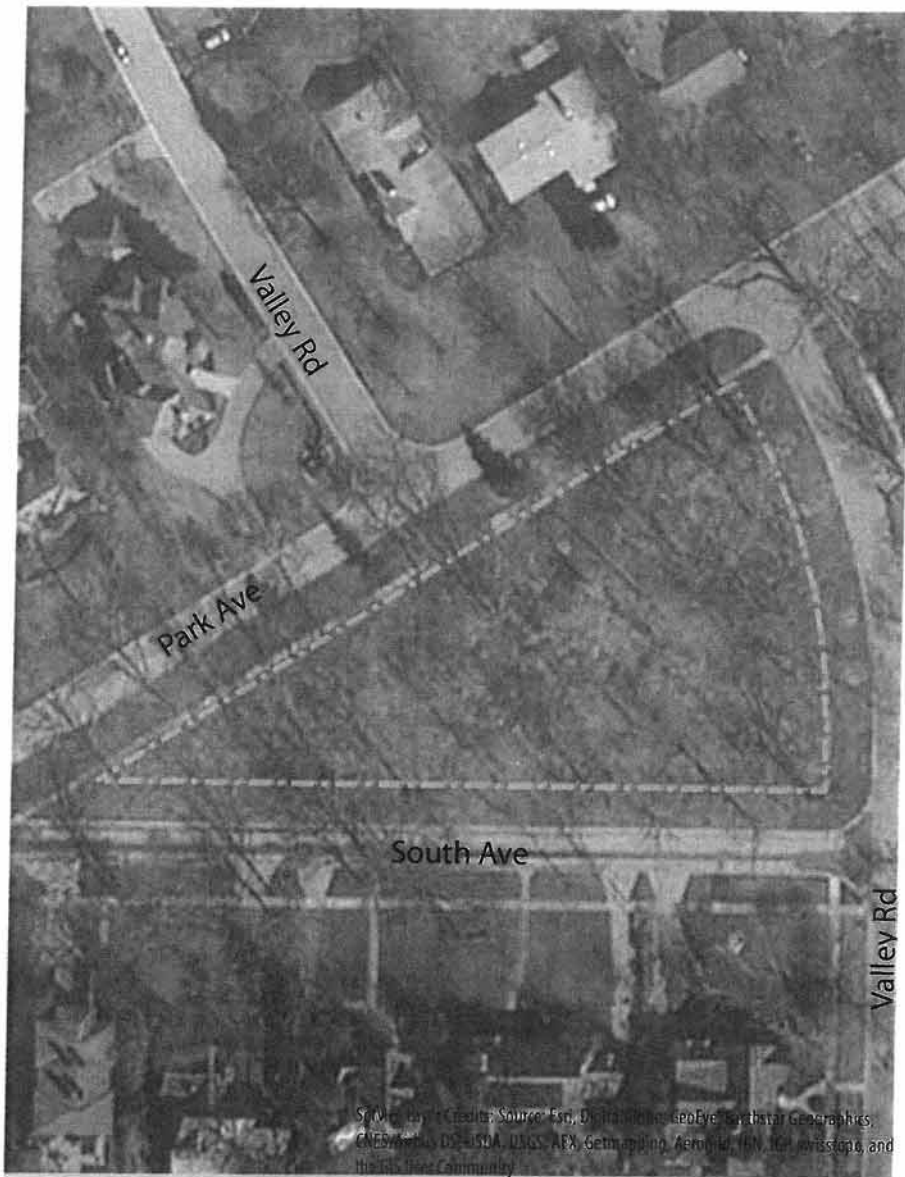
AMENITIES

QTY	Year	
.1		Trails-Multi-Use (miles)
		Picnic Shelter
1		Picnic Area
		Playground
		Beach
		Boating / Sailing
		Swimming
		Splash Pad
		On-Street Parking
		Parking Lot
1		Interpretive Elements
		Park Signage
		Stormwater Retention
		Wetland
1		Natural Area, Gardens

ANALYSIS

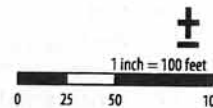
Clara Dietz Bird Sanctuary is a natural area within the Park District. Deciduous and evergreen trees provide heavy tree cover and large shrubs and native plants are present around the site. A mulch trail provides a looping pathway around the site. Along this path are seating and gathering areas as well as interpretive elements.

Some drainage issues to appear on the south side of the site, some of which affect the perimeter sidewalk and access to the natural area.



Legend

-  Glencoe Park District Park
-  Glencoe Park District
-  School
-  Water
-  A Flood Zone
-  AE Flood Zone



Robert Everly Wildflower Sanctuary

Linden Avenue & Jackson Avenue, Glencoe, Illinois 60022

Classification
Year Acquired
Acres
Tax Number

Natural Area
01/01/1924
2.48
1909281040100000

INVENTORY

Context

Adjacent Land Use

- residential
- commercial / office
- institutional
- industrial
- open space

Notes: Adjacent to South School, Watts Park and Watts Center.

Street Classification

- arterial
- collector
- local
- alley

Pedestrian Connectivity

- sidewalk connections
- local trail connection
- regional trail connection
- none

Natural Features

Hydrological Conditions

- floodplain / floodway
- wetland(s)
- open water
- none

Notes: Small wetland area present near boardwalk. Standing water.

Topographical Characteristics

- minimal
- moderate
- severe

Vegetation

- turf
- deciduous trees
- evergreen trees
- ornamental planting
- native plantings

Notes: Heavy tree cover. Natural areas.

Site Characteristics

Playground Elements

- modular structure
- independent play
- swings
- none

Sports Fields

- pony
- mustang
- bronco
- none / other

Trails

- asphalt
- concrete
- other
- none

Notes: Mulch

Site Amenities

- picnic tables
- benches
- lighting
- trash receptacles
- drinking fountain

Notes: Seating and gathering areas not present within natural area.

Utilities

- water
- electrical
- none

Notes: Along perimeter.

Uses & Programs

Uses

- drop-in neighborhood
- regional
- recreation programming
- affiliate organizations

Notes: School Uses and recreation programming.

AMENITIES

QTY	Year	
.2		Trails-Multi-Use (miles)
		Picnic Shelter
		Picnic Area
		Playground
		Beach
		Boating / Sailing
		Swimming
		Splash Pad
		On-Street Parking
		Parking Lot
		Interpretive Elements
1		Park Signage
		Stormwater Retention
1		Wetland
1		Natural Area, Gardens

ANALYSIS

Everly Wildflower Sanctuary features a mulch path and boardwalk over a small wetland area. The site is utilized by recreation programming and affiliate organizations - specifically, South School. While the school incorporates the natural area as an outdoor classroom, there are no spaces within the site that allow for gathering or seating. An outdoor classroom space would be a beneficial improvement to the site. The site also lacks any interpretive or educational elements. Incorporating elements that tie into school curriculums or Park District programming would improve the experience at the site.

Additional amenities that would fit into the context of the nature area include a natural play area, council ring, and additional boardwalks.

Vernon & Jefferson Park (13S-1)

Vernon Avenue & Jefferson Avenue, Glencoe, Illinois 60022

Classification	Mir.
Year Acquired	01/01/1927
Acres	0.71
Tax Number	1909281040100000

INVENTORY

Context

Adjacent Land Use

- residential
- commercial / office
- institutional
- industrial
- open space

Street Classification

- arterial
- collector
- local
- alley

Pedestrian Connectivity

- sidewalk connections
- local trail connection
- regional trail connection
- none

Notes: Perimeter sidewalk present, no accessible connections between sidewalk and park.

Natural Features

Hydrological Conditions

- floodplain / floodway
- wetland(s)
- open water
- none

Topographical Characteristics

- minimal
- moderate
- severe

Vegetation

- turf
- deciduous trees
- evergreen trees
- ornamental planting
- native plantings

Site Characteristics

Playground Elements

- modular structure
- independent play elements
- swings
- none

Notes: Play elements include a 2-12 modular structure, spinners, spring rockers, and swings (two belt, two tot).

Sports Fields

- pony
- mustang
- bronco
- none / other

Trails

- asphalt
- concrete
- other
- none

Notes: No accessible route to playground

Site Amenities

- picnic tables
- benches
- lighting
- trash receptacles
- drinking fountain

Notes: Swing bench present. No concrete pads at picnic / seating areas. Drinking fountain doesn't appear to work.

Utilities

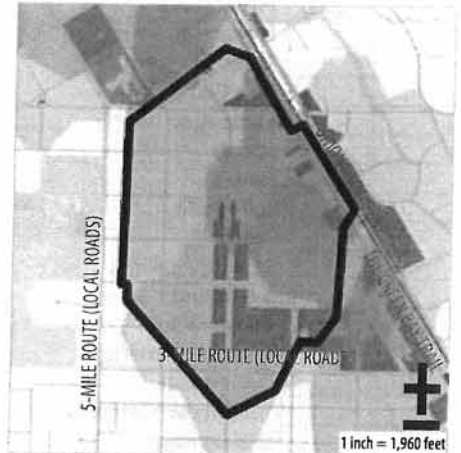
- water
- electrical
- none

Notes: Along perimeter.

Uses & Programs

Uses

- drop-in neighborhood
- regional
- recreation programming
- affiliate organizations



Planning Area	5
Service Area	.25 mi.
Pop. Served	1189

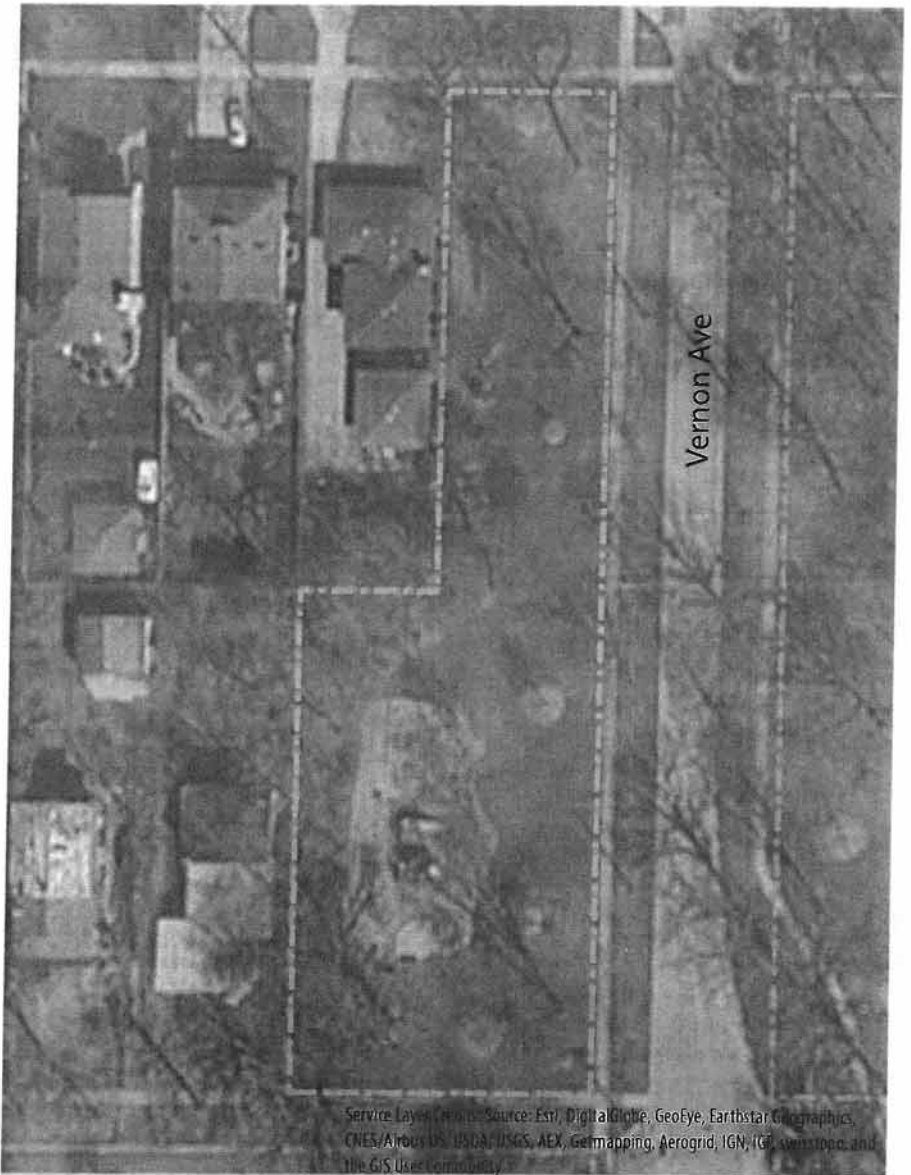
ANALYSIS

Vernon and Jefferson Park lies along Vernon Avenue, adjacent to both residential land use and open space. The park is part of a larger greenway system that connects to Watts Park. While the open space greenway is present, the land is mostly undeveloped and serves as a greenway in name only. There are no amenities, trails, or other elements that encourage use as a larger park / open space system.

Vernon and Jefferson sits on the northernmost parcel of the greenway. Featuring an eight year old playground and picnic area, the park offers activities for the 2-12 year age group. The play equipment is in good condition. Seating and picnic areas are provided; however, there are no concrete pads underneath or accessible routes to these features. An accessible route to the playground itself is also not present.

AMENITIES

QTY	Year	
		Trails-Multi-Use (miles)
		Restrooms
		Picnic Shelter
1		Picnic Area
1	2006	Playground
		Basketball
		Baseball / Softball
		Disc Golf (holes)
		Skate Park
		Soccer
		Tennis
		Volleyball
		Beach
		Boating / Sailing
		Swimming
		Splash Pad
		On-Street Parking
		Parking Lot
		Interpretive Elements
		Park Signage
		Stormwater Retention
		Wetland
		Natural Area, Gardens



Watts Park

300 Randolph Street, Glencoe, Illinois 60022

Classification	Community Par.
Year Acquired	01/01/1924
Acres	10.40
Tax Number	1909281040100000

INVENTORY

Context

Adjacent Land Use

- residential
- commercial / office
- institutional
- industrial
- open space

Notes: Adjacent to undeveloped open space

Street Classification

- arterial
- collector
- local
- alley

Pedestrian Connectivity

- sidewalk connections
- local trail connection
- regional trail connection
- none

Natural Features

Hydrological Conditions

- floodplain / floodway
- wetland(s)
- open water
- none

Topographical Characteristics

- minimal
- moderate
- severe

Vegetation

- turf
- deciduous trees
- evergreen trees
- ornamental planting
- native plantings

Notes: Heavy tree cover. Ornamental plantings near the Watt Center building. Evergreens frame the sled hill.

Site Characteristics

Playground Elements

- modular structure
- independent play
- swings
- none

Notes: Play structure in poor condition. One belt, one tot swing present - poor condition. Sand digger. Engineered wood fiber.

Sports Fields

- pony
- mustang
- bronco
- none / other

Notes: Retractable batting cages present along with dugouts, bleachers, and storage. Tennis and basketball present. Soccer is present. Irrigation (2007)

Trails

- asphalt
- concrete
- other
- none

Notes: Poor condition

Site Amenities

- picnic tables
- benches
- lighting
- trash receptacles
- drinking fountain (1985)

Notes: Limestone terracing is present near soccer field for seating.

Utilities

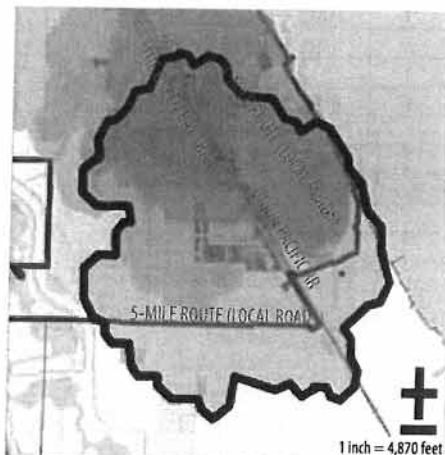
- water
- electrical
- none

Notes: From Watts Center and School

Uses & Programs

Uses

- drop-in neighborhood
- regional
- recreation programming
- affiliate organizations



Planning Area	2
Service Area	1-3 mi.
Pop. Served	4,438

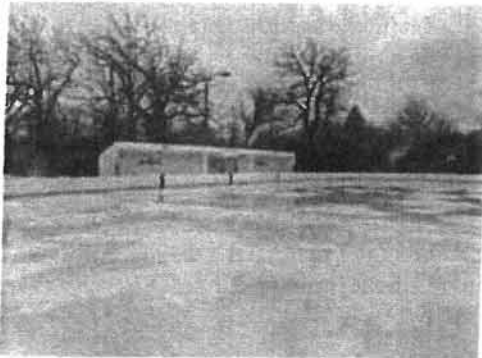
ANALYSIS

Watts Park is one of the most active parks in the Glencoe Park District. With the Watts Ice Center, bronco ball field, tennis courts, and basketball the park is well used. The amenities, while well used, are in need of repair and updates. The playground is beyond its useful life (21 years old) and is in poor condition. The playground is hidden by the Ice Center and is immediately adjacent to the school playground, so upon renovation, the actual location of the playground needs to be reconsidered - perhaps moving it to the open space on the other side near Vernon Avenue.

The tennis surface was color coated in July 2014 and the fencing is in good condition. The basketball courts are far beyond their useful life and need to be replaced. While a trail is present throughout the park, there lacks an option to walk a loop around the park, instead only allowing visitors to walk through.

AMENITIES

QTY	Year	
.52	1985	Trails-Multi-Use (miles)
		Restrooms
		Picnic Shelter
		Picnic Area
1	1993	Playground
2	1985	Basketball
	2004	Color coat
1	2008	Baseball / Softball
	2002	Batting Cages
	2000	Scoreboard
9	2000	Disc Golf (holes)
	2004	tee improvements
	2005	tee Pads
		Skate Park
1		Soccer
2	1999	Tennis
	2000	Windscreen
		Volleyball
		Fishing (*dock)
2	2000	Ice Skating
1		Sledding
		Beach
		Boating / Sailing
		Swimming
		Splash Pad
		On-Street Parking
1		Parking Lot
		Interpretive Elements
1	2003	Park Signage
		Stormwater Retention
		Wetland
		Natural Area, Gardens



West Park

Forestway Drive & Dundee Road, Glencoe, Illinois 60022

Classification	Neighborhood Par.
Year Acquired	01/01/1957
Acres	4.20
Tax Number	1909281040100000

INVENTORY

Context

Adjacent Land Use

- residential
- commercial / office
- institutional
- industrial
- open space

Notes: Immediately adjacent to West School

Street Classification

- arterial
- collector
- local
- alley

Pedestrian Connectivity

- sidewalk connections
- local trail connection
- regional trail connection
- none

Notes: Connections to perimeter sidewalk and to tennis courts

Natural Features

Hydrological Conditions

- floodplain / floodway
- wetland(s)
- open water
- none

Topographical Characteristics

- minimal
- moderate
- severe

Vegetation

- turf
- deciduous trees
- evergreen trees
- ornamental planting
- native plantings

Site Characteristics

Playground Elements

- modular structure
- independent play
- swings
- none

Sports Fields

- pony
- mustang
- bronco
- none / other

Notes: Pony field has bleachers, backstop, and dugouts (all poor condition). Tennis courts in good condition.

Trails

- asphalt
- concrete
- other
- none

Notes: No internal trail system. Accessible routes to southeast.

Site Amenities

- picnic tables
- benches
- lighting
- trash receptacles
- drinking fountain

Utilities

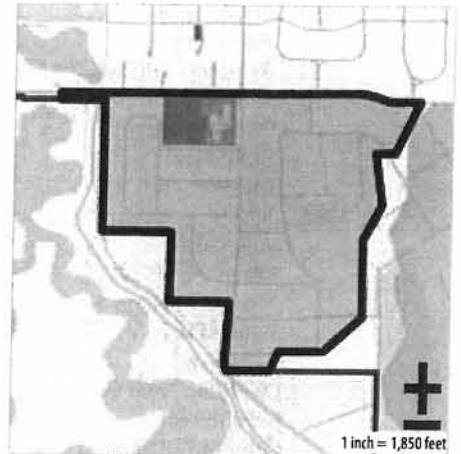
- water
- electrical
- none

Notes: Along perimeter and near school.

Uses & Programs

Uses

- drop-in neighborhood
- regional
- recreation programming
- affiliate organizations



Planning Area	5
Service Area	.5 mi.
Pop. Served	837

ANALYSIS

West Park, located adjacent to West School on the far west side of the District serves approximately 837 people in Planning Area five. The park features a pony field and three tennis courts.

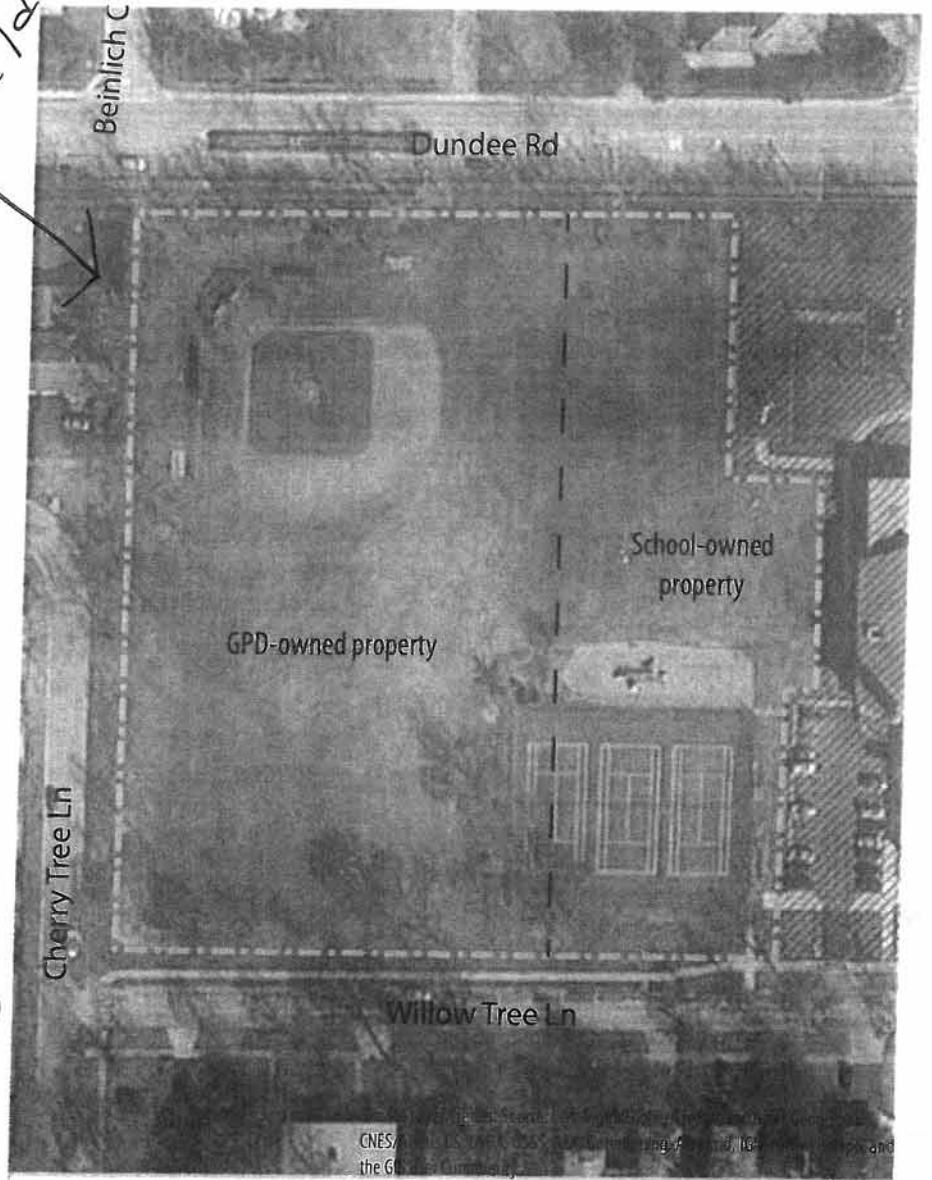
The tennis courts are in good condition; however, the baseball / softball field backstops and dugouts are in poor condition and are in need of replacement.

There is no internal trail system and the only accessible route to the tennis courts are from the parking lot on the southeast. There is a gate on the northwest side of the tennis courts, but no accessible connection to the gate.

AMENITIES

QTY	Year	
		Trails-Multi-Use (miles)
		Restrooms
		Picnic Shelter
1		Picnic Area
1	1991	Playground
		Basketball
1	1985	Baseball / Softball
	1990	Backstop
		Disc Golf (holes)
		Skate Park
		Soccer
3	1994	Tennis
		Volleyball
		Beach
		Boating / Sailing
		Swimming
		Splash Pad
1		On-Street Parking
		Parking Lot
		Interpretive Elements
		Park Signage
		Stormwater Retention
		Wetland
		Natural Area, Gardens

Ball field

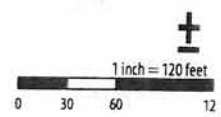


Improvements coming 2017 TO Playgrounds

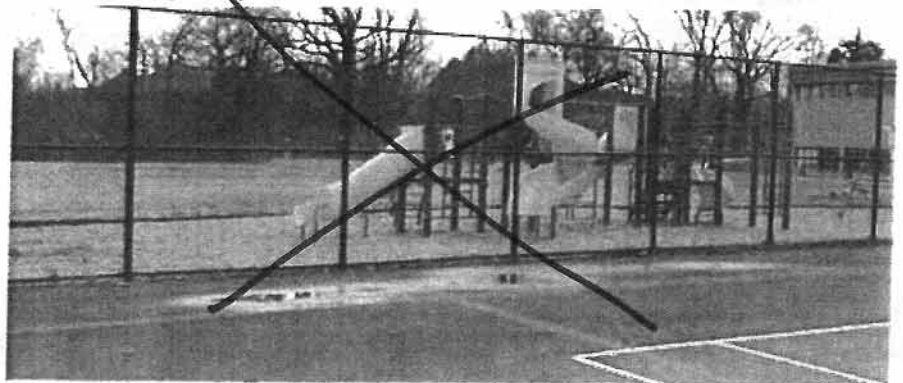
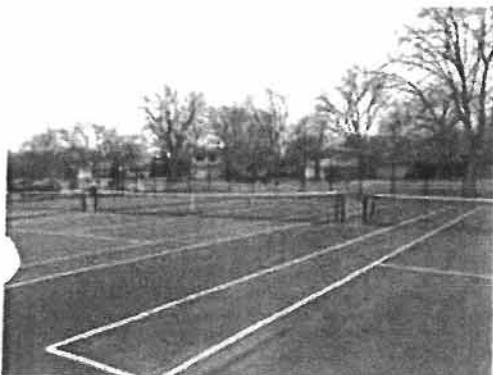


Legend

- Glencoe Park District Park
- Glencoe Park District
- School
- Water
- A Flood Zone
- AE Flood Zone



Aerial Photography



Woodlawn Park

Woodlawn Avenue & Green Bay Road Glencoe, Illinois 60022

Classification	Mir.
Year Acquired	01/01/1929
Acres	1.30
Tax Number	1909281040100000

INVENTORY

Context

Adjacent Land Use

- residential
- commercial / office
- institutional
- industrial
- open space

Street Classification

- arterial
- collector
- local
- alley

Notes: Park is located along Green Bay Road.

Pedestrian Connectivity

- sidewalk connections
- local trail connection
- regional trail connection
- none

Notes: Perimeter sidewalk present, no connections.

Natural Features

Hydrological Conditions

- floodplain / floodway
- wetland(s)
- open water
- none

Topographical Characteristics

- minimal
- moderate
- severe

Vegetation

- turf
- deciduous trees
- evergreen trees
- ornamental planting
- native plantings

Notes: Heavy tree cover.

Site Characteristics

Playground Elements

- modular structure
- independent play elements
- swings
- none

Notes: Modular structure for 2-12 years. Two tot and two belt swings along with a spinner, spring rocker, and sand play area.

Sports Fields

- pony
- mustang
- bronco
- none / other

Trails

- asphalt
- concrete
- other
- none

Notes: No internal trail system. No accessible route. Playground has curb cut / ramp for access but no connection pathway.

Site Amenities

- picnic tables
- benches
- lighting
- trash receptacles
- drinking fountain

Notes: Swing bench present.

Utilities

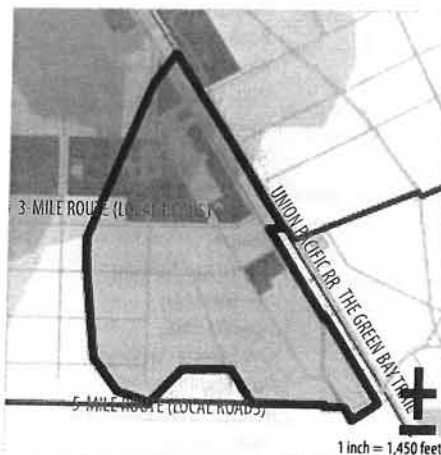
- water
- electrical
- none

Notes: Electrical along perimeter. Water through site to drinking fountain.

Uses & Programs

Uses

- drop-in neighborhood
- regional
- recreation programming
- affiliate organizations



Planning Area	5
Service Area	.25 mi.
Pop. Served	535

ANALYSIS

Located on the southernmost side of the District, Woodlawn Park features a 2-12 year age group playground with spinners, spring rockers, and a sand play area. The engineered wood fiber is contained by a concrete curb and while there is no accessible route through the park to the playground area, a curb cut and ramp in the playground is present.

The park has heavy tree cover, presumably offering good shade during the summer months. At 1.3 acres, there is enough room for additional amenities, and the park seems underdeveloped. Picnic areas are present, but do not include concrete pad or accessible paths. In fact, there is no internal trail that connects any of the amenities. Park signage is not present.

AMENITIES

QTY	Year	
		Trails-Multi-Use (miles)
		Restrooms
		Picnic Shelter
1		Picnic Area
1	2003	Playground
		Basketball
		Baseball / Softball
		Disc Golf (holes)
		Skate Park
		Soccer
		Tennis
		Volleyball
		Beach
		Boating / Sailing
		Swimming
		Splash Pad
		On-Street Parking
		Parking Lot
		Interpretive Elements
		Park Signage
		Stormwater Retention
		Wetland
		Natural Area, Gardens



Shelton Park

251 Harbor Street Glencoe, Illinois 60022

INVENTORY

Context

Adjacent Land Use

- residential
- commercial / office
- institutional
- industrial
- open space

Street Classification

- arterial
- collector
- local
- alley

Pedestrian Connectivity

- sidewalk connections
- local trail connection
- regional trail connection
- none

Notes: Immediately adjacent to the Old Green Bay Trail. Connections through park are present.

Natural Features

Hydrological Conditions

- floodplain / floodway
- wetland(s)
- open water
- none

Topographical Characteristics

- minimal
- moderate
- severe

Vegetation

- turf
- deciduous trees
- evergreen trees
- ornamental planting
- native plantings

Notes: Ornamental planting present along road, near tennis courts, and by playground. Heavy tree cover.

Site Characteristics

Playground Elements

- modular structure
- independent play elements
- swings
- none

Notes: Playground features a 2-12 year modular structure, four belt and two tot swings, spinners, spring rockers, and a sand play area.

Sports Fields

- pony
- mustang
- bronco
- none / other

Notes: Tennis courts

Trails

- asphalt
- concrete
- other
- none

Notes: Internal looping trail system is present near playground.

Site Amenities

- picnic tables (2005)
- benches (1995, 2005)
- lighting
- trash receptacles (2005)
- drinking fountain (1990)

Notes: Site amenities present. Accessible routes to seating areas present. Picnic shelter also present.

Utilities

- water
- electrical
- none

Notes: Drinking fountain

Uses & Programs

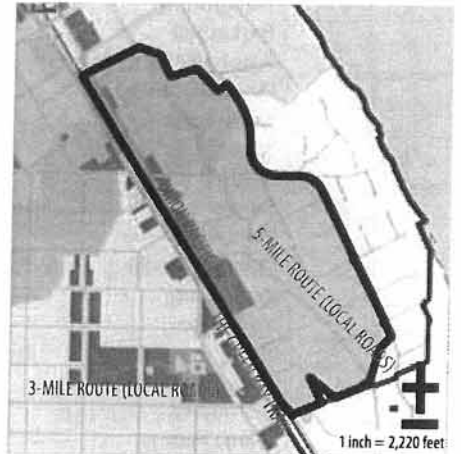
Uses

- drop-in neighborhood
- regional
- recreation programming
- affiliate organizations

Notes: Green Bay Trail Users

Classification
Year Acquired
Acres
Tax Number

Neighborhood Park
01/01/1920
7.90
1909281040100000



Planning Area 6
Service Area .5 mi.
Pop. Served 708

ANALYSIS

One of the few parks in the Park District that has been master planned, Shelton Park features tennis courts, a shelter, a playground and connections to the Green Bay Trail System. Upon receiving an OSLAD grant in 2005, the Park District constructed all improvements, most of which are in fairly good condition. Shelton Park is also one of the few parks in the District that has park signage.

* While most of the park is well-planned and well-developed, the southwest portion of the site lacks improvements and has the opportunity to become much more than what it currently is. A park pathway cuts straight through the site, as does the Green Bay Trail, but the circulation does not allow for a walking loop that would keep a passive recreation participant inside, utilizing the park.

updated 2016 →

AMENITIES

QTY	Year	
.39	2005	Trails-Multi-Use (miles)
		Restrooms
1	2005	Picnic Shelter
1		Picnic Area
1	2005	Playground
		Basketball
		Baseball / Softball
		Disc Golf (holes)
		Skate Park
		Soccer
		Softball
2	2005	Tennis
		Volleyball
		Fishing (*dock)
		Ice Skating
		Sledding
		Beach
		Boating / Sailing
		Swimming
		Splash Pad
		On-Street Parking
1		Parking Lot
		Interpretive Elements
		Park Signage
		Stormwater Retention
		Wetland
1		Natural Area, Gardens



Lakefront Park

55 Hazel Avenue, Glencoe, Illinois 60022

Classification	Community Par.
Year Acquired	01/01/1928
Acres	3.50
Tax Number	05051010010000

INVENTORY

Context

Adjacent Land Use

- residential
- commercial / office
- institutional
- industrial
- open space

Notes: Park is connected to Glencoe Beach.

Street Classification

- arterial
- collector
- local
- alley

Pedestrian Connectivity

- sidewalk connections
- local trail connection
- regional trail connection
- none

Natural Features

Hydrological Conditions

- floodplain / floodway
- wetland(s)
- open water
- none

Notes: Near Glencoe Beach

Topographical Characteristics

- minimal
- moderate
- severe

Notes: Minimal topographic changes throughout site. Severe changes on northeast side of site between the park area and Glencoe Beach.

Vegetation

- turf
- deciduous trees
- evergreen trees
- ornamental planting
- native plantings

Site Characteristics

Playground Elements

- modular structure
- independent play
- swings
- none

Notes: Newer play structure - good condition. One tot, one belt swing present.

Sports Fields

- pony
- mustang
- bronco
- none / other

Notes: Three turf-surfaced tennis courts present. Tennis courts are atop a stormwater retention basin.

Trails

- asphalt
- concrete
- other
- none

Notes: Trail connection play area and tennis courts to overlook on southeast side through site.

Site Amenities

- picnic tables
- benches (1995)
- lighting
- trash receptacles
- drinking fountain (1991)

Utilities

- water
- electrical
- none

Notes: Drinking fountain.

Uses & Programs

Uses

- drop-in neighborhood
- regional
- recreation programming
- affiliate organizations

Notes: Regional visitors include those visiting Glencoe Beach in addition to Lakefront Park.



Planning Area	8
Service Area	1-3 mi.
Pop. Served	3, 676

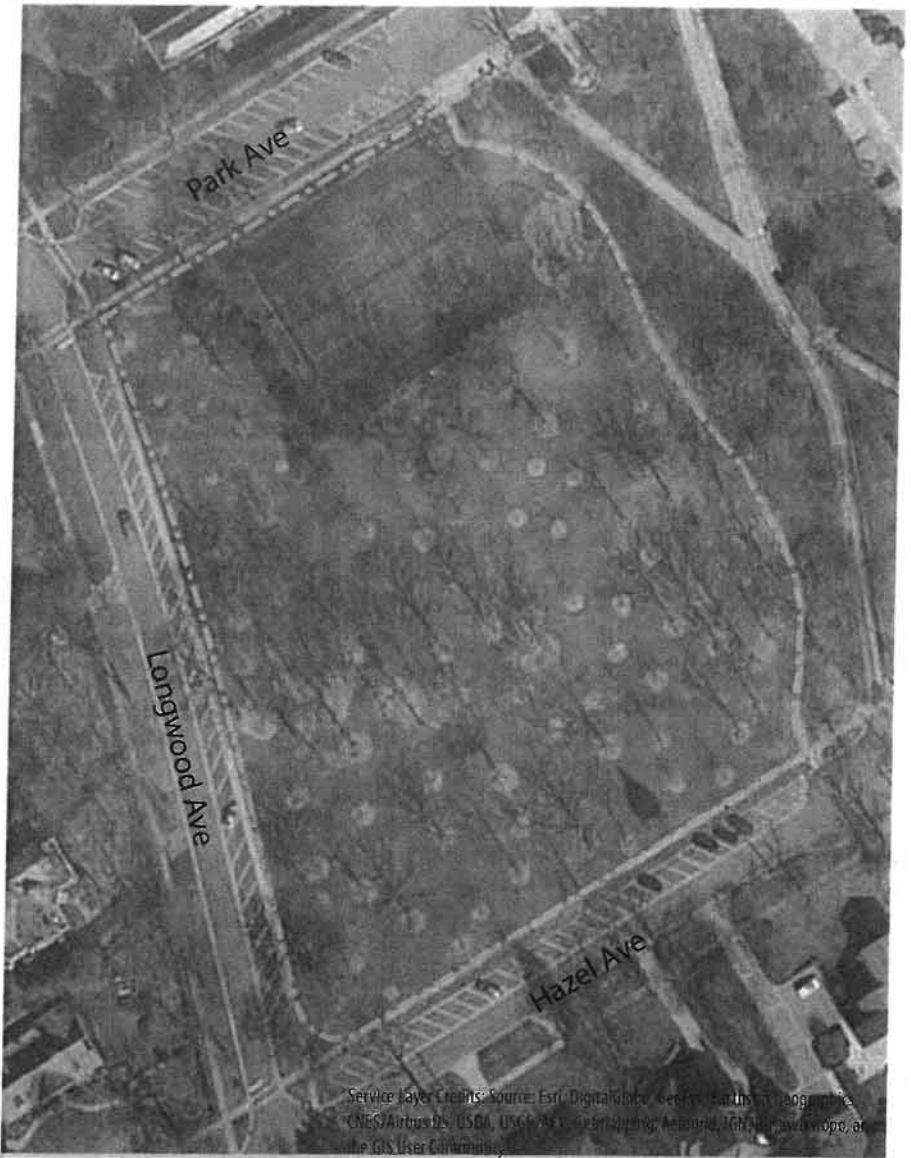
ANALYSIS

Adjacent to Glencoe Beach, Lakefront Park offers views to the beach and across Lake Michigan. The park includes a small play area with a TimberForm play structure and swings as well as three turf-surfaced tennis courts. All amenities are in fair to good condition. The playground has an accessible entry ramp and an accessible route to the play area.

The park also features interpretive elements included along the trail through the site. These elements are located at key points along the trail to encourage views to Lake Michigan. While the northwest side of the site is developed with active recreation amenities, the southwest and east sides are undeveloped and include only large deciduous trees. Trails, gathering spaces, and interpretive elements may be included to fully activate the site.

AMENITIES

QTY	Year	
.1	2001	Trails-Multi-Use (miles)
		Restrooms
		Picnic Shelter
1		Picnic Area
1	2012	Playground
		Basketball
		Baseball / Softball
		Disc Golf (holes)
		Skate Park
		Soccer
		Softball
3	2002	Tennis
		Volleyball
		Fishing (*dock)
		Ice Skating
		Sledding
		Beach
		Boating / Sailing
		Swimming
		Splash Pad
		On-Street Parking
		Parking Lot
1	2000	Interpretive Elements
1	2000	Park Signage
1	2002	Stormwater Retention
		Wetland
		Natural Area, Gardens



Beach Road & Old Green Bay Road

Beach Road & Old Green Bay Road Glencoe, Illinois 60022

Classification
Year Acquired
Acres
Tax Number

Special Use
01/01/1912
1.60
05064070120000
05072010010000
05072010020000

INVENTORY

Context

Adjacent Land Use

- residential
- commercial / office
- institutional
- industrial
- open space

Street Classification

- arterial
- collector
- local
- alley

Pedestrian Connectivity

- sidewalk connections
- local trail connection
- regional trail
- none

Natural Features

Hydrological Conditions

- floodplain / floodway
- wetland(s)
- open water
- none

Topographical Characteristics

- minimal
- moderate
- severe

Vegetation

- turf
- deciduous trees
- evergreen trees
- ornamental planting
- native plantings

Notes: Heavy tree cover.

Site Characteristics

Playground Elements

- modular structure
- independent play
- swings
- none

Sports Fields

- pony
- mustang
- bronco
- none / other

Trails

- asphalt
- concrete
- other
- none

Site Amenities

- picnic tables
- benches
- lighting
- trash receptacles
- drinking fountain

Notes: Benches present on site. No accessible route to them. Large sculpture serves as central feature on site.

Utilities

- water
- electrical
- none

Notes: Along perimeter

Uses & Programs

Uses

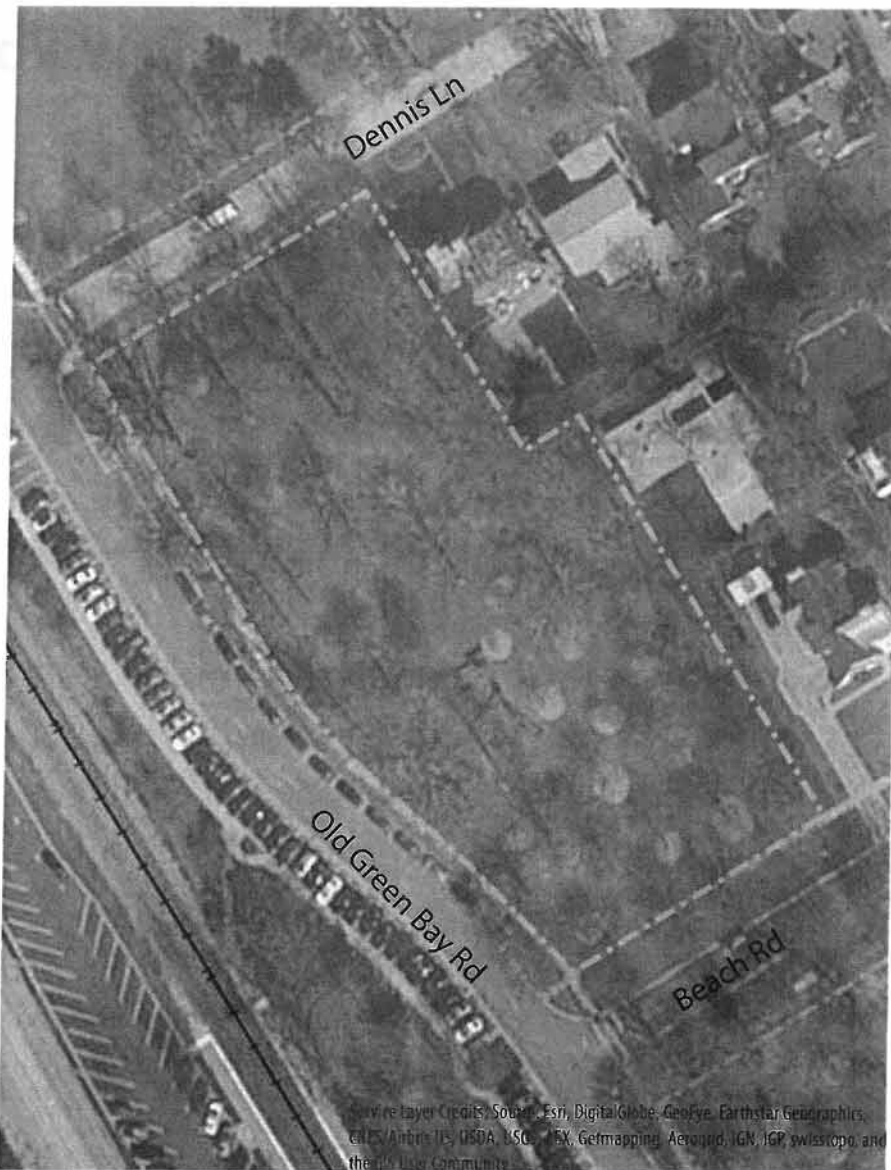
- drop-in neighborhood
- regional
- recreation programming
- affiliate organizations

AMENITIES

QTY	Year	
		Trails-Multi-Use (miles)
		Picnic Shelter
		Picnic Area
		Beach
		Boating / Sailing
		Swimming
		Splash Pad
		On-Street Parking
		Parking Lot
1		Interpretive Elements
		Park Signage
		Stormwater Retention
		Wetland
		Natural Area, Gardens

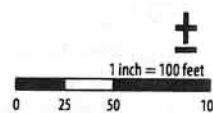
ANALYSIS

Beach Road and Old Green Bay Road features a large metal sculpture ("Breakwater") and heavy tree cover. The sculpture sits in a central location, highly visible from Old Green Bay Road and Park Avenue. While highly visible, the sculpture does not have any perimeter ornamental plantings or seating areas that would bring people to the site. Instead the sculpture is only visible from the road. No internal trail connections exist within the site, but a sidewalk is present along the perimeter. This site is located amidst a string of open space along Old Green Bay Road. Incorporating a trail through this site, and through the adjacent open spaces, would create a greenway system along Old Green Bay Road and could encourage use.



Legend

- Glencoe Park District Park
- Glencoe Park District
- School
- Water
- A Flood Zone
- AE Flood Zone



Veterans Memorial Park

299 Park Avenue, Glencoe, Illinois 60022

Classification

Special Us

Year Acquired

01/01/1913

Acres

1.90

Tax Number

05072020010000

INVENTORY

Context

Adjacent Land Use

- residential
- commercial / office
- institutional
- industrial
- open space

Notes: Adjacent to a church and undeveloped open space.

Street Classification

- arterial
- collector
- local
- alley

Pedestrian Connectivity

- sidewalk connections
- local trail connection
- regional trail
- none

Natural Features

Hydrological Conditions

- floodplain / floodway
- wetland(s)
- open water
- none

Topographical Characteristics

- minimal
- moderate
- severe

Vegetation

- turf
- deciduous trees
- evergreen trees
- ornamental planting
- native plantings

Notes: Heavy tree cover. Ornamental plantings near memorial and flag pole.

Site Characteristics

Playground Elements

- modular structure
- independent play
- swings
- none

Sports Fields

- pony
- mustang
- bronco
- none / other

Trails

- asphalt
- concrete
- other
- none

Site Amenities

- picnic tables
- benches
- lighting
- trash receptacles
- drinking fountain

Utilities

- water
- electrical
- none

Notes: Along perimeter

Uses & Programs

Uses

- drop-in neighborhood
- regional
- recreation programming
- affiliate organizations

AMENITIES

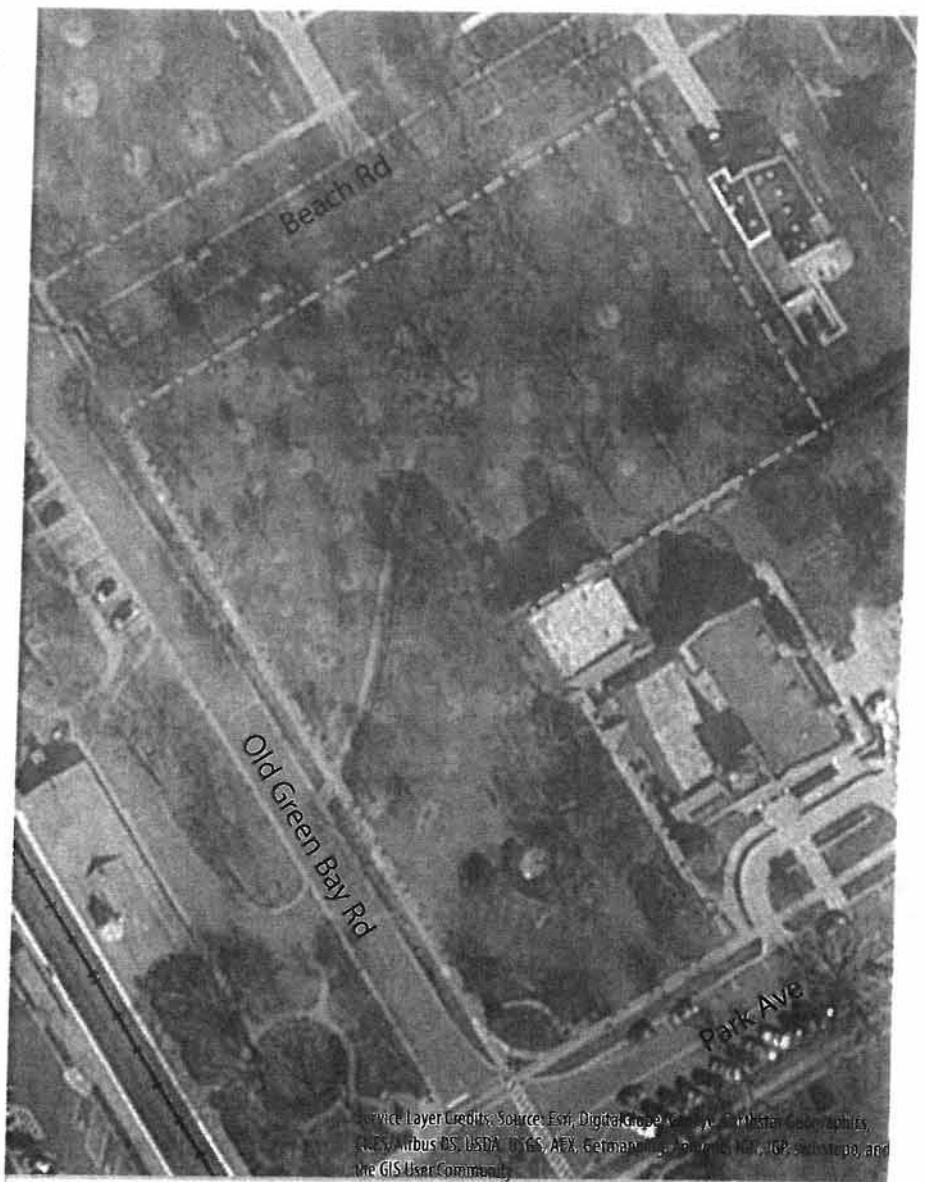
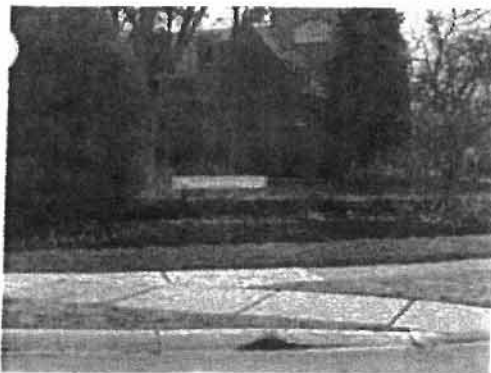
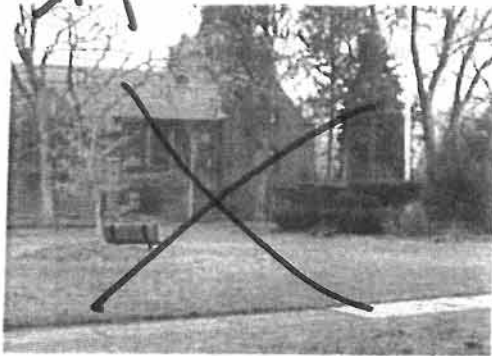
QTY	Year	
.1	1985	Trails-Multi-Use (miles)
		Picnic Shelter
1		Picnic Area
		Beach
		Boating / Sailing
		Swimming
		Splash Pad
1		On-Street Parking
		Parking Lot
1		Interpretive Elements
1	1999	Park Signage
		Stormwater Retention
		Wetland
1		Natural Area, Gardens

ANALYSIS

Veterans Memorial Park features a flag pole and limestone benches. The park also has a limestone entry wall with park signage situated behind it. Ornamental plantings are placed strategically throughout the site - around the flag pole area and by the entry wall. A narrow concrete path cuts through the site from southwest to northeast. No accessible connections to the flag pole are present.

This site is located along a string of open space that frames Old Green Bay Road. Most of the open space along the road is undeveloped or, if features do exist, is underdeveloped. Veterans Park is underdeveloped and underutilized as park space. Even though the park has a single use, and will most likely remain so, the addition of trails and other passive amenities would encourage more use and connect the site to the adjacent open space greenway.

Improved 2016

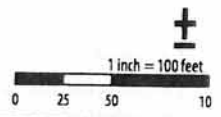


Legend

- Glencoe Park District Park
- Glencoe Park District
- School

Water

- A Flood Zone
- AE Flood Zone



Lincoln Drive & Green Bay Park

Lincoln Drive & Old Green Bay Road, Glencoe, Illinois 60022

INVENTORY

Context

Adjacent Land Use

- residential
- commercial / office
- institutional
- industrial
- open space

Street Classification

- arterial
- collector
- local
- alley

Pedestrian Connectivity

- sidewalk connections
- local trail connection
- regional trail connection
- none

Notes: Located along the Green Bay Trail, the park has access to local and regional trail connections.

Natural Features

Hydrological Conditions

- floodplain / floodway
- wetland(s)
- open water
- none

Notes: No wetlands or floodplain present, but the park does serve as stormwater detention.

Topographical Characteristics

- minimal
- moderate
- severe

Notes: Stormwater detention area creates moderate topographic changes.

Vegetation

- turf
- deciduous trees
- evergreen trees
- ornamental planting
- native plantings

Site Characteristics

Playground Elements

- modular structure
- independent play
- swings
- none

Notes: One belt, one tot, and one tire swing. Playground also includes a spring rocker. Engineered wood fiber surfacing is contained by a concrete curb.

Sports Fields

- pony
- mustang
- bronco
- none / other

Trails

- asphalt
- concrete
- other
- none

Notes: No accessible route or internal trail system.

Site Amenities

- picnic tables
- benches
- lighting
- trash receptacles
- drinking fountain

Notes: Swing bench present.

Utilities

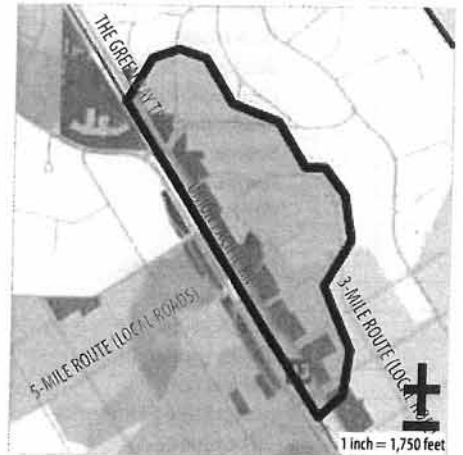
- water
- electrical
- none

Uses & Programs

Uses

- drop-in neighborhood
- regional
- recreation programming
- affiliate organizations

Classification	Mir.
Year Acquired	01/01/1915
Acres	3.00
Tax Number	1909281040100000



Planning Area	6
Service Area	.25 mi.
Pop. Served	462

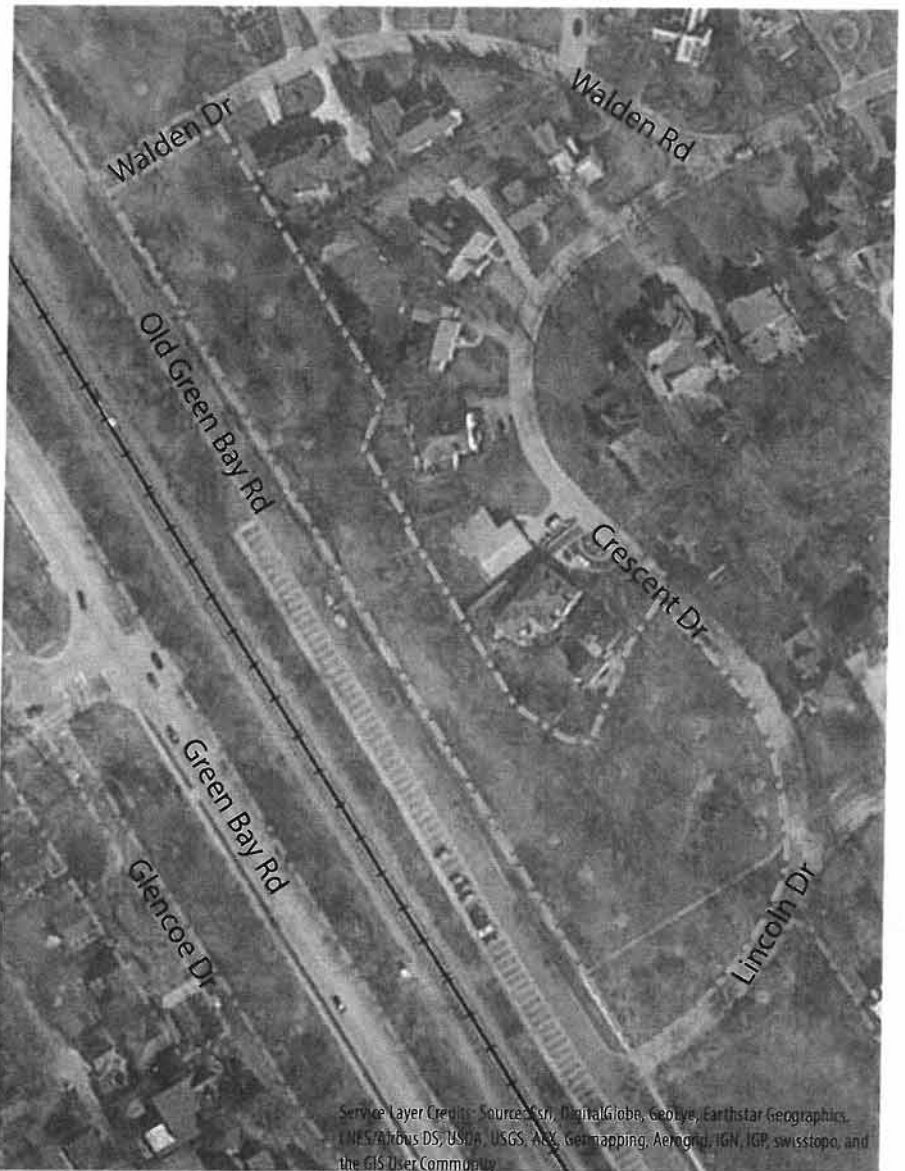
ANALYSIS

Lincoln Drive and Green Bay Park lies along Old Green Bay Road and Lincoln Drive. The park features a playground that, while built in 2002 (12 years old), is in fairly good condition. While a perimeter sidewalk is present around the site, there is no accessible route to the playground or picnic areas.

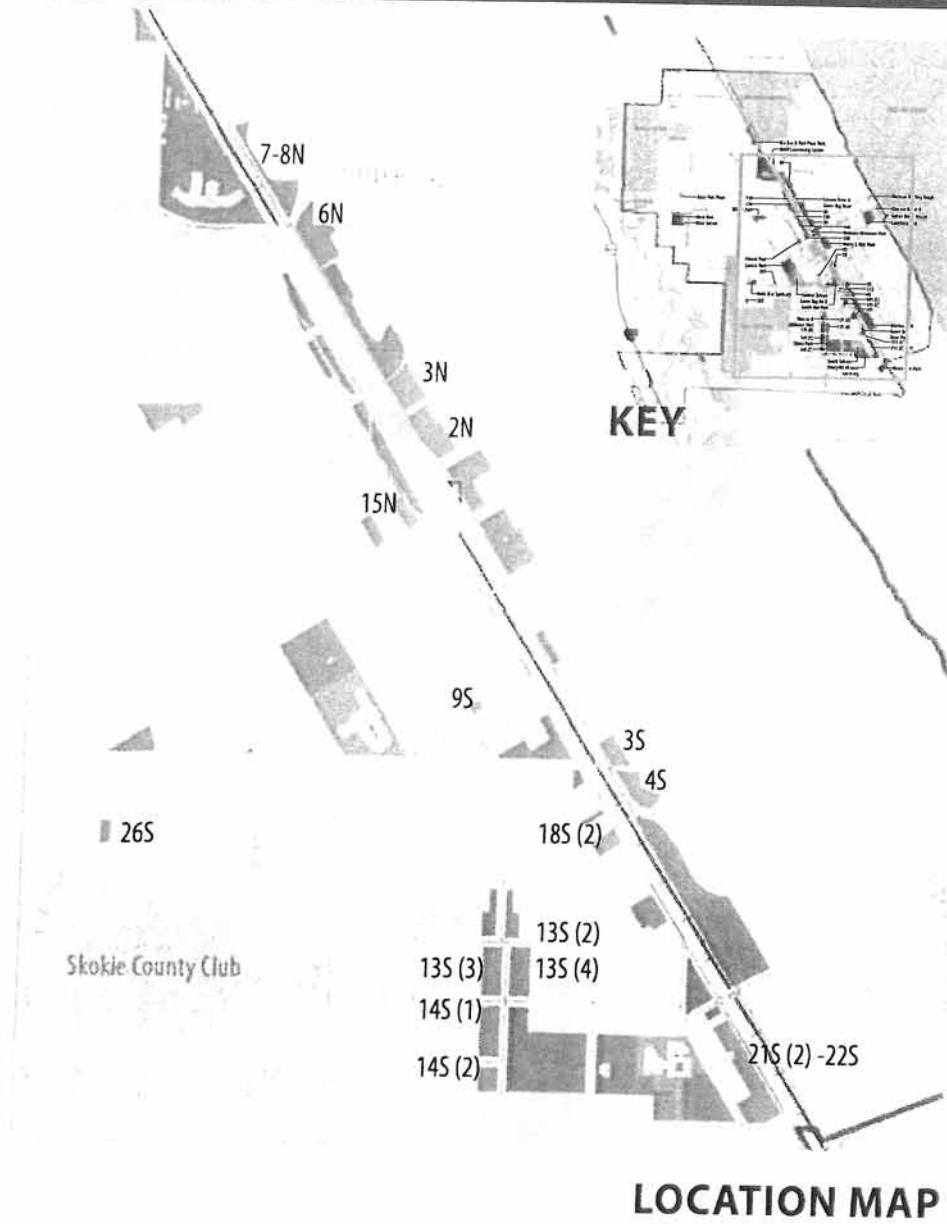
Along with the playground, the park features a detention area which assists the District and village in their stormwater management. Currently mostly turf, there is the opportunity to utilize native plantings in this area. Finally, a long strip of turf and trees along the northwest of the site is undeveloped. The park does not have signage, resulting in a lack of identity for the park. Not only would park signage help establish a clear identity for the park, but a distinct name - based on more than just the cross streets or location - would help do this as well.

AMENITIES

QTY	Year	
		Trails-Multi-Use (miles)
		Restrooms
		Picnic Shelter
1		Picnic Area
1	2002	Playground
		Basketball
		Baseball / Softball
		Disc Golf (holes)
		Skate Park
		Soccer
		Tennis
		Volleyball
		Beach
		Boating / Sailing
		Swimming
		Splash Pad
		On-Street Parking
	2002	Parking Lot
		Interpretive Elements
		Park Signage
		Stormwater Retention
		Wetland
1		Natural Area, Gardens



UNDEVELOPED OPEN SPACE



Green Bay Road Park
 Acres 1.10
 Tax Number 05083100130000



Park 13S (2-4)
 Acres 3.04
 Tax Number 05074130010000, 05074090150000, 05074120150000, 05074090010000



Park 14S (1-2)
 Acres 1.80
 Tax Number 05074160150000 05074200120000



Park 18S (2) (south parcel)
 Acres .56
 Tax Number 05074060330000



Everly Wildflower Sanctuary - West
 Acres 1.30
 Tax Number 05074220120000



Park 3N
 Acres 1.30
 Tax Number 05064060250000, 05064060260000



Park 26S
 Acres .27
 Tax Number 05073040270000

Skokie County Club

PARKWAYS



Green Bay Greenway (11N, 12N, 13N, 14N)

Acres 3.82
 Tax Number 05063090550000, 05063140300000,
 05063140260000, 05072000080000,
 05072000070000, 05072000470000,
 05072000460000, 05072000490000

✳ Located near downtown Glencoe along Green Bay Road, the site is a series of linear vegetated open space buffers.



Park 25S (island / median)

Acres .06
 Tax Number 05071130020000

On the far west side of the District, Park 25S is a small island located along South Avenue. Turf and trees present.



Park 11S (bus stop)

Acres .22
 Tax Number 05074020070000

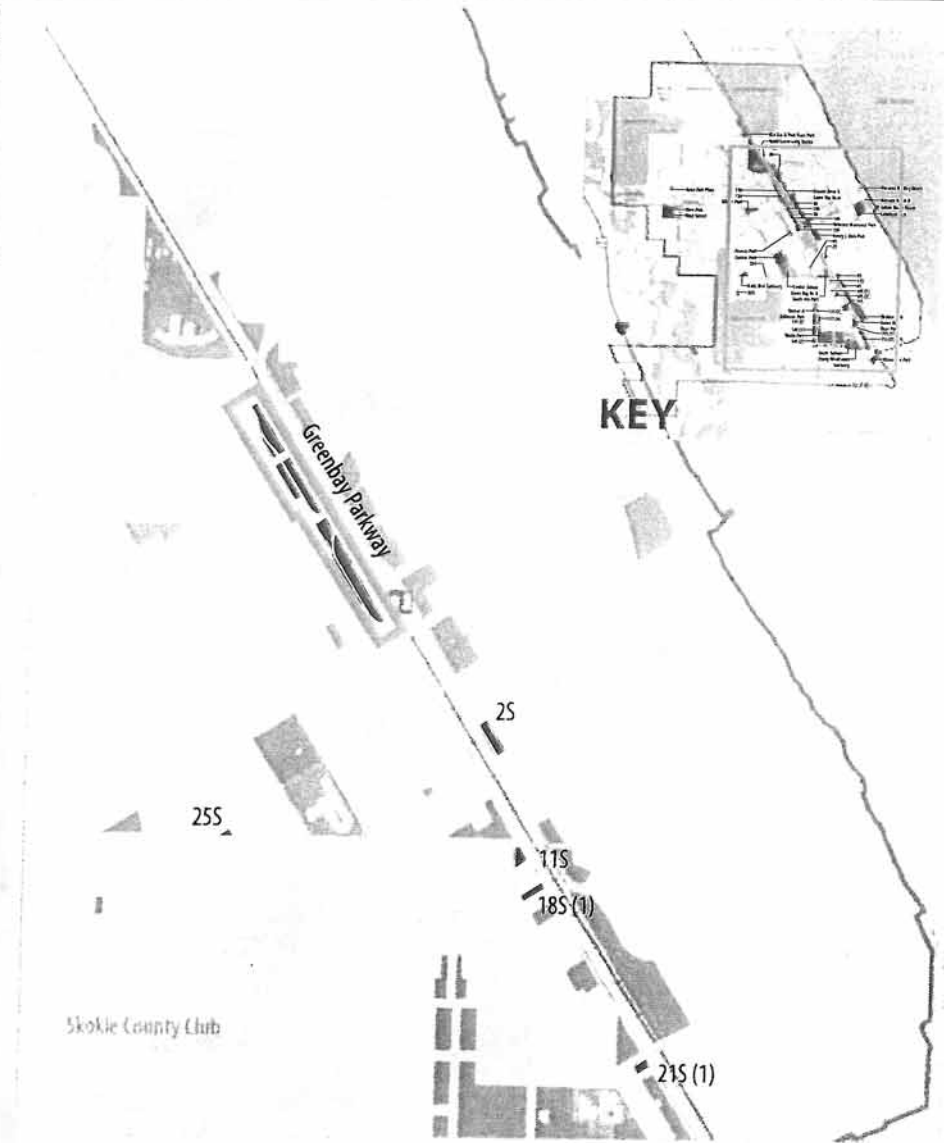
Park 11S is located along Green Bay Road at the corner of Green Bay Road and South Avenue.



Park 18S (bus stop)

Acres .22
 Tax Number 05074060290000

Located along the 213 Pace bus route, Park 18S contains a single bus shelter, turf, and trees.



LOCATION MAP



Park 21S (north parcel)

Acres .17
 Tax Number 05083110140000

A small undeveloped parcel of land at the corner of Green Bay Road and Harbor Street, Park 21S is vegetated by turf and deciduous trees.



✳ Park 2S

Acres .50
 Tax Number 05072130170000

Park 2S is a linear open space along Old Green Bay Road. It is a buffer between Old Green Bay Road and the residential area to the northeast.

UNDEVELOPED OPEN SPACE



Park 3S
 Acres .70
 Tax Number 05072170210000



Park 4S
 Acres 1.02
 Tax Number 05074030040000, 05074030010000



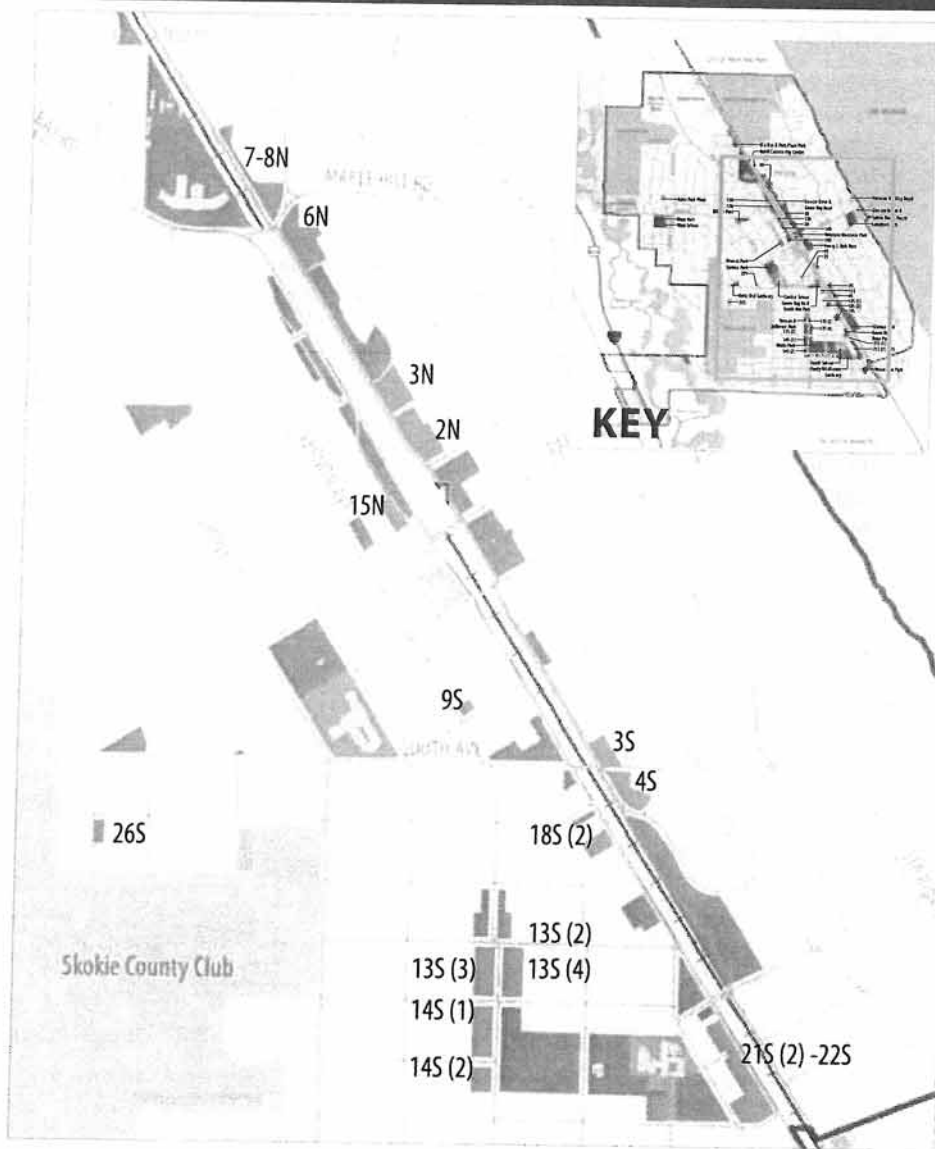
Park 6N
 Acres 1.75
 Tax Number 05064020300000, 05064020150000



Park 7-8N
 Acres 1.17
 Tax Number 05063020110000, 0506302010000, 05063020090000



Park 9S
 Acres .19
 Tax Number 05072120110000



LOCATION MAP



Park 21(2) - 22S
 Acres 2.69
 Tax Number 05083160170000, 05083110110000



Park 15N - WLC Park
 Acres 2.69
 Tax Number 05072000530000, 0507200520000

Takiff Community Center Park

999 Green Bay Road, Glencoe, Illinois 60022

Classification	Community Par.
Year Acquired	01/01/1985
Acres	11.60
Tax Number	05063000060000

INVENTORY

Context

Adjacent Land Use

- residential
- commercial / office
- institutional
- industrial
- open space

Street Classification

- arterial
- collector
- local
- alley

Pedestrian Connectivity

- sidewalk connections
- local trail connection
- regional trail connection
- none

Notes: Green Bay Trail is located on the opposite side of the railroad tracks from the park.

Natural Features

Hydrological Conditions

- floodplain / floodway
- wetland(s)
- open water
- none

Topographical Characteristics

- minimal
- moderate
- severe

Vegetation

- turf
- deciduous trees
- evergreen trees
- ornamental planting
- native plantings

Site Characteristics

Playground Elements

- modular structure
- independent play
- swings
- none

Notes: Preschool playground includes modular structures, springers and spinners, and swings.

Sports Fields

- pony
- mustang
- bronco
- none / other

Notes: Reisdorf Field and Skate Park.

Trails

- asphalt
- concrete
- other
- none

Notes: Paths do not loop around the site.

Site Amenities

- picnic tables
- benches
- lighting (sports)
- trash receptacles
- drinking fountain

Utilities

- water
- electrical
- none

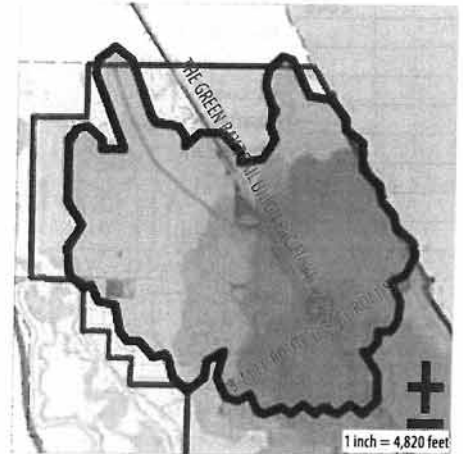
Notes: Sports lighting present. Electrical and water comes from building.

Uses & Programs

Uses

- drop-in neighborhood
- regional
- recreation programming
- affiliate organizations

Notes: Main baseball field. In-house and affiliate programming.



Planning Area	2
Service Area	1-3 mi.
Pop. Served	4,759

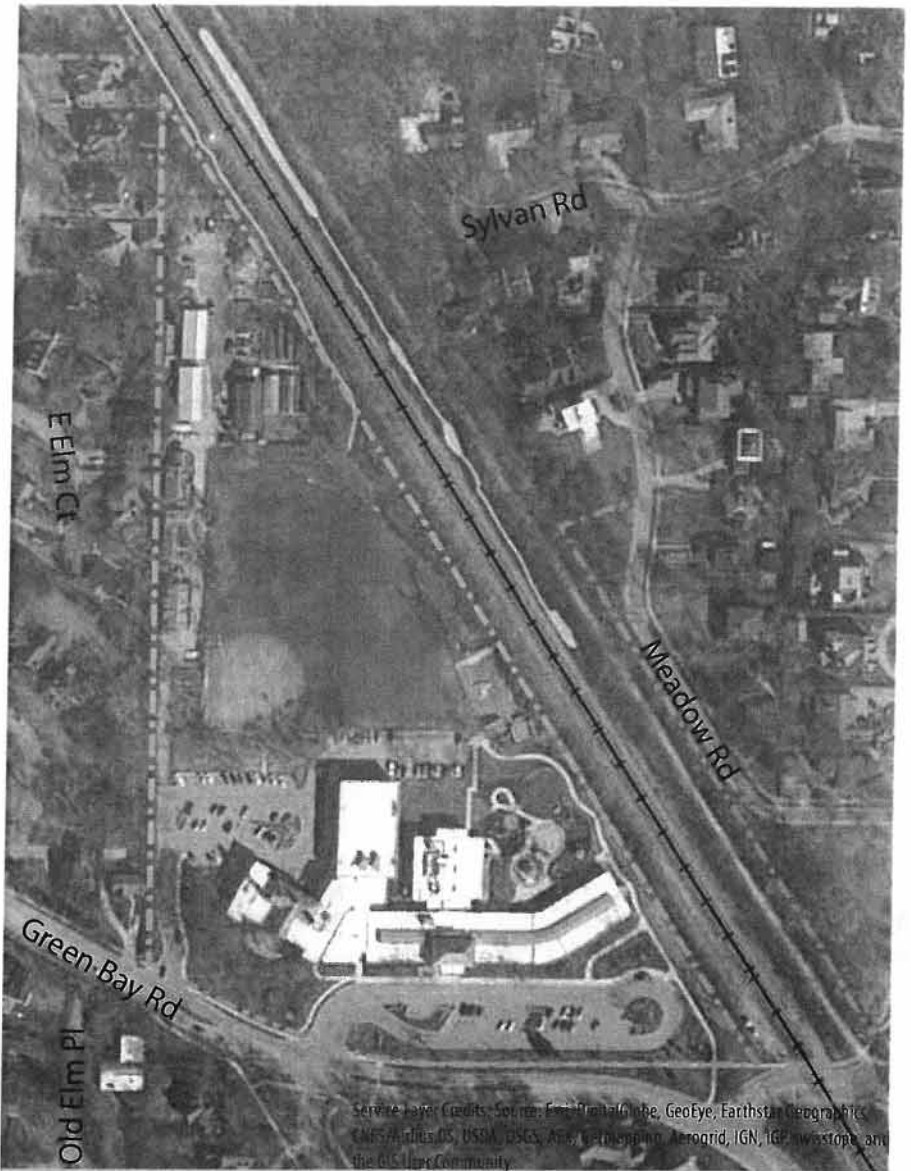
ANALYSIS

Takiff Community Center, located at Takiff Community Center Park, is the administrative and programming hub for the District. The park features Reisdorf Field, a skate park, and a soccer field. The site also includes a large 2-5 year playground for their preschool programming and all maintenance buildings.

Parking issues plague the site - there aren't enough spaces to accommodate indoor recreation programming, staff, and outdoor activities at the same time. Many times the lot is not large enough to even accommodate indoor programming and staff alone. While expanding the parking would be ideal, the site does not lend itself to the expansion. Already programmed with a large baseball field, playground, and skate park, the site needs an overall master planning study to determine the best location for additional parking.

AMENITIES

QTY	Year	
		Trails-Multi-Use (miles)
		Restrooms
1	1989	Picnic Shelter (shade sail)
1		Picnic Area
1	2009	Playground
		Basketball
1		Baseball / Softball
3	1980	Lighting
1	2006	Disc Golf (holes)
1	2005	Skate Park
1	2005	ramps
1	2004	ramp
1	2003	center ramp
1	2002	half pipe
1		Soccer
		Tennis
		Volleyball
		Ice Skating
		Sledding
		Beach
		Boating / Sailing
		Swimming
		Splash Pad
		On-Street Parking
1		Parking Lot
1		Interpretive Elements
1		Park Signage
		Stormwater Retention
		Wetland
		Natural Area, Gardens



Legend

- Glencoe Park District Park
- Water
- A Flood Zone
- Glencoe Park District
- AE Flood Zone
- School

1 inch = 260 feet
0 70 140 28

