

GLENCOE PARK DISTRICT

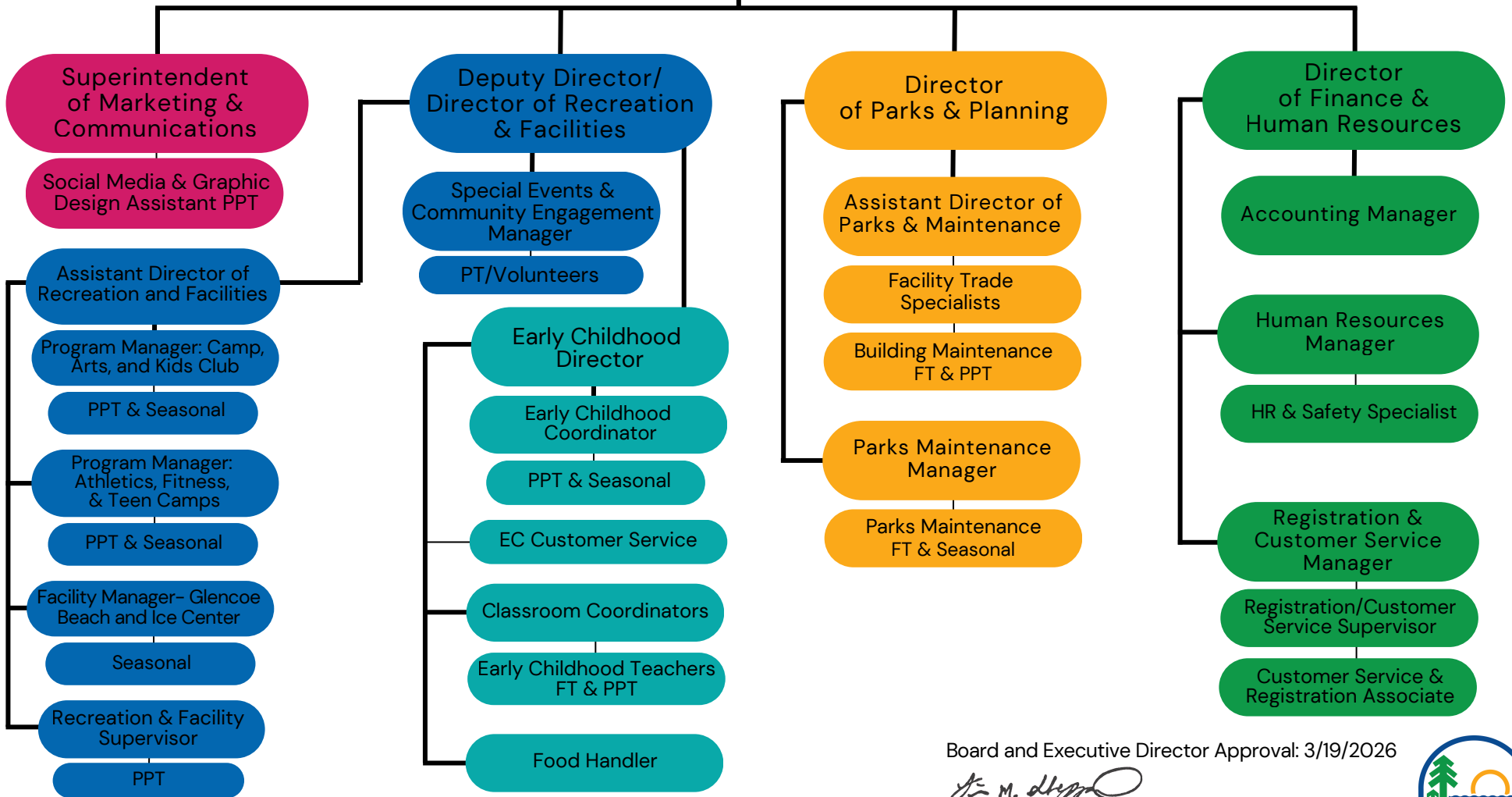
Organizational Chart

Board of Park Commissioners
 President- Michael Covey, Vice President- Nicole Reifman, Treasurer- Jackie Avitia-Guzman,
 Commissioner- Gary Hazan, Commissioner- Megan Cummins

EXECUTIVE DIRECTOR & BOARD SECRETARY
 Lisa Sheppard

General Attorney
 Ancel Glink

**Administrative Support/
 Special Projects Manager**



The decision to fill or not fill any position listed on the organization chart lies within the sole discretion of the Board of Park Commissioners and/or the Executive Director.

Board and Executive Director Approval: 3/19/2026

Lisa M. Sheppard

Lisa M. Sheppard, Executive Director

